

Bariatrix Nutrition

Product Catalog 2016

CONTENTS

2-9	Proti-15 cold drink mixes
10-14	Proti-15 liquid protein drink concentrates
15-17	Proti-15 hot drink mixes
18-23	Proti-15 soup mixes
24	Proti-Smoothie field berry smoothie
25-26	Proti-Max Anytime ready-to-serve shakes
27-33	Proti-Max smoothie shakers
34-44	Proti-bars
45-47	Proti-squares
48-49	Proti-Snax granola
50-51	Proti-snax soy snacks
52-53	Proti-snax zippers
57-58	Proti-max pudding / shake mixes
59-60	Proti-15 oatmeals
61	Proti-15 gelatin
62-64	VHP meal replacement drink mixes
65-66	Nutri-15 fast meal replacement soup mixes
67	Proti-Snax toast parisien
78-70	Proti-Meal® quick fix meal mixes
71-77	Proti-VLC smoothies
78-85	Proti-VLC bars
86 - 90	Proti-VLC soups
91-96	Proti-VLC pasta & flavor packs

Proti-15[®]

grapefruit drink mix

Nutrition Facts

Serving Size 1 packet (21 g)
Servings Per Container 7

Amount/Serving	
Calories 70	Calories from Fat 0
% Daily Value*	
Total Fat 0g	0%
Saturated Fat 0g	0%
Trans Fat 0g	
Cholesterol 0mg	0%
Sodium 0mg	0%
Potassium 50mg	1%
Total Carbohydrate 4g	1%
Dietary Fiber 2g	8%
Sugars 0g	
Protein 15g	
Vitamin A	0%
Vitamin C	0%
Calcium	0%
Iron	0%

* Percent Daily Values are based on a 2,000 calorie diet. Your daily values may be higher or lower depending on your calorie needs.

Ingredients: Hydrolyzed gelatin, fructooligosaccharide, citric acid, whey protein concentrate (**milk**), natural and artificial flavors, potassium citrate, fructose, silicon dioxide, sucralose (non-nutritive sweetener), guar gum, **soy** lecithin,

Manufactured in a facility that processes egg, wheat, peanuts and tree nuts.

DKP430

You won't want to wait until summer's heat to enjoy our delicious range of Proti-15[®] cold drinks. Available in a rainbow of fruit flavors, all have 15 grams of protein per serving and are guaranteed to refresh!

LOW FAT, LOW CHOLESTEROL

OTHER AVAILABLE FLAVORS: strawberry kiwi, orange, lemon, berry blast, peach mango, cranberry grape, pink lemonade

CASE PACK OUT: 40 display boxes per case and 7 packets per display box

SHELF LIFE: 36 months

DIRECTIONS: Empty contents of one pouch into a large glass. Add 6-8 fl. oz (180 to 240 ml) of cold water and stir until well dissolved.

Proti-15[®] is a Registered Trademark of Bariatrix Nutrition Inc., Lachine, QC, Canada H8T 1B7.



For more information on this or any of our innovative products, please contact one of our sales representatives. Bariatrix Nutrition Corp., 308 Industrial Park Road., Georgia, Vermont, 05454 | (800) 468-3438 | www.bariatrix.com

Proti-15[®]

strawberry kiwi drink mix

Nutrition Facts

Serving Size 1 packet (22g)
Servings Per Container 7

Amount/Serving	
Calories 70	Calories from Fat 0
% Daily Value*	
Total Fat 0g	0%
Saturated Fat 0g	0%
Trans Fat 0g	
Cholesterol 0mg	0%
Sodium 70mg	3%
Potassium 50mg	1%
Total Carbohydrate 5g	2%
Dietary Fiber 2g	8%
Sugars 1g	
Protein 15g	11%
Vitamin A	0%
Vitamin C	0%
Calcium	0%
Iron	0%

* Percent Daily Values are based on a 2,000 calorie diet. Your daily values may be higher or lower depending on your calorie needs.

Ingredients: Hydrolyzed gelatin, whey protein isolate (**milk**), fructooligosaccharide, citric acid, fructose, natural and artificial flavors, malic acid, potassium citrate, salt, color (beet juice powder, turmeric extract), silicon dioxide, sucralose (non-nutritive sweetener), **soy** lecithin.

Manufactured in a facility that processes egg, wheat, peanuts and tree nuts.

DKP436



You won't want to wait until summer's heat to enjoy our delicious range of Proti-15[®] cold drinks. Available in a rainbow of fruit flavors, all have 15 grams of protein per serving and are guaranteed to refresh!

GOOD SOURCE OF PROTEIN, FAT FREE, CHOLESTEROL FREE

OTHER AVAILABLE FLAVORS: grapefruit, orange, lemon, berry blast, peach mango, cranberry grape, pink lemonade

CASE PACK OUT: 40 display boxes per case and 7 packets per display box

SHELF LIFE: 36 months

DIRECTIONS: Empty contents of one pouch into a large glass. Add 6-8 fl. oz (180 to 240 ml) of cold water and stir until well dissolved.

Proti-15[®] is a Registered Trademark of Bariatrix Nutrition Inc., Lachine, QC, Canada H8T 1B7.



For more information on this or any of our innovative products, please contact one of our sales representatives. Bariatrix Nutrition Corp., 308 Industrial Park Road., Georgia, Vermont, 05454 | (800) 468-3438 | www.bariatrix.com

Proti-15[®]

orange drink mix

Nutrition Facts

Serving Size 1 packet (22g)
Servings Per Container 7

Amount/Serving

Calories 70 Calories from Fat 0

% Daily Value*

Total Fat 0g **0%**

Saturated Fat 0g **0%**

Trans Fat 0g

Cholesterol 10mg **3%**

Sodium 10mg **0%**

Potassium 50mg **1%**

Total Carbohydrate 5g **2%**

Dietary Fiber 2g **8%**

Sugars 1g

Protein 15g **9%**

Vitamin A 6%

Vitamin C 0%

Calcium 0%

Iron 0%

* Percent Daily Values are based on a 2,000 calorie diet. Your daily values may be higher or lower depending on your calorie needs.

Ingredients: Hydrolyzed gelatin, whey protein concentrate (**milk**), fructooligosaccharide, citric acid, natural flavors, orange juice solids, colors (turmeric extract, beet juice powder, beta-carotene), potassium citrate, silicon dioxide, **soy** lecithin, sucralose (non-nutritive sweetener).

Less than 1 % juice when reconstituted.

Manufactured in a facility that processes egg, wheat, peanuts and tree nuts.

DKP258



You won't want to wait until summer's heat to enjoy our delicious range of Proti-15[®] cold drinks.

Available in a rainbow of fruit flavors, all have 15 grams of protein per serving and are guaranteed to refresh!

GOOD SOURCE OF PROTEIN, LOW FAT, LOW CHOLESTEROL

OTHER AVAILABLE FLAVORS: grapefruit, strawberry kiwi, lemon, berry blast, peach mango, cranberry grape, pink lemonade

CASE PACK OUT: 40 display boxes per case and 7 packets per display box

SHELF LIFE: 36 months

DIRECTIONS: Empty contents of one pouch into a large glass. Add 8 fl. oz (180 to 240 ml) of cold water and stir until well dissolved.

Proti-15[®] is a Registered Trademark of Bariatrix Nutrition Inc., Lachine, QC, Canada H8T 1B7.



Bariatrix Nutrition

For more information on this or any of our innovative products, please contact one of our sales representatives.
Bariatrix Nutrition Corp., 308 Industrial Park Road., Georgia, Vermont, 05454 | (800) 468-3438 | www.bariatrix.com

Proti-15[®]

lemon drink mix

Nutrition Facts

Serving Size 1 packet (22g)
Servings Per Package 7

Amount/Serving

Calories 70 Calories from Fat 0

% Daily Value*

Total Fat 0g **0%**

Saturated Fat 0g **0%**

Trans Fat 0g

Cholesterol 10mg **3%**

Sodium 10mg **0%**

Potassium 75mg **2%**

Total Carbohydrate 5g **1%**

Dietary Fiber 2g **8%**

Sugars 0g

Protein 1 g **10%**

Vitamin A 0%

Vitamin C 0%

Calcium 2%

Iron 0%

* Percent Daily Values are based on a 2,000 calorie diet. Your daily values may be higher or lower depending on your calorie needs.

Ingredients: Hydrolyzed gelatin, whey protein concentrate (**milk**), fructooligosaccharide, citric acid, natural flavors, potassium citrate, malic acid, silicon dioxide, **soy** lecithin, sucralose (non-nutritive sweetener).

Manufactured in a facility that processes egg, wheat, sesame and tree nuts

DKP429

You won't want to wait until summer's heat to enjoy our delicious range of Proti-15[®] cold drinks. Available in a rainbow of fruit flavors, all have 15 grams of protein per serving and are guaranteed to refresh!

GOOD SOURCE OF PROTEIN, LOW FAT, LOW CHOLESTEROL

OTHER AVAILABLE FLAVORS: grapefruit, strawberry kiwi, orange, berry blast, peach mango, cranberry grape, pink lemonade

CASE PACK OUT: 40 display boxes per case and 7 packets per display box

SHELF LIFE: 36 months

DIRECTIONS: Empty contents of one pouch into a large glass. Add 6-8 fl. oz (180 to 240 ml) of cold water and stir until well dissolved.

Proti-15[®] is a Registered Trademark of Bariatrix Nutrition Inc., Lachine, QC, Canada H8T 1B7.



Bariatrix Nutrition

For more information on this or any of our innovative products, please contact one of our sales representatives. Bariatrix Nutrition Corp., 308 Industrial Park Road., Georgia, Vermont, 05454 | (800) 468-3438 | www.bariatrix.com

Proti-15[®]

berry blast drink mix

Nutrition Facts

Serving Size 1 packet (22g)
Servings Per Container 7

Amount/Serving	
Calories 70	Calories from Fat 0
% Daily Value*	
Total Fat 0g	0%
Saturated Fat 0g	0%
Trans Fat 0g	
Cholesterol 0mg	0%
Sodium 40mg	2%
Potassium 50mg	1%
Total Carbohydrate 5g	2%
Dietary Fiber 2g	8%
Sugars 0g	
Protein 15g	10%
Vitamin A	0%
Vitamin C	0%
Calcium	0%
Iron	0%

* Percent Daily Values are based on a 2,000 calorie diet. Your daily values may be higher or lower depending on your calorie needs.

Ingredients: Hydrolyzed gelatin, whey protein isolate (**milk**), fructooligosaccharide, citric acid, color (beet juice powder, turmeric extract, beta-carotene), natural flavors, potassium citrate, malic acid, silicon dioxide, sucralose (non-nutritive sweetener), **soy** lecithin.

Manufactured in a facility that processes egg, wheat, peanuts and tree nuts.

DKP426



You won't want to wait until summer's heat to enjoy our delicious range of Proti-15[®] cold drinks. Available in a rainbow of fruit flavors, all have 15 grams of protein per serving and are guaranteed to refresh!

GOOD SOURCE OF PROTEIN, FAT FREE, CHOLESTEROL FREE

OTHER AVAILABLE FLAVORS: grapefruit, strawberry kiwi, orange, lemon, peach mango, cranberry grape, pink lemonade

CASE PACK OUT: 40 display boxes per case and 7 packets per display box

SHELF LIFE: 36 months

DIRECTIONS: Empty contents of one pouch into a large glass. Add 6-8 fl. oz (180 to 240 ml) of cold water and stir until well dissolved.

Proti-15[®] is a Registered Trademark of Bariatrix Nutrition Inc., Lachine, QC, Canada H8T 1B7.



For more information on this or any of our innovative products, please contact one of our sales representatives. Bariatrix Nutrition Corp., 308 Industrial Park Road., Georgia, Vermont, 05454 | (800) 468-3438 | www.bariatrix.com

Proti-15[®]

peach mango drink mix

Nutrition Facts

Serving Size 1 packet (21.5g)
Servings Per Container 7

Amount/Serving

Calories 70 **Calories from Fat** 0

% Daily Value*

Total Fat 0g **0%**

Saturated Fat 0g **0%**

Trans Fat 0g

Cholesterol 10mg **3%**

Sodium 10mg **1%**

Potassium 65mg **2%**

Total Carbohydrate 4g **1%**

Dietary Fiber 2g **8%**

Sugars 0g

Protein 15g **9%**

Vitamin A 20%

Vitamin C 0%

Calcium 0%

Iron 0%

* Percent Daily Values are based on a 2,000 calorie diet. Your daily values may be higher or lower depending on your calorie needs:

Ingredients: Hydrolyzed gelatin, whey protein concentrate (**milk**), fructooligosaccharide, citric acid, malic acid, natural and artificial flavors, color (betacarotene, turmeric extract, beet juice powder), potassium citrate, silicon dioxide, **soy** lecithin, sucralose (non-nutritive sweetener).

Manufactured in a facility that processes egg, wheat, peanuts and tree nuts.

DKP428

You won't want to wait until summer's heat to enjoy our delicious range of Proti-15[®] cold drinks. Available in a rainbow of fruit flavors, all have 15 grams of protein per serving and are guaranteed to refresh!

GOOD SOURCE OF PROTEIN, EXCELLENT SOURCE OF VITAMIN A, LOW CHOLESTEROL, FAT FREE

OTHER AVAILABLE FLAVORS: grapefruit, strawberry kiwi, orange, lemon, berry blast, cranberry grape, pink lemonade

CASE PACK OUT: 40 display boxes per case and 7 packets per display box

SHELF LIFE: 36 months

DIRECTIONS: Empty contents of one pouch into a large glass. Add 6-8 fl. oz (180 to 240 ml) of cold water and stir until well dissolved.

Proti-15[®] is a Registered Trademark of Bariatrix Nutrition Inc., Lachine, QC, Canada H8T 1B7.



Bariatrix Nutrition

For more information on this or any of our innovative products, please contact one of our sales representatives. Bariatrix Nutrition Corp., 308 Industrial Park Road., Georgia, Vermont, 05454 | (800) 468-3438 | www.bariatrix.com

Proti-15[®]

cranberry grape drink mix

Nutrition Facts

Serving Size 1 packet (21g)
Servings Per Container 7

Amount/Serving

Calories 70 Calories from Fat 0

% Daily Value*

Total Fat 0g **0%**

Saturated Fat 0g **0%**

Trans Fat 0g

Cholesterol 0mg **0%**

Sodium 40mg **2%**

Potassium 180mg **5%**

Total Carbohydrate 4g **1%**

Dietary Fiber 2g **8%**

Sugars 0g

Protein 15g **11%**

Vitamin A 0%

Vitamin C 0%

Calcium 0%

Iron 0%

* Percent Daily Values are based on a 2,000 calorie diet. Your daily values may be higher or lower depending on your calorie needs.

Ingredients: Hydrolyzed gelatin, whey protein concentrate (milk), fructooligosaccharide, citric acid, tartaric acid, natural and artificial flavors, potassium citrate, silicon dioxide, color (beet juice powder, caramel, grape skin extract), sucralose (non-nutritive sweetener), soy lecithin.

Manufactured in a facility that processes egg, wheat, peanuts and tree nuts.

DKP431

You won't want to wait until summer's heat to enjoy our delicious range of Proti-15[®] cold drinks. Available in a rainbow of fruit flavors, all have 15 grams of protein per serving and are guaranteed to refresh!

GOOD SOURCE OF PROTEIN, EXCELLENT SOURCE OF VITAMIN A, LOW CHOLESTEROL, FAT FREE

OTHER AVAILABLE FLAVORS: grapefruit, strawberry kiwi, orange, lemon, berry blast, peach mango, pink lemonade

CASE PACK OUT: 40 display boxes per case and 7 packets per display box

SHELF LIFE: 36 months

DIRECTIONS: Empty contents of one pouch into a large glass. Add 6-8 fl. oz (180 to 240 ml) of cold water and stir until well dissolved.

Proti-15[®] is a Registered Trademark of Bariatrix Nutrition Inc., Lachine, QC, Canada H8T 1B7.



For more information on this or any of our innovative products, please contact one of our sales representatives. Bariatrix Nutrition Corp., 308 Industrial Park Road., Georgia, Vermont, 05454 | (800) 468-3438 | www.bariatrix.com

Proti-15[®]

pink lemonade

Nutrition Facts

Serving Size 1 packet (22g)
Servings Per Container 7

Amount/Serving	
Calories 70	Calories from Fat 0
% Daily Value*	
Total Fat 0g	0%
Saturated Fat 0g	0%
Trans Fat 0g	
Cholesterol 10mg	3%
Sodium 10mg	0%
Potassium 70mg	2%
Total Carbohydrate 4g	1%
Dietary Fiber 2g	8%
Sugars 0g	
Protein 15g	10%
Vitamin A	0%
Vitamin C	0%
Calcium	0%
Iron	0%

* Percent Daily Values are based on a 2,000 calorie diet. Your daily values may be higher or lower depending on your calorie needs.

Ingredients: Hydrolyzed gelatin, whey protein concentrate (**milk**), fructooligosaccharide, citric acid, natural flavors, potassium citrate, malic acid, beet juice powder (color), silicon dioxide, sucralose (non-nutritive sweetener), **soy** lecithin.

Manufactured in a facility that processes egg, wheat, peanuts and tree nuts.

DKP427

You won't want to wait until summer's heat to enjoy our delicious range of Proti-15[®] cold drinks. Available in a rainbow of fruit flavors, all have 15 grams of protein per serving and are guaranteed to refresh!

GOOD SOURCE OF PROTEIN, EXCELLENT SOURCE OF VITAMIN A, LOW CHOLESTEROL, FAT FREE

OTHER AVAILABLE FLAVORS: grapefruit, strawberry kiwi, orange, lemon, berry blast, peach mango, cranberry grape

CASE PACK OUT: 40 display boxes per case and 7 packets per display box

SHELF LIFE: 36 months

DIRECTIONS: Empty contents of one pouch into a large glass. Add 6-8 fl. oz (180 to 240 ml) of cold water and stir until well dissolved.

Proti-15[®] is a Registered Trademark of Bariatrix Nutrition Inc., Lachine, QC, Canada H8T 1B7.



For more information on this or any of our innovative products, please contact one of our sales representatives. Bariatrix Nutrition Corp., 308 Industrial Park Road., Georgia, Vermont, 05454 | (800) 468-3438 | www.bariatrix.com

Proti-15[®]

blue raspberry liquid protein drink concentrate

Nutrition Facts

Serving Size 1 packet (34mL)
Servings Per Container 7

Amount/Serving

Calories 70 **Calories from Fat** 0

% Daily Value*

Total Fat 0g **0%**

Saturated Fat 0g **0%**

Trans Fat 0g

Cholesterol 0mg **0%**

Sodium 15mg **1%**

Potassium 15mg **0%**

Total Carbohydrate 4g **1%**

Dietary Fiber 2g **8%**

Sugars 2g

Protein 15g

Vitamin A **0%**

Vitamin C **0%**

Calcium **4%**

Iron **0%**

* Percent Daily Values are based on a 2,000 calorie diet. Your daily values may be higher or lower depending on your calorie needs.

Ingredients: hydrolyzed gelatin, water, fructose, soluble fiber, citric acid, malic acid, natural and artificial flavors, sodium citrate, potassium sorbate, sodium benzoate, sucralose (non-nutritive sweetener), FD&C blue #1.

Manufactured in a facility that processes milk, egg, wheat, soy, peanuts and tree nuts.

G005



Add flavor and a protein boost to your water with our convenient new liquid protein concentrates. Available in 5 tasty fruit flavors, each handy single serving pouch adds new dimensions to plain old water and will mix easily without a spoon.

CONVENIENT, EASY TO MIX LIQUID FORMULATION

OTHER AVAILABLE FLAVORS: grape, green tea and cranberry, mixed berry, pomegranate

CASE PACK OUT: 36 display boxes per case and 7 packets per display box

SHELF LIFE: 12 months

DIRECTIONS: Empty contents of one packet into 5-10 OZ (150 - 300ml) of cold water, stir or shake and serve chilled.

Proti-15[®] is a Registered Trademark of Bariatrix Nutrition Inc., Lachine, QC, Canada H8T 1B7.

Proti-15[®]

grape liquid protein drink concentrate

Nutrition Facts

Serving Size 1 packet (34mL)
Servings Per Container 7

Amount/Serving

Calories 70 **Calories from Fat** 0

% Daily Value*

Total Fat 0g **0%**

Saturated Fat 0g **0%**

Trans Fat 0g

Cholesterol 0mg **0%**

Sodium 15mg **1%**

Potassium 15mg **0%**

Total Carbohydrate 4g **1%**

Dietary Fiber 2g **8%**

Sugars 2g

Protein 15g

Vitamin A **0%**

Vitamin C **0%**

Calcium **2%**

Iron **0%**

* Percent Daily Values are based on a 2,000 calorie diet. Your daily values may be higher or lower depending on your calorie needs.

Ingredients: hydrolyzed gelatin, water, fructose, soluble fiber, citric acid, malic acid, natural and artificial flavors, potassium sorbate, sodium benzoate, sucralose (non-nutritive sweetener), FD&C red #40, FD & C blue #1.

Manufactured in a facility that processes milk, egg, wheat, soy, peanuts and tree nuts.

G006

Add flavor and a protein boost to your water with our convenient new liquid protein concentrates. Available in 5 tasty fruit flavors, each handy single serving pouch adds new dimensions to plain old water and will mix easily without a spoon.

CONVENIENT, EASY TO MIX LIQUID FORMULATION

OTHER AVAILABLE FLAVORS: blue raspberry, green tea and cranberry, mixed berry, pomegranate

CASE PACK OUT: 36 display boxes per case and 7 packets per display box

SHELF LIFE: 12 months

DIRECTIONS: Empty contents of one packet into 5-10 OZ (150 - 300ml) of cold water, stir or shake and serve chilled.

Proti-15[®] is a Registered Trademark of Bariatrix Nutrition Inc., Lachine, QC, Canada H8T 1B7.

Proti-15[®]

green tea & cranberry liquid protein drink concentrate

Nutrition Facts

Serving Size 1 packet (34mL)
Servings Per Container 7

Amount/Serving

Calories 70 **Calories from Fat** 0

% Daily Value*

Total Fat 0g **0%**

Saturated Fat 0g **0%**

Trans Fat 0g

Cholesterol 0mg **0%**

Sodium 15mg **1%**

Potassium 15mg **0%**

Total Carbohydrate 4g **1%**

Dietary Fiber 2g **8%**

Sugars 2g

Protein 15g

Vitamin A **0%**

Vitamin C **0%**

Calcium **2%**

Iron **0%**

* Percent Daily Values are based on a 2,000 calorie diet. Your daily values may be higher or lower depending on your calorie needs.

Ingredients: hydrolyzed gelatin, water, fructose, soluble fiber, natural and artificial flavors, citric acid, malic acid, potassium sorbate, sodium benzoate, caramel color, sucralose (non-nutritive sweetener).

Manufactured in a facility that processes milk, egg, wheat, soy, peanuts and tree nuts.

G007



Add flavor and a protein boost to your water with our convenient new liquid protein concentrates. Available in 5 tasty fruit flavors, each handy single serving pouch adds new dimensions to plain old water and will mix easily without a spoon.

CONVENIENT, EASY TO MIX LIQUID FORMULATION

OTHER AVAILABLE FLAVORS: blue raspberry, grape, mixed berry, pomegranate

CASE PACK OUT: 36 display boxes per case and 7 packets per display box

SHELF LIFE: 12 months

DIRECTIONS: Empty contents of one packet into 5-10 OZ (150 - 300ml) of cold water, stir or shake and serve chilled.

Proti-15[®] is a Registered Trademark of Bariatrix Nutrition Inc., Lachine, QC, Canada H8T 1B7.

Proti-15[®]

mixed berry liquid protein drink concentrate

Nutrition Facts

Serving Size 1 packet (34mL)
Servings Per Container 7

Amount/Serving

Calories 70 Calories from Fat 0

% Daily Value*

Total Fat 0g **0%**

Saturated Fat 0g **0%**

Trans Fat 0g

Cholesterol 0mg **0%**

Sodium 15mg **1%**

Potassium 15mg **0%**

Total Carbohydrate 4g **1%**

Dietary Fiber 2g **8%**

Sugars 2g

Protein 15g

Vitamin A **0%**

Vitamin C **0%**

Calcium **2%**

Iron **0%**

* Percent Daily Values are based on a 2,000 calorie diet. Your daily values may be higher or lower depending on your calorie needs.

Ingredients: hydrolyzed gelatin, water, fructose, soluble fiber, citric acid, malic acid, natural and artificial flavors, sodium citrate, potassium sorbate, sodium benzoate, sucralose (non-nutritive sweetener), FD&C red #40.

Manufactured in a facility that processes milk, egg, wheat, soy, peanuts and tree nuts.

G008



Add flavor and a protein boost to your water with our convenient new liquid protein concentrates. Available in 5 tasty fruit flavors, each handy single serving pouch adds new dimensions to plain old water and will mix easily without a spoon.

CONVENIENT, EASY TO MIX LIQUID FORMULATION

OTHER AVAILABLE FLAVORS: blue raspberry, grape, green tea & cranberry, pomegranate

CASE PACK OUT: 36 display boxes per case and 7 packets per display box

SHELF LIFE: 12 months

DIRECTIONS: Empty contents of one packet into 5-10 OZ (150 - 300ml) of cold water, stir or shake and serve chilled.

Proti-15[®] is a Registered Trademark of Bariatrix Nutrition Inc., Lachine, QC, Canada H8T 1B7.

Proti-15[®]

pomegranate liquid protein drink concentrate

Nutrition Facts

Serving Size 1 packet (34mL)
Servings Per Container 7

Amount/Serving

Calories 70 **Calories from Fat** 0

% Daily Value*

Total Fat 0g **0%**

Saturated Fat 0g **0%**

Trans Fat 0g

Cholesterol 0mg **0%**

Sodium 15mg **1%**

Potassium 15mg **0%**

Total Carbohydrate 4g **1%**

Dietary Fiber 2g **8%**

Sugars 2g

Protein 15g

Vitamin A **0%**

Vitamin C **0%**

Calcium **2%**

Iron **0%**

* Percent Daily Values are based on a 2,000 calorie diet. Your daily values may be higher or lower depending on your calorie needs.

Ingredients: hydrolyzed gelatin, water, fructose, soluble fiber, citric acid, malic acid, natural and artificial flavors, sodium citrate, potassium sorbate, sodium benzoate, sucralose (non-nutritive sweetener), FD&C red #40.

Manufactured in a facility that processes milk, egg, wheat, soy, peanuts and tree nuts.

G009



Add flavor and a protein boost to your water with our convenient new liquid protein concentrates. Available in 5 tasty fruit flavors, each handy single serving pouch adds new dimensions to plain old water and will mix easily without a spoon.

CONVENIENT, EASY TO MIX LIQUID FORMULATION

OTHER AVAILABLE FLAVORS: blue raspberry, grape, green tea & cranberry, mixed berry

CASE PACK OUT: 36 display boxes per case and 7 packets per display box

SHELF LIFE: 12 months

DIRECTIONS: Empty contents of one packet into 5-10 OZ (150 - 300ml) of cold water, stir or shake and serve chilled.

Proti-15[®] is a Registered Trademark of Bariatrix Nutrition Inc., Lachine, QC, Canada H8T 1B7.

Proti-15[®]

hot chocolate drink mix

Nutrition Facts

Serving Size 1 packet (26g)
Servings Per Package 7

Amount/Serving

Calories 90 Calories from Fat 10

% Daily Value*

Total Fat 1g **2%**

Saturated Fat 0g **0%**

Trans Fat 0g

Cholesterol 0mg **0%**

Sodium 140mg **6%**

Potassium 170mg **5%**

Total Carbohydrate 6g **2%**

Dietary Fiber 2g **8%**

Sugars 1g

Protein 15g **27%**

Vitamin A 0%

Vitamin C 0%

Calcium 35%

Iron 6%

Percent Daily Values are based on a 2,000 calorie diet. Your daily values may be higher or lower depending on your calorie needs.

Ingredients: Protein blend (milk protein isolate, sodium caseinate), hydrolyzed gelatin, cocoa powder (processed with alkali), maltodextrin, natural and artificial flavors, polydextrose, sunflower oil, dextrose, fructose, salt, tricalcium phosphate, magnesium phosphate, malt extract (wheat), silicon dioxide, sucralose & acesulfame-potassium (non-nutritive sweeteners), xanthan gum, soy lecithin, guar gum, sodium alginate, mono-diglycerides, tocopherols.

Manufactured in a facility that processes egg, sesame, peanuts and tree nuts.

H063

Warm and comforting alternatives to a daily coffee habit or soothing and filling treats for blustery days, our hot drinks will satisfy your soul and your appetite. Try mixing the two for an extra special mocha indulgence! Only 90 calories of rich, creamy taste packed with 15g of protein in every serving.

GOOD SOURCE OF PROTEIN, EXCELLENT SOURCE OF CALCIUM

OTHER AVAILABLE FLAVORS: cappuccino

CASE PACK OUT: 40 display boxes per case and 7 packets per display box

SHELF LIFE: 36 months

DIRECTIONS: Pour contents of one packet into a cup. Add 200ml (6-7oz) of boiling water while stirring, stir until well dissolved.

Proti-15[®] is a Registered Trademark of Bariatrix Nutrition Inc., Lachine, QC, Canada H8T 1B7.

Proti-15[®]

cappuccino hot drink mix

Nutrition Facts

Serving Size 1 packet (24g)
Servings Per Container 7

Amount/Serving

Calories 90 Calories from Fat 10

% Daily Value*

Total Fat 1g **2%**

Saturated Fat 0g **0%**

Trans Fat 0g

Cholesterol 0mg **0%**

Sodium 65mg **3%**

Potassium 70mg **2%**

Total Carbohydrate 5g **2%**

Dietary Fiber 2g **8%**

Sugars 1g

Protein 15g **25%**

Vitamin A 0%

Vitamin C 0%

Calcium 10%

Iron 2%

Percent Daily Values are based on a 2,000 calorie diet. Your daily values may be higher or lower depending on your calorie needs.

Ingredients: Protein blend (calcium caseinate [milk], sodium caseinate), hydrolyzed gelatin, decaffeinated coffee powder, natural and artificial flavors (contain **wheat**), fructooligosaccharide, sunflower oil, maltodextrin, cocoa powder (processed with alkali), gelatin, guar gum, sodium alginate, xanthan gum, silicon dioxide, cinnamon, **soy** lecithin, mono-diglycerides, tocopherols, sucralose (non-nutritive sweetener).

Manufactured in a facility that processes egg, sesame, peanuts and tree nuts.

H321



Warm and comforting alternatives to a daily coffee habit or soothing and filling treats for blustery days, our hot drinks will satisfy your soul and your appetite. Try mixing the two for an extra special mocha indulgence! Only 90 calories of rich, creamy taste packed with 15g of protein in every serving.

GOOD SOURCE OF PROTEIN

OTHER AVAILABLE FLAVORS: hot chocolate

CASE PACK OUT: 40 display boxes per case and 7 packets per display box

SHELF LIFE: 36 months

DIRECTIONS: Pour contents of one packet into a cup. Add 200ml (6-7oz) of boiling water while stirring, stir until well dissolved.

Proti-15[®] is a Registered Trademark of Bariatrix Nutrition Inc., Lachine, QC, Canada H8T 1B7.



For more information on this or any of our innovative products, please contact one of our sales representatives. Bariatrix Nutrition Corp., 308 Industrial Park Road., Georgia, Vermont, 05454 | (800) 468-3438 | www.bariatrix.com

chocolate drink mix

Nutrition Facts

Serving Size 1 packet (34 g)
Servings Per Container 7

Amount/Serving

Calories 120 Calories from Fat 15

% Daily Value*

Total Fat 2 g	3%
Saturated Fat 1 g	5%
Trans Fat 0g	
Cholesterol 20 mg	7%
Sodium 180 mg	8%
Potassium 350 mg	10%
Total Carbohydrate 10 g	3%
Dietary Fiber 3 g	12%
Sugars 5 g	
Protein 18 g	36%
Vitamin A	0%
Vitamin C	0%
Calcium	30%
Iron	8%

* Percent Daily Values are based on a 2,000 calorie diet. Your daily values may be higher or lower depending on your calorie needs.

Ingredients: Protein blend (milk protein concentrate, whey protein concentrate), cocoa powder (processed with alkali), natural and artificial flavors, sea salt, xanthan gum, carrageenan, sucralose and acesulfame-potassium (non-nutritive sweeteners), silicon dioxide.

Manufactured in a facility that processes egg, soy, wheat, peanuts and tree nuts.

DKH064 - PD000990V01



Warm and comforting alternatives to a daily coffee habit or soothing and filling treats for blustery days, our hot drinks will satisfy your soul and your appetite. Or, if you're craving something cooler, this chocolate drink can be prepared as a cold drink as well.

EXCELLENT SOURCE OF PROTEIN, EXCELLENT SOURCE OF CALCIUM

CASE PACK OUT: 24 display boxes per case and 7 packets per display box

SHELF LIFE: 36 months

DIRECTIONS:

Cold drink preparation: mix contents of one packet with 6-8 oz (180-240ml) of very cold water. Stir until completely dissolved.

Hot drink preparation: Mix contents of one packet with 6-8 oz (180-240ml) of cold water. Stir until completely dissolved and heat for 1-2 minutes.

Proti-15[®]

cream of mushroom soup mix

Nutrition Facts

Serving Size 1 packet (24g)
Servings Per Container 7

Amount/Serving	
Calories 80	Calories from fat 5
% Daily Value*	
Total Fat 0.5g	1%
Saturated Fat 0g	0%
Trans Fat 0g	
Cholesterol Less than 5mg	<2%
Sodium 440mg	18%
Potassium 150mg	4%
Total Carbohydrate 5g	2%
Dietary Fiber 1g	4%
Sugars 0g	
Protein 15g	29%
Vitamin A	0%
Vitamin C	0%
Calcium	20%
Iron	6%

* Percent Daily Values are based on a 2,000 calorie diet. Your daily values may be higher or lower depending on your calorie needs.

Ingredients: Protein blend (milk protein concentrate, milk protein isolate, soy protein isolate, hydrolyzed gelatin, pea protein isolate), natural and artificial flavors, corn starch, dehydrated mushrooms, xanthan gum, guar gum, sodium alginate, hydrolyzed wheat protein, sodium carboxymethylcellulose, onion powder, potassium citrate, silicon dioxide, yeast extract (salt), colors (caramel, turmeric extract).

May contain eggs.

D110



For variety and versatility, our satisfying savory soups are hard to beat. All offer 15 grams of protein and several can also be used as sauces. A delicious option for a light meal and a real treat on cold days.

EXCELLENT SOURCE OF PROTEIN, EXCELLENT SOURCE OF CALCIUM, LOW-FAT, LOW-CHOLESTEROL

OTHER AVAILABLE FLAVORS: cream of chicken, chicken noodle, cream of celery, cream of vegetable, broc n' cheese, italian tomato

CASE PACK OUT: 40 display boxes per case and 7 packets per display box

SHELF LIFE: 36 months

DIRECTIONS: Empty contents of one packet into a bowl and add 190-220mL (6-7 oz) of boiling water while stirring continuously.

Proti-15[®] is a Registered Trademark of Bariatrix Nutrition Inc., Lachine, QC, Canada H8T 1B7.

Proti-15[®]

cream of chicken soup mix

Nutrition Facts

Serving Size 1 packet (24g)
Servings Per Container 7

Amount/Serving	
Calories 80	Calories from fat 5
% Daily Value*	
Total Fat 0g	0%
Saturated Fat 0g	0%
Trans Fat 0g	
Cholesterol Less than 5mg	<2%
Sodium 450mg	19%
Potassium 260mg	7%
Total Carbohydrate 4g	1%
Dietary Fiber 1g	4%
Sugars 0g	
Protein 15g	29%
Vitamin A	0%
Vitamin C	0%
Calcium	20%
Iron	4%

*Percent Daily Values are based on a 2,000 calorie diet. Your daily values may be higher or lower depending on your calorie needs.

Ingredients : Protein blend (**Milk** protein isolate, milk protein concentrate, gelatin hydrolysate, **soy** protein isolate, pea protein isolate), natural and artificial flavors (**eggs**), hydrolyzed **wheat** and corn proteins, onion powder, maltodextrin, disodium inosinate and guanylate, yeast extract (salt), potassium citrate, potassium bicarbonate, xanthan gum, guar gum, sodium alginate, carrageenan, silicon dioxide, color (turmeric), dehydrated parsley, garlic powder.

Manufactured in a facility that processes sesame and tree nuts.

D098



For variety and versatility, our satisfying savory soups are hard to beat. All offer 15 grams of protein and several can also be used as sauces. A delicious option for a light meal and a real treat on cold days.

EXCELLENT SOURCE OF PROTEIN, EXCELLENT SOURCE OF CALCIUM, FAT-FREE, LOW-CHOLESTEROL

OTHER AVAILABLE FLAVORS: cream of mushroom, chicken noodle, cream of celery, cream of vegetable, broc n' cheese, italian tomato

CASE PACK OUT: 40 display boxes per case and 7 packets per display box

SHELF LIFE: 36 months

DIRECTIONS: Empty contents of one packet into a bowl, add 190-220mL (6-7 oz) of boiling water while stirring continuously.

Proti-15[®] is a Registered Trademark of Bariatrix Nutrition Inc., Lachine, QC, Canada H8T 1B7.

Proti-15[®]

chicken noodle soup mix

Nutrition Facts

Serving Size 1 packet (24g)
Servings Per Container 7

Amount/Serving	
Calories 90	Calories from fat 0
% Daily Value*	
Total Fat 0g	0%
Saturated Fat 0g	0%
Trans Fat 0g	
Cholesterol 5mg	2%
Sodium 500mg	20%
Potassium 30mg	1%
Total Carbohydrate 5g	2%
Dietary Fiber 0g	0%
Sugars 0g	
Protein 15g	17%
Vitamin A	20%
Vitamin C	0%
Calcium	2%
Iron	2%

* Percent Daily Values are based on a 2,000 calorie diet. Your daily values may be higher or lower depending on your calorie needs.

Ingredients : Hydrolyzed gelatin, **egg** noodles (durum flour, water, egg yolks, niacin, ferrous sulfate, thiamine mononitrate, riboflavin, folic acid), sodium caseinate (derived from **milk**), whey protein isolate, hydrolyzed corn and **wheat gluten** (autolysed yeast extract, thiamine hydrochloride, lactic acid, disodium inosinate, disodium guanylate), natural and artificial flavors, dried carrots. Contains 2 percent or less of spice extracts, salt, parsley flakes, turmeric extract color, garlic powder, **soy** lecithin.

Manufactured in a facility that processes sesame and tree nuts.

D697



For variety and versatility, our satisfying savory soups are hard to beat. All offer 15 grams of protein and several can also be used as sauces. A delicious option for a light meal and a real treat on cold days.

GOOD SOURCE OF PROTEIN, FAT-FREE, CHOLESTEROL-FREE

OTHER AVAILABLE FLAVORS: cream of mushroom, cream of chicken, cream of celery, cream of vegetable, broc n' cheese, italian tomato

CASE PACK OUT: 40 display boxes per case and 7 packets per display box

SHELF LIFE: 36 months

DIRECTIONS: Empty contents of one packet into a cup or bowl, add 8 ounces (250 ml) of boiling water. Stir thoroughly until dissolved. Let stand 3 minutes.

Proti-15[®] is a Registered Trademark of Bariatric Nutrition Inc., Lachine, QC, Canada H8T 1B7.

Proti-15[®]

cream of vegetable soup mix

Nutrition Facts	
Serving Size 1 packet (26g)	
Servings Per Container 7	
Amount/Serving	
Calories 90	Calories from fat 10
% Daily Value*	
Total Fat 1g	2%
Saturated Fat 0g	0%
Trans Fat 0g	
Cholesterol 0mg	0%
Sodium 490mg	20%
Potassium 290mg	8%
Total Carbohydrate 5g	2%
Dietary Fiber 1g	4%
Sugars 1g	
Protein 15g	30%
Vitamin A	8%
Vitamin C	15%
Calcium	30%
Iron	2%

* Percent Daily Values are based on a 2,000 calorie diet. Your daily values may be higher or lower depending on your calorie needs.

Protein blend (milk protein isolate, hydrolyzed gelatin, sodium caseinate), modified corn starch, dehydrated vegetables (onion, red and green bell pepper, carrot, leek, garlic), yeast extract, hydrolyzed wheat protein, natural flavors, sunflower oil, maltodextrin, salt, xanthan gum, guar gum, sodium alginate, potassium chloride, parsley, spices, mono- and diglycerides, tocopherol, hydrogenated soybean oil.

Manufactured in a facility that processes eggs, sesame and tree nuts.
D141

For variety and versatility, our satisfying savory soups are hard to beat. All offer 15 grams of protein and several can also be used as sauces. A delicious option for a light meal and a real treat on cold days.

EXCELLENT SOURCE OF PROTEIN, EXCELLENT SOURCE OF CALCIUM, LOW-FAT, CHOLESTEROL-FREE, GOOD SOURCE OF VITAMIN C

OTHER AVAILABLE FLAVORS: cream of mushroom, cream of chicken, chicken noodle, cream of celery, broc n' cheese, italian tomato

CASE PACK OUT: 40 display boxes per case and 7 packets per display box

SHELF LIFE: 36 months

DIRECTIONS:

empty contents of one packet into a large cup or bowl. Add 1 cup (240 ml) of cold water. Stir until smooth.

stove top: Heat on medium while stirring occasionally until boiling point is reached.

Microwave: Heat on HIGH power for 1 ½ minutes. Remove from microwave, mix and reheat for another 30 seconds. Allow to rest before eating.

Proti-15[®] is a Registered Trademark of Bariatrix Nutrition Inc., Lachine, QC, Canada H8T 1B7.

Proti-15[®]

broc n' cheese soup mix

Nutrition Facts

Serving Size 1 packet (28g)
Servings Per Container 7

Amount/Serving	
Calories 100	Calories from Fat 5
% Daily Value*	
Total Fat 1g	2%
Saturated Fat 0g	0%
Trans Fat 0g	
Cholesterol 0mg	0%
Sodium 650mg	27%
Potassium 210mg	6%
Total Carbohydrate 7g	2%
Dietary Fiber 1g	4%
Sugars 1g	
Protein 15g	30%
Vitamin A	15%
Vitamin C	10%
Calcium	35%
Iron	4%

* Percent Daily Values are based on a 2,000 calorie diet. Your daily values may be higher or lower depending on your calorie needs.

Ingredients: Milk protein isolate, dehydrated vegetables (broccoli, spinach, onion, garlic), modified corn starch, natural and artificial flavors, potato flour, hydrolyzed wheat protein (contains soy), salt, xanthan gum, guar gum, sodium alginate, sunflower oil, yeast extract, dipotassium phosphate, silicon dioxide.

Manufactured in a facility that processes egg, sesame and tree nuts.

D143



For variety and versatility, our satisfying savory soups are hard to beat. All offer 15 grams of protein and several can also be used as sauces. A delicious option for a light meal and a real treat on cold days.

EXCELLENT SOURCE OF PROTEIN, EXCELLENT SOURCE OF CALCIUM, LOW-FAT, CHOLESTEROL-FREE, GOOD SOURCE OF VITAMINS A AND C

OTHER AVAILABLE FLAVORS: cream of mushroom, cream of chicken, chicken noodle, cream of celery, cream of vegetable, italian tomato

CASE PACK OUT: 40 display boxes per case and 7 packets per display box

SHELF LIFE: 36 months

DIRECTIONS:

stove top: empty contents of one packet into a large cup or bowl. Add 1 cup (240 ml) of cold water. Stir until smooth, heat on medium while stirring occasionally until boiling point is reached. Allow to rest before eating.

microwave: empty contents of one packet into a large microwave safe cup or bowl. Add 1 cup (240 ml) of cold water. Stir until smooth, eat on HIGH power for 1 ½ minutes. Remove from microwave, mix and reheat for another 30 seconds. Allow to rest before eating.

Proti-15[®] is a Registered Trademark of Bariatrix Nutrition Inc., Lachine, QC, Canada H8T 1B7.

Proti-15[®]

italian tomato soup mix

Nutrition Facts

Serving Size 1 packet (26g)
Servings Per Package 7

Amount/Serving	
Calories 90	Calories from Fat 10
% Daily Value*	
Total Fat 1g	2%
Saturated Fat 0g	0%
Trans Fat 0g	
Cholesterol 0mg	0%
Sodium 650mg	27%
Potassium 170mg	5%
Total Carbohydrate 6g	2%
Dietary Fiber 1g	4%
Sugars 0g	
Protein 15g	30%
Vitamin A	2%
Vitamin C	6%
Calcium	20%
Iron	4%

* Percent Daily Values are based on a 2,000 calorie diet. Your daily values may be higher or lower depending on your calorie needs.

Ingredients: Protein blend (milk protein isolate, soy protein isolate, sodium caseinate), modified corn starch, hydrolyzed gelatin, natural and artificial flavors, dehydrated vegetables (onion, tomato, garlic), hydrolyzed wheat protein, salt, sunflower oil, xanthan gum, guar gum, sodium alginate, spice, color (lycopene extract, caramel), maltodextrin, citric acid, dipotassium phosphate, malic acid, silicon dioxide, mono-diglycerides, tocopherols, sucralose (non-nutritive sweetener), soy lecithin.

Manufactured in a facility that processes egg, sesame and tree nuts.
D142

For variety and versatility, our satisfying savory soups are hard to beat. All offer 15 grams of protein and several can also be used as sauces. A delicious option for a light meal and a real treat on cold days.

EXCELLENT SOURCE OF PROTEIN, EXCELLENT SOURCE OF CALCIUM, LOW-FAT, CHOLESTEROL-FREE

OTHER AVAILABLE FLAVORS: cream of chicken, cream of tomato, cream of mushroom, chicken noodle, chicken bouillon, cream of vegetable, broc n' cheese, cream of celery

CASE PACK OUT: 40 display boxes per case and 7 packets per display box

SHELF LIFE: 36 months

DIRECTIONS:

stove top: empty contents of one packet into a large cup or bowl. Add 1 cup (240 ml) of cold water. Stir until smooth, heat on medium while stirring occasionally until boiling point is reached. Allow to rest before eating.

microwave: empty contents of one packet into a large microwave safe cup or bowl. Add 1 cup (240 ml) of cold water. Stir until smooth, eat on HIGH power for 1 1/2 minutes. Remove from microwave, mix and reheat for another 30 seconds. Allow to rest before eating.

Proti-15[®] is a Registered Trademark of Bariatrix Nutrition Inc., Lachine, QC, Canada H8T 1B7.

Proti-Smoothie™

ready-to-drink field berry smoothie

Nutrition Facts

Serving Size 1 bottle (250 ml)
Servings Per Container 8

Amount/Serving

Calories 140 **Calories from Fat** 30

% Daily Value*

Total Fat 3.5g **5%**

Saturated Fat 1.5g **8%**

Trans Fat 0g

Cholesterol 50mg **17%**

Sodium 200mg **8%**

Potassium 150mg **4%**

Total Carbohydrate 6g **2%**

Dietary Fiber 1g **4%**

Sugars 2g

Protein 20g **38%**

Vitamin A 0%

Vitamin C 0%

Calcium 25%

Iron 2%

* Percent Daily Values are based on a 2,000 calorie diet. Your daily values may be higher or lower depending on your calorie needs.

Ingredients: Filtered water, protein blend (whey protein concentrate, milk protein isolate), strawberry puree, cream, pectin, sodium phosphate, inulin, fruit juice concentrate (strawberry, raspberry blueberry), black carrot extract (color), natural and artificial flavors, sucralose and acesulfame-potassium (non-nutritive sweeteners), carrageenan.

Manufactured in a facility that processes egg, soy and wheat.

UBY126



No time for mixing? Not a problem! Our creamy smoothies are ready to drink anywhere, anytime. A convenient, low-cal, low-sugar alternatives to off-the-shelf ready-to-serve drinks. This high quality product delivers all the Bariatrix high protein needed for hunger relief in a small volume - without mixing!

CONTAINS 20 g OF WHEY PROTEIN, EXCELLENT SOURCE OF VITAMIN C, EXCELLENT SOURCE OF CALCIUM, GOOD SOURCE OF FIBER, LOW CHOLESTEROL

CASE PACK OUT: 3 packs per case and 8 bottles per pack

SHELF LIFE: 12 months

Proti-Smoothie™ is a Trademark of Bariatrix Nutrition Inc., Lachine, QC, Canada H8T 1B7.

Proti Anytime!®

ready-to-drink vanilla shake

Nutrition Facts

Serving Size 1 carton (236 ml)
Servings Per Container 6

Amount/Serving

Calories 100 Calories from fat 30

% Daily Value*

Total Fat 4g **6%**

Saturated Fat 1g **5%**

Trans Fat 0g

Cholesterol 15mg **5%**

Sodium 230mg **10%**

Potassium 220mg **6%**

Total Carbohydrate 3g **1%**

Dietary Fiber 2g **8%**

Sugars 1g

Protein 15g **30%**

Vitamin A 0%

Vitamin C 0%

Calcium 35%

Iron 0%

* Percent Daily Values are based on a 2,000 calorie diet. Your daily values may be higher or lower depending on your calorie needs.

Ingredients: Filtered water, protein blend (milk protein concentrate, whey protein concentrate, calcium caseinate), sunflower oil, microcrystalline cellulose, sodium carboxymethylcellulose, inulin, artificial flavor, sodium phosphate, DATEM (diacetyl tartaric acid esters of mono- and diglycerides), potassium phosphate, salt, carrageenan, colors (annatto, turmeric), sucralose and acesulfame-K (non nutritive sweeteners).
May contain soy, eggs and wheat.

U110



No time for mixing? Not a problem! Our smooth and creamy shakes are ready to drink anywhere, anytime. Convenient, low-cal, low-sugar alternatives to off-the-shelf, ready-to-drink shakes. These high quality products deliver all the Bariatrix high protein needed for hunger relief in a small volume - without mixing!

EXCELLENT SOURCE OF PROTEIN, EXCELLENT SOURCE OF CALCIUM

OTHER AVAILABLE FLAVORS: chocolate

CASE PACK OUT: 4 packs per case and 6 drink boxes per pack

SHELF LIFE: 12 months

Proti Anytime!® is a Registered Trademark of Bariatrix Nutrition Inc., Lachine, QC, Canada H8T 1B7.

Proti-Max[®]

strawberry banana smoothie mix



Nutrition Facts

Serving Size 1 bottle (28g)
Servings Per Container 1

Amount/Serving	
Calories 100	Calories from fat 0
% Daily Value*	
Total Fat 0g	0%
Saturated Fat 0g	0%
Trans Fat 0g	
Cholesterol 0mg	0%
Sodium 150mg	6%
Potassium 120mg	3%
Total Carbohydrate 5g	2%
Dietary Fiber 2g	8%
Sugars 0g	
Protein 20g	16%
Vitamin A	0%
Vitamin C	0%
Calcium	4%
Iron	0%

* Percent Daily Values are based on a 2,000 calorie diet. Your daily values may be higher or lower depending on your calorie needs.

Ingredients: Hydrolyzed gelatin, whey protein isolate (**milk**), citric acid, natural and artificial flavors, carrageenan, **wheat** dextrin, cellulose gum, xanthan gum, potassium citrate, silicon dioxide, acesulfame-potassium and sucralose (non-nutritive sweeteners), color (beet juice powder and turmeric extract), **soy** lecithin.

Manufactured in a facility that processes egg, sesame and tree nuts.

P814

Take your protein on the road with one of our delicious new smoothie mixes. Just fill the convenient single-serving bottle with water, shake and enjoy!

GOOD SOURCE OF PROTEIN, CHOLESTEROL FREE, FAT-FREE

OTHER AVAILABLE FLAVORS: lemon raspberry, cafe latte, mango

CASE PACK OUT: 8 packs per case and 6 bottles per pack

SHELF LIFE: 36 months

MIXING INSTRUCTIONS: Fill bottle with cold water up to arrow (8 oz), shake well until completely dissolved. If desired, let stand 2 minutes to reduce the foam.

Proti-Max[®] is a Registered Trademark of Bariatrix Nutrition Inc., Lachine, QC, Canada H8T 1B7.

Proti-Max[®]

lemon raspberry smoothie mix

Nutrition Facts

Serving Size 1 bottle (28g)
Servings Per Container 1

Amount/Serving	
Calories 100	Calories from fat 0
% Daily Value*	
Total Fat 0g	0%
Saturated Fat 0g	0%
Trans Fat 0g	
Cholesterol 0mg	0%
Sodium 150mg	6%
Potassium 120mg	3%
Total Carbohydrate 5g	2%
Dietary Fiber 2g	8%
Sugars 0g	
Protein 20g	16%
Vitamin A	0%
Vitamin C	0%
Calcium	4%
Iron	0%

* Percent Daily Values are based on a 2,000 calorie diet. Your daily values may be higher or lower depending on your calorie needs.

Ingredients: Hydrolyzed gelatin, whey protein isolate (**milk**), citric acid, carrageenan, natural and artificial flavors, **wheat** dextrin, cellulose gum, xanthan gum, potassium citrate, silicon dioxide, color (beet juice powder and grape skin extract), acesulfame-potassium and sucralose (non-nutritive sweeteners), **soy** lecithin.

Manufactured in a facility that processes egg, sesame and tree nuts.

P815



Take your protein on the road with one of our delicious new smoothie mixes. Just fill the convenient single-serving bottle with water, shake and enjoy!

GOOD SOURCE OF PROTEIN, CHOLESTEROL FREE, FAT-FREE

OTHER AVAILABLE FLAVORS: strawberry banana, cafe latte, mango

CASE PACK OUT: 8 packs per case and 6 bottles per pack

SHELF LIFE: 36 months

MIXING INSTRUCTIONS: Fill bottle with cold water up to arrow (8 oz), shake well until completely dissolved. If desired, let stand 2 minutes to reduce the foam.

Proti-Max[®] is a Registered Trademark of Bariatrix Nutrition Inc., Lachine, QC, Canada H8T 1B7.

Proti-Max[®]

cafe latte smoothie mix



Nutrition Facts

Serving Size 1 bottle (31g)
Servings Per Container 1

Amount/Serving	
Calories 110	Calories from fat 0
% Daily Value*	
Total Fat 0g	0%
Saturated Fat 0g	0%
Trans Fat 0g	
Cholesterol 0mg	0%
Sodium 170mg	7%
Potassium 180mg	5%
Total Carbohydrate 6g	2%
Dietary Fiber 1g	4%
Sugars 3g	
Protein 20g	16%
Vitamin A	0%
Vitamin C	0%
Calcium	4%
Iron	0%

* Percent Daily Values are based on a 2,000 calorie diet. Your daily values may be higher or lower depending on your calorie needs.

Ingredients: Hydrolyzed gelatin, whey protein isolate (**milk**), natural and artificial flavors, instant coffee powder (contains **wheat**), fructose, carrageenan, cellulose gum, xanthan gum, titanium dioxide (color), maltodextrin, potassium citrate, silicon dioxide, sucralose (non-nutritive sweetener), **soy** lecithin.

Manufactured in a facility that processes egg, sesame and tree nuts.

P816



Take your protein on the road with one of our delicious new smoothie mixes. Just fill the convenient single-serving bottle with water, shake and enjoy!

GOOD SOURCE OF PROTEIN, CHOLESTEROL-FREE, FAT-FREE

OTHER AVAILABLE FLAVORS: strawberry banana, lemon raspberry, mango

CASE PACK OUT: 8 packs per case and 6 bottles per pack

SHELF LIFE: 36 months

MIXING INSTRUCTIONS: Fill bottle with cold water up to arrow (8 oz), shake well until completely dissolved. If desired, let stand 2 minutes to reduce the foam.

Proti-Max[®] is a Registered Trademark of Bariatrix Nutrition Inc., Lachine, QC, Canada H8T 1B7.

Proti-Max[®]

mango smoothie mix

Nutrition Facts

Serving Size 1 bottle (28g)
Servings Per Container 1

Amount/Serving	
Calories 100	Calories from fat 0
% Daily Value*	
Total Fat 0g	0%
Saturated Fat 0g	0%
Trans Fat 0g	
Cholesterol 0mg	0%
Sodium 150mg	6%
Potassium 120mg	3%
Total Carbohydrate 5g	2%
Dietary Fiber 1g	4%
Sugars 3g	
Protein 20g	16%
Vitamin A	0%
Vitamin C	0%
Calcium	4%
Iron	0%

* Percent Daily Values are based on a 2,000 calorie diet. Your daily values may be higher or lower depending on your calorie needs.

Ingredients: Hydrolyzed gelatin, whey protein isolate (**milk**), citric acid, natural and artificial flavors, carrageenan, cellulose gum, xanthan gum, **wheat** dextrin, potassium citrate, color (turmeric extract and beet juice powder), acesulfame-potassium and sucralose (non-nutritive sweeteners), silicon dioxide, **soy** lecithin.

Manufactured in a facility that processes egg, sesame and tree nuts.

P817



Take your protein on the road with one of our delicious new smoothie mixes. Just fill the convenient single-serving bottle with water, shake and enjoy!

GOOD SOURCE OF PROTEIN, NO CHOLESTEROL, FAT-FREE

OTHER AVAILABLE FLAVORS: strawberry banana, lemon raspberry, cafe latte

CASE PACK OUT: 8 packs per case and 6 bottles per pack

SHELF LIFE: 36 months

MIXING INSTRUCTIONS: Fill bottle with cold water up to arrow (8 oz), shake well until completely dissolved. If desired, let stand 2 minutes to reduce the foam.

Proti-Max[®] is a Registered Trademark of Bariatrix Nutrition Inc., Lachine, QC, Canada H8T 1B7.

30



Bariatrix Nutrition

For more information on this or any of our innovative products, please contact one of our sales representatives.
Bariatrix Nutrition Corp., 308 Industrial Park Road., Georgia, Vermont, 05454 | (800) 468-3438 | www.bariatrix.com

Proti-Max[®]

mixed berry shake mix

Nutrition Facts

Serving Size 1 bottle (34g)
Servings Per Container 1

Amount/Serving

Calories 160 Calories from fat 70

% Daily Value*

Total Fat 8g	12%
Saturated Fat 6g	30%
Trans Fat 0g	
Cholesterol 15mg	5%
Sodium 160mg	7%
Potassium 340mg	10%
Total Carbohydrate 5g	2%
Dietary Fiber 2g	8%
Sugars 1g	
Protein 17g	34%

Vitamin A 25 %	• Vitamin C 25 %
Calcium 25 %	• Iron 25 %
Vitamin D 25 %	• Vitamin E 25 %
Vitamin K 25 %	• Thiamin 25 %
Riboflavin 25 %	• Niacin 25 %
Vitamin B6 25 %	• Folate 25 %
Vitamin B12 25 %	• Biotin 25 %
Pantothenate 25 %	• Phosphorus 25 %
Iodine 25 %	• Magnesium 25 %
Zinc 25 %	• Selenium 25 %
Copper 25 %	• Manganese 25 %
Chromium 25 %	• Molybdenum 25 %

* Percent Daily Values are based on a 2,000 calorie diet. Your daily values may be higher or lower depending on your calorie needs.

Ingredients: Protein blend (calcium caseinate, whey protein concentrate, sodium caseinate), coconut oil, corn syrup solids, fructooligosaccharide, dipotassium phosphate, sunflower oil, natural and artificial flavors, mono- and diglycerides, salt, vitamin and mineral mix (ascorbic acid, ferrous fumarate, vitamin E as acetate, niacinamide, copper gluconate, zinc oxide, calcium d-pantothenate, manganese sulfate, pyridoxine HCL, riboflavin, thiamin mononitrate, vitamin A as palmitate, chromium chloride, folic acid, d-biotin, potassium iodide, sodium molybdate, sodium selenite, phytanadione as vitamin K1, cholecalciferol as vitamin D3, cyanocobalamin as vitamin B12), malic acid, magnesium oxide, sunflower lecithin, xanthan gum, silicon dioxide, sucralose & acesulfame-potassium (non-nutritive sweeteners), beet juice color, soy lecithin, tricalcium phosphate, tocopherols.

Contains milk and soy. Manufactured in a facility that processes egg, wheat, peanuts and tree nuts.

DBM100 - PL000081V01



Take your protein on the road with one of our handy and delicious fortified shake mixes. Just fill the convenient single-serving bottle with water, shake and enjoy!

EXCELLENT SOURCE OF PROTEIN, GLUTEN-FREE

OTHER AVAILABLE FLAVORS: chocolate, vanilla

CASE PACK OUT: 8 packs per case and 6 bottles per pack

SHELF LIFE: 12 months

MIXING INSTRUCTIONS: Fill bottle with cold water up to arrow (8 oz), shake well until completely dissolved. If desired, let stand 2 minutes to reduce the foam.

Proti-Max[®] is a Registered Trademark of Bariatrix Nutrition Inc., Lachine, QC, Canada H8T 1B7.

Proti-Max[®]

chocolate shake mix

Nutrition Facts

Serving Size 1 bottle (37g)
Servings Per Container 1

Amount/Serving

Calories 160 Calories from fat 70

% Daily Value*

Total Fat 8g **12%**

Saturated Fat 6g **30%**

Trans Fat 0g

Cholesterol 15mg **5%**

Sodium 160mg **7%**

Potassium 460mg **13%**

Total Carbohydrate 7g **2%**

Dietary Fiber 2g **8%**

Sugars 1g

Protein 17g **34%**

Vitamin A 25 % • Vitamin C 25 %

Calcium 25 % • Iron 25 %

Vitamin D 25 % • Vitamin E 25 %

Vitamin K 25 % • Thiamin 25 %

Riboflavin 25 % • Niacin 25 %

Vitamin B6 25 % • Folate 25 %

Vitamin B12 25 % • Biotin 25 %

Pantothenate 25 % • Phosphorus 25 %

Iodine 25 % • Magnesium 25 %

Zinc 25 % • Selenium 25 %

Copper 25 % • Manganese 25 %

Chromium 25 % • Molybdenum 25 %

* Percent Daily Values are based on a 2,000 calorie diet. Your daily values may be higher or lower depending on your calorie needs.

Ingredients: Protein blend (calcium caseinate, whey protein concentrate, sodium caseinate), cocoa powder (processed with alkali), coconut oil, corn syrup solids, natural flavors, maltodextrin, dipotassium phosphate, sunflower oil, salt, mono- and diglycerides, fructooligosaccharide, vitamin & mineral mix (ascorbic acid, ferrous fumarate, vitamin E as acetate, niacinamide, copper gluconate, zinc oxide, calcium d-pantothenate, manganese sulfate, pyridoxine HCL, riboflavin, thiamin mononitrate, vitamin A as palmitate, chromium chloride, folic acid, d-biotin, potassium iodide, sodium molybdate, sodium selenite, phytonadione as vitamin K1, cholecalciferol as vitamin D3, cyanocobalamin as vitamin B12), magnesium oxide, sunflower lecithin, silicon dioxide, sucralose & acesulfame-potassium (non-nutritive sweeteners), tricalcium phosphate, soy lecithin, tocopherols.

Contains milk and soy. Manufactured in a facility that processes egg, wheat, peanuts and tree nuts.

DBM101 - PL000082V01



Take your protein on the road with one of our handy and delicious fortified shake mixes. Just fill the convenient single-serving bottle with water, shake and enjoy!

EXCELLENT SOURCE OF PROTEIN, GLUTEN-FREE

OTHER AVAILABLE FLAVORS: berry, vanilla

CASE PACK OUT: 8 packs per case and 6 bottles per pack

SHELF LIFE: 12 months

MIXING INSTRUCTIONS: Fill bottle with cold water up to arrow (8 oz), shake well until completely dissolved. If desired, let stand 2 minutes to reduce the foam.

Proti-Max[®] is a Registered Trademark of Bariatrix Nutrition Inc., Lachine, QC, Canada H8T 1B7.

Proti-Max[®]

vanilla shake mix



Nutrition Facts

Serving Size 1 bottle (35g)
Servings Per Container 1

Amount/Serving	
Calories 160	Calories from fat 70
% Daily Value*	
Total Fat 8g	12%
Saturated Fat 6g	30%
Trans Fat 0g	
Cholesterol 15mg	5%
Sodium 160mg	7%
Potassium 320mg	9%
Total Carbohydrate 6g	2%
Dietary Fiber 2g	8%
Sugars 1g	
Protein 17g	34%
Vitamin A 25 %	• Vitamin C 25 %
Calcium 25 %	• Iron 25 %
Vitamin D 25 %	• Vitamin E 25 %
Vitamin K 25 %	• Thiamin 25 %
Riboflavin 25 %	• Niacin 25 %
Vitamin B6 25 %	• Folate 25 %
Vitamin B12 25 %	• Biotin 25 %
Pantothenate 25 %	• Phosphorus 25 %
Iodine 25 %	• Magnesium 25 %
Zinc 25 %	• Selenium 25 %
Copper 25 %	• Manganese 25 %
Chromium 25 %	• Molybdenum 25 %

* Percent Daily Values are based on a 2,000 calorie diet. Your daily values may be higher or lower depending on your calorie needs.

Ingredients: Protein blend (calcium caseinate, whey protein concentrate, sodium caseinate), coconut oil, corn syrup solids, fructooligosaccharide, sunflower oil, maltodextrin, natural & artificial flavors, dipotassium phosphate, mono- and diglycerides, salt, vitamin & mineral mix (ascorbic acid, ferrous fumarate, vitamin E as acetate, niacinamide, copper gluconate, zinc oxide, calcium d-pantothenate, manganese sulfate, pyridoxine HCL, riboflavin, thiamin mononitrate, vitamin A as palmitate, chromium chloride, folic acid, d-biotin, potassium iodide, sodium molybdate, sodium selenite, phytonadione as vitamin K1, cholecalciferol as vitamin D3, cyanocobalamin as vitamin B12), magnesium oxide, xanthan gum, sunflower lecithin, silicon dioxide, sucralose & acesulfame-potassium (non-nutritive sweeteners), tocopherols, soy lecithin, beta-carotene (color), tricalcium phosphate.

Contains milk and soy. Manufactured in a facility that processes egg, wheat, peanuts and tree nuts.
DBM102 - PL000083V01

Take your protein on the road with one of our handy and delicious fortified shake mixes. Just fill the convenient single-serving bottle with water, shake and enjoy!

EXCELLENT SOURCE OF PROTEIN, GLUTEN-FREE

OTHER AVAILABLE FLAVORS: berry, chocolate

CASE PACK OUT: 8 packs per case and 6 bottles per pack

SHELF LIFE: 12 months

MIXING INSTRUCTIONS: Fill bottle with cold water up to arrow (8 oz), shake well until completely dissolved. If desired, let stand 2 minutes to reduce the foam.

Proti-Max[®] is a Registered Trademark of Bariatrix Nutrition Inc., Lachine, QC, Canada H8T 1B7.



Bariatrix Nutrition

For more information on this or any of our innovative products, please contact one of our sales representatives.
Bariatrix Nutrition Corp., 308 Industrial Park Road., Georgia, Vermont, 05454 | (800) 468-3438 | www.bariatrix.com

Proti-Bar[®]

caramel delight protein bar

Nutrition Facts	
Serving Size 1 bar (42g)	
Servings Per Container 7	
Amount/Serving	
Calories 150	Calories from fat 35
% Daily Value*	
Total Fat 3.5g	6%
Saturated Fat 2.5g	13%
Trans Fat 0g	
Cholesterol 5mg	2%
Sodium 220mg	9%
Potassium 140mg	4%
Total Carbohydrate 16g	5%
Dietary Fiber 3g	12%
Sugars 5g	
Sugar Alcohol 6g	
Protein 15g	30%
Vitamin A	0%
Vitamin C	0%
Calcium	4%
Iron	10%

Percent Daily Values are based on a 2,000 calorie diet. Your daily values may be higher or lower depending on your calorie needs.

Ingredients: Protein blend (soy protein isolate, whey protein concentrate, milk protein concentrate), maltitol syrup, sugar, fructooligosaccharides, glycerin, water, fractionated palm and palm kernel oil, organic cane sugar, modified milk ingredient, tapioca starch, cocoa (processed with alkali), natural and artificial flavors, buttermilk, maltitol, butter, mono- and diglycerides, soy lecithin, cream, salt, pectin, sucralose (non-nutritive sweetener), sodium phosphate, sodium citrate, calcium carbonate, carrageenan, cellulose, tocopherol (antioxidant).

May also contain eggs, wheat, tree nuts and peanuts

T305



Here's a perfect anytime snack for people on the go! Formulated to provide a balanced blend of slow and fast acting proteins, these delicious bars deliver long-lasting satisfaction. Like all Bariatrix products, Proti-Bars[®] top the charts in great taste and innovative nutrition.

EXCELLENT SOURCE OF PROTEIN, GOOD SOURCE OF IRON, GOOD SOURCE OF FIBER

OTHER AVAILABLE FLAVORS: chocolate peanut, chocolate decadence, caramel nut, cookies & cream, nutty caramel crunch, cinnamon crunch, cocoa mint, supreme peanut, triple chocolate, peanut butter cup, cinnamon oatmeal

CASE PACK OUT: 12 display boxes per case and 7 bars per display box

SHELF LIFE: 15 months

Proti-Bar[®] is a Registered Trademark of Bariatrix Nutrition Inc., Lachine, QC, Canada H8T 1B7.

Proti-Bar[®]

chocolate peanut protein bar

Nutrition Facts

Serving Size 1 bar (42g)
Servings Per Container 7

Amount/Serving

Calories 160 Calories from fat 45

% Daily Value*

Total Fat 5g **8%**

Saturated Fat 2.5g **13%**

Trans Fat 0g

Cholesterol 0mg **0%**

Sodium 160mg **7%**

Potassium 135mg **4%**

Total Carbohydrate 16g **5%**

Dietary Fiber 3g **12%**

Sugars 5g

Sugar Alcohol 6g

Protein 15g **30%**

Vitamin A 0%

Vitamin C 0%

Calcium 6%

Iron 10%

Percent Daily Values are based on a 2,000 calorie diet. Your daily values may be higher or lower depending on your calorie needs.

Ingredients: Protein blend (**soy** protein isolate, whey protein isolate, **milk** protein concentrate), sugar, maltitol syrup, glycerin, **peanuts**, fructooligosaccharides, water, modified palm and palm kernel oil, organic cane sugar, partially defatted peanut flour, modified milk ingredient, tapioca starch, cocoa (processed with alkali), buttermilk, peanut oil, natural and artificial flavors, unsweetened chocolate, maltitol, butter, cream, soy lecithin, salt, mono- and diglycerides, pectin, DATEM (diacetyl tartaric acid ester of mono- and diglycerides), sucralose (non nutritive sweetener), sodium phosphate, sodium citrate, calcium carbonate, tocopherol, carrageenan.

May also contain traces of wheat and tree nuts.

T308



Here's a perfect anytime snack for people on the go! Formulated to provide a balanced blend of slow and fast acting proteins, these delicious bars deliver long-lasting satisfaction. Like all Bariatrix products, Proti-Bars[®] top the charts in great taste and innovative nutrition.

EXCELLENT SOURCE OF PROTEIN, GOOD SOURCE OF FIBER

OTHER AVAILABLE FLAVORS: caramel delight, chocolate decadence, caramel nut, cookies & cream, nutty caramel crunch, cinnamon crunch, cocoa mint, supreme peanut, triple chocolate, peanut butter cup, cinnamon oatmeal

CASE PACK OUT: 12 display boxes per case and 7 bars per display box

SHELF LIFE: 15 months

Proti-Bar[®] is a Registered Trademark of Bariatrix Nutrition Inc., Lachine, QC, Canada H8T 1B7.

35

 Bariatrix Nutrition

For more information on this or any of our innovative products, please contact one of our sales representatives.
Bariatrix Nutrition Corp., 308 Industrial Park Road., Georgia, Vermont, 05454 | (800) 468-3438 | www.bariatrix.com

Proti-Bar[®]

chocolate decadence protein bar

Nutrition Facts

Serving Size 1 bar (42g)
Servings Per Container 7

Amount/Serving

Calories 160 Calories from fat 40

% Daily Value*

Total Fat 4.5g **7%**

Saturated Fat 2.5g **13%**

Trans Fat 0g

Cholesterol 5mg **2%**

Sodium 190mg **8%**

Potassium 210mg **6%**

Total Carbohydrate 16g **6%**

Dietary Fiber 3g **13%**

Sugars 5g

Sugar Alcohol 5g

Protein 15g **30%**

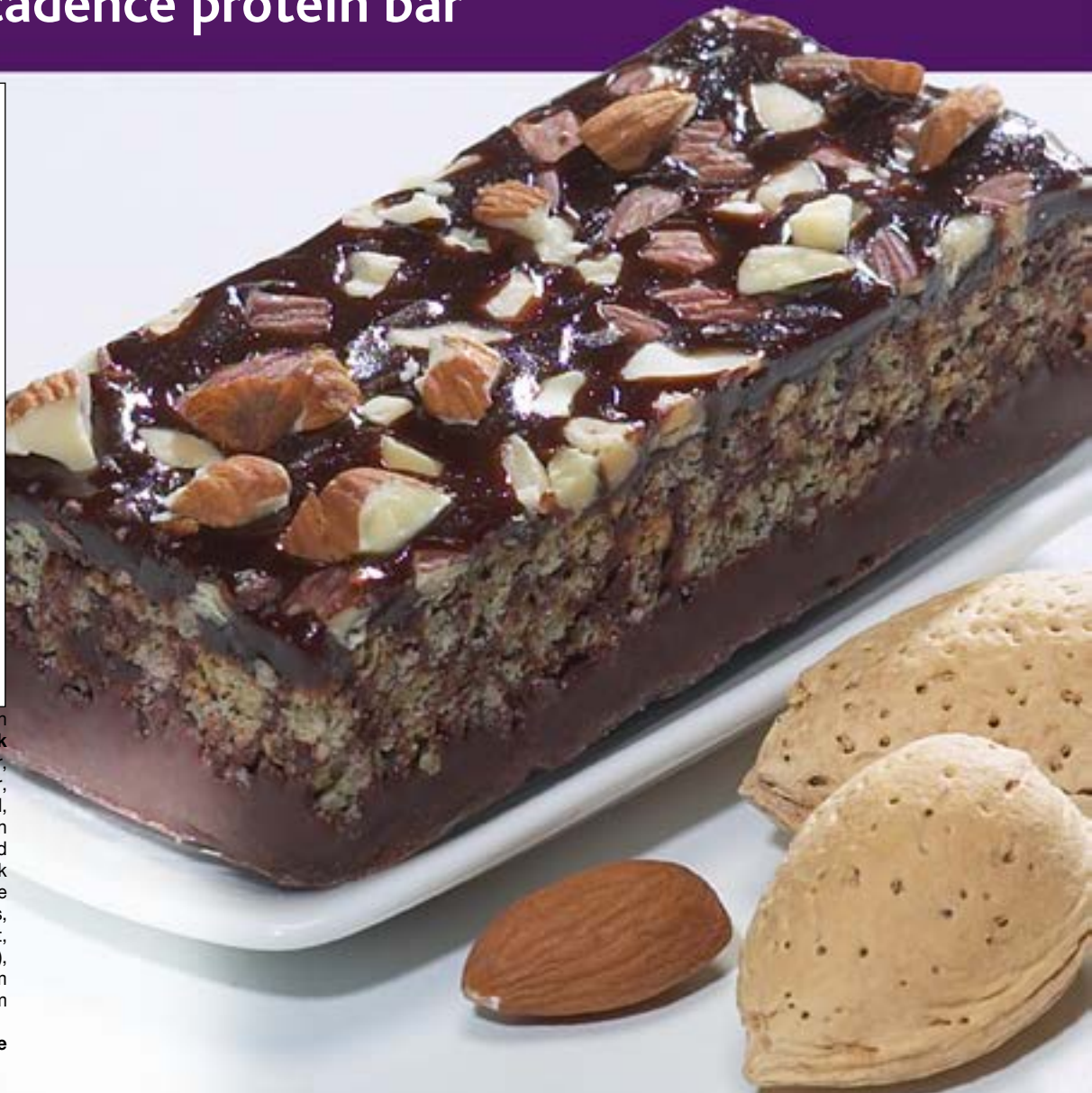
Vitamin A 0%

Vitamin C 0%

Calcium 4%

Iron 10%

* Percent Daily Values are based on a 2,000 calorie diet. Your daily values may be higher or lower depending on your calorie needs.



Ingredients : Protein blend (soy protein isolate, whey protein concentrate, milk protein concentrate), maltitol syrup, sugar, glycerin, fructooligosaccharides, water, fractionated palm and palm kernel oil, almonds, cocoa powder (processed with alkali), organic cane sugar, unsweetened chocolate, tapioca starch, modified milk ingredients, milk ingredients, prune juice concentrate, natural and artificial flavors, maltitol, mono- and diglycerides, salt, pectin, sucralose (non-nutritive sweetener), cellulose, vanilla extract, sodium phosphate, sodium citrate, calcium carbonate, soy lecithin, carrageenan.

May contain traces of eggs, wheat, tree nuts and peanuts.

T306

Here's a perfect anytime snack for people on the go! Formulated to provide a balanced blend of slow and fast acting proteins, these delicious bars deliver long-lasting satisfaction. Like all Bariatrix products, Proti-Bars[®] top the charts in great taste and innovative nutrition.

EXCELLENT SOURCE OF PROTEIN

OTHER AVAILABLE FLAVORS: caramel delight, chocolate peanut, caramel nut, cookies & cream, nutty caramel crunch, cinnamon crunch, cocoa mint, supreme peanut, triple chocolate, peanut butter cup, cinnamon oatmeal

CASE PACK OUT: 12 display boxes per case and 7 bars per display box

SHELF LIFE: 13 months

Proti-Bar[®] is a Registered Trademark of Bariatrix Nutrition Inc., Lachine, QC, Canada H8T 1B7.

36

 Bariatrix Nutrition

For more information on this or any of our innovative products, please contact one of our sales representatives.
Bariatrix Nutrition Corp., 308 Industrial Park Road., Georgia, Vermont, 05454 | (800) 468-3438 | www.bariatrix.com

Proti-Bar[®]

cookies & cream protein bar

Nutrition Facts

Serving Size 1 bar (45g)
Servings Per Container 7

Amount/Serving	
Calories 160	Calories from Fat 50
% Daily Value*	
Total Fat 5g	8%
Saturated Fat 4.5g	23%
Trans Fat 0g	
Cholesterol 5mg	2%
Sodium 130mg	5%
Potassium 75mg	2%
Total Carbohydrate 18g	6%
Dietary Fiber 1g	4%
Sugars 6g	
Protein 15g	30%

Vitamin A 0% • Vitamin C 0%
Calcium 8% • Iron 4%

* Percent Daily Values are based on a 2,000 calorie diet.
Your daily values may be higher or lower depending on your calorie needs.

Ingredients: Protein blend (soy protein isolate, milk protein isolate, whey protein isolate, acid casein, milk protein concentrate, whey protein concentrate, calcium caseinate), maltitol syrup, vegetable oil (palm kernel oil, palm oil, shea oil, soybean oil), sugar, glycerin, hydrolyzed gelatin, invert sugar, water, sorbitol, natural and artificial flavors, cocoa powder (processed with alkali), fructooligosaccharide, unsweetened chocolate, yogurt powder (cultured non-fat milk solids), butter, tapioca starch, titanium dioxide (color), skim milk powder, rice flour, soy lecithin, salt, cream (cream, milk, cellulose gel, milk solids, carrageenan, cellulose gum), mono- and diglycerides, sodium phosphate, calcium carbonate, chocolate liquor, sodium bicarbonate, sodium citrate, sucralose (non-nutritive sweetener), tocopherols, carrageenan.

Contains: soy, milk, egg, wheat, peanuts and tree nuts (almonds).

BLD3131



Here's a perfect anytime snack for people on the go! Formulated to provide a balanced blend of slow and fast acting proteins, these delicious bars deliver long-lasting satisfaction. Like all Bariatrix products, Proti-Bars[®] top the charts in great taste and innovative nutrition.

EXCELLENT SOURCE OF PROTEIN

OTHER AVAILABLE FLAVORS: caramel delight, chocolate peanut, chocolate decadence, caramel nut, nutty caramel crunch, cinnamon crunch, cocoa mint, supreme peanut, triple chocolate, peanut butter cup, cinnamon oatmeal

CASE PACK OUT: 12 display boxes per case and 7 bars per display box

SHELF LIFE: 13 months

Proti-Bar[®] is a Registered Trademark of Bariatrix Nutrition Inc., Lachine, QC, Canada H8T 1B7.

Proti-Bar[®]

nutty caramel crunch protein bar

Nutrition Facts

Serving Size 1 bar (45g)
Servings Per Container 7

Amount/Serving	
Calories 160	Calories from Fat 60
% Daily Value*	
Total Fat 7g	11%
Saturated Fat 4g	20%
Trans Fat 0g	
Cholesterol 5mg	2%
Sodium 190mg	8%
Potassium 90mg	3%
Total Carbohydrate 17g	6%
Dietary Fiber 3g	12%
Sugars 6g	
Protein 15g	30%
Vitamin A 0%	Vitamin C 0%
Calcium 10%	Iron 0%

* Percent Daily Values are based on a 2,000 calorie diet. Your daily values may be higher or lower depending on your calorie needs.

Ingredients: Protein blend (soy protein isolate, milk protein isolate, milk protein concentrate, acid casein, whey protein isolate, calcium caseinate, whey protein concentrate), invert sugar, vegetable oil (palm kernel oil, palm oil, shea oil), maltitol syrup, glucose syrup, glycerin, polydextrose, hydrolyzed gelatin, water, sorbitol, natural and artificial flavors, peanuts, peanut butter, fructooligosaccharide, tapioca starch, cocoa powder (processed with alkali), partially defatted peanut flour, fructose, soy lecithin, salt, sodium phosphate, calcium carbonate, monoglycerides, sucralose (non-nutritive sweetener), peanut oil, soybean oil, tocopherols.

Contains: milk, egg, soy, peanuts and tree nuts (almonds).

Manufactured in a facility that processes wheat.

BLD347



Here's a perfect anytime snack for people on the go! Formulated to provide a balanced blend of slow and fast acting proteins, these delicious bars deliver long-lasting satisfaction. Like all Bariatrix products, Proti-Bars[®] top the charts in great taste and innovative nutrition.

EXCELLENT SOURCE OF PROTEIN

OTHER AVAILABLE FLAVORS: caramel delight, chocolate peanut, chocolate decadence, caramel nut, cookies & cream, cinnamon crunch, cocoa mint, supreme peanut, triple chocolate, peanut butter cup, cinnamon oatmeal

CASE PACK OUT: 12 display boxes per case and 7 bars per display box

SHELF LIFE: 13 months

Proti-Bar[®] is a Registered Trademark of Bariatrix Nutrition Inc., Lachine, QC, Canada H8T 1B7.

39

 Bariatrix Nutrition

For more information on this or any of our innovative products, please contact one of our sales representatives.
Bariatrix Nutrition Corp., 308 Industrial Park Road., Georgia, Vermont, 05454 | (800) 468-3438 | www.bariatrix.com

Proti-Bar[®]

cocoa mint protein bar

Nutrition Facts

Serving Size 1 bar (45g)
Servings Per Container 7

Amount/Serving

Calories 160 Calories from Fat 45

% Daily Value*

Total Fat 5g **8%**

Saturated Fat 4.5g **23%**

Trans Fat 0g

Cholesterol 5mg **2%**

Sodium 90mg **4%**

Potassium 130mg **4%**

Total Carbohydrate 18g **6%**

Dietary Fiber 2g **8%**

Sugars 5g

Sugar Alcohol 10g

Protein 15g **30%**

Vitamin A 0% • Vitamin C 0%

Calcium 10% • Iron 6%

Percent Daily Values are based on a 2,000 calorie diet. Your daily values may be higher or lower depending on your calorie needs.



Ingredients: Protein blend (soy protein isolate, milk protein isolate, acid casein, whey protein isolate, milk protein concentrate, calcium caseinate, whey protein concentrate), maltitol syrup, vegetable oil (palm kernel oil, palm oil, shea oil, soybean oil), glycerin, hydrolyzed gelatin, sugar, water, invert sugar, sorbitol, cocoa powder (processed with alkali), fructooligosaccharide, natural and artificial flavors, unsweetened chocolate, butter, soy lecithin, cream (cream, milk, cellulose gel, milk solids, carrageenan, cellulose gum), salt, tapioca starch, sodium phosphate, mono- and diglycerides, sodium citrate, sucralose (non-nutritive sweetener), carrageenan, tocopherols.

Contains: milk, soy, egg, peanuts and tree nuts (almonds). Manufactured in a facility that processes wheat.

BLD355

Here's a perfect anytime snack for people on the go! Formulated to provide a balanced blend of slow and fast acting proteins, these delicious bars deliver long-lasting satisfaction. Like all Bariatrix products, Proti-Bars[®] top the charts in great taste and innovative nutrition.

EXCELLENT SOURCE OF PROTEIN

OTHER AVAILABLE FLAVORS: caramel delight, chocolate peanut, chocolate decadence, caramel nut, cookies & cream, nutty caramel crunch, cinnamon crunch, supreme peanut, triple chocolate, peanut butter cup, cinnamon oatmeal

CASE PACK OUT: 12 display boxes per case and 7 bars per display box

SHELF LIFE: 13 months

Proti-Bar[®] is a Registered Trademark of Bariatrix Nutrition Inc., Lachine, QC, Canada H8T 1B7.

41



For more information on this or any of our innovative products, please contact one of our sales representatives.
Bariatrix Nutrition Corp., 308 Industrial Park Road., Georgia, Vermont, 05454 | (800) 468-3438 | www.bariatrix.com

Proti-Square®

vanilla wafers

Nutrition Facts

Serving Size 2 wafers (40.4g)
Servings Per Container 5

Amount/Serving

Calories 200 **Calories from Fat** 80

% Daily Value*

Total Fat 9g **14%**

Saturated Fat 6g **30%**

Trans Fat 0g

Cholesterol 0mg **0%**

Sodium 75mg **3%**

Potassium 15mg **0%**

Total Carbohydrate 13g **4%**

Dietary Fiber Less than 1g **2%**

Sugars 6g

Protein 15g **25%**

Vitamin A 0%

Vitamin C 0%

Calcium 0%

Iron 0%

* Percent Daily Values are based on a 2,000 calorie diet. Your daily values may be higher or lower depending on your calorie needs.

Ingredients: Protein blend (milk protein isolate, hydrolyzed gelatin, whey protein isolate, pea protein isolate), **wheat** flour, fractionated palm and palm kernel oil, sugar, fructose, milk ingredients (skim milk powder, whole milk powder, butter fat), cocoa butter, unsweetened chocolate, **soy** lecithin, soy flour, sunflower oil, water, natural and artificial flavors, salt, sodium bicarbonate, sucralose (non-nutritive sweetener), corn flour.

Manufactured in a facility that processes tree nuts

BRW510 - PD000309V02



Fluffy high-protein filling sandwiched between light and crispy wafers – Proti-Squares® are tasty²!

Our richest offerings, these delicious treats are more than just a sweet indulgence; they are packed full of protein that will keep you feeling full and satisfied long after your coffee break is over.

EXCELLENT SOURCE OF PROTEIN

OTHER AVAILABLE FLAVORS: chocolate, mocha

CASE PACK OUT: 40 display boxes per case and 5 packets per display box

SHELF LIFE: 12 months

Proti-Square® is a Registered Trademark of Bariatrix Nutrition Inc., Lachine, QC, Canada H8T 1B7.

Proti-Square®

dark chocolate wafers

Nutrition Facts

Serving Size 2 wafers (41.9g)
Servings Per Container 5

Amount/Serving

Calories 210 **Calories from Fat** 90

% Daily Value*

Total Fat 9g **14%**

Saturated Fat 6g **30%**

Trans Fat 0g

Cholesterol 0mg **0%**

Sodium 80mg **3%**

Potassium 25mg **1%**

Total Carbohydrate 13g **4%**

Dietary Fiber 1g **4%**

Sugars 5g

Protein 15g **25%**

Vitamin A 0%

Vitamin C 0%

Calcium 0%

Iron 2%

* Percent Daily Values are based on a 2,000 calorie diet. Your daily values may be higher or lower depending on your calorie needs.

Ingredients: Protein blend (milk protein isolate, hydrolyzed gelatin, whey protein isolate, pea protein isolate), wheat flour, fractionated palm and palm kernel oil, unsweetened chocolate, water, sugar, fructose, soy lecithin, cocoa butter, cocoa powder (processed with alkali), soy flour, sunflower oil, natural and artificial flavors, salt, butter fat, sucralose (non-nutritive sweetener), sodium bicarbonate, corn flour.

Manufactured in a facility that processes tree nuts.

BRW512 - PD000311V03



Fluffy high-protein filling sandwiched between light and crispy wafers – Proti-Squares® are tasty²!

Our richest offerings, these delicious treats are more than just a sweet indulgence; they are packed full of protein that will keep you feeling full and satisfied long after your coffee break is over.

EXCELLENT SOURCE OF PROTEIN

OTHER AVAILABLE FLAVORS: vanilla, mocha

CASE PACK OUT: 40 display boxes per case and 5 packets per display box

SHELF LIFE: 12 months

Proti-Square® is a Registered Trademark of Bariatrix Nutrition Inc., Lachine, QC, Canada H8T 1B7.

Proti-Square®

mocha wafers

Nutrition Facts

Serving Size 2 wafers (41.9g)
Servings Per Container 5

Amount/Serving

Calories 200 Calories from Fat 80

% Daily Value*

Total Fat 9g **14%**

Saturated Fat 6g **30%**

Trans Fat 0g

Cholesterol 0mg **0%**

Sodium 85mg **4%**

Potassium 25mg **1%**

Total Carbohydrate 13g **4%**

Dietary Fiber Less than 1g **2%**

Sugars 6g

Protein 15g **25%**

Vitamin A 0%

Vitamin C 0%

Calcium 0%

Iron 2%

* Percent Daily Values are based on a 2,000 calorie diet. Your daily values may be higher or lower depending on your calorie needs.

Ingredients: Protein blend (milk protein isolate, hydrolyzed gelatin, whey protein isolate, pea protein isolate), **wheat** flour, fractionated palm and palm kernel oil, unsweetened chocolate, sugar, fructose, milk ingredients (skim milk powder, whole milk powder, butter fat), cocoa butter, soy lecithin, natural and artificial flavors, **soy** flour, water, sunflower oil, salt, sodium bicarbonate, sucralose (non-nutritive sweetener), corn flour.

Manufactured in a facility that

processes tree nuts

N511 - PD000310V02



Fluffy high-protein filling sandwiched between light and crispy wafers – Proti-Squares® are tasty²!

Our richest offerings, these delicious treats are more than just a sweet indulgence; they are packed full of protein that will keep you feeling full and satisfied long after your coffee break is over.

EXCELLENT SOURCE OF PROTEIN

OTHER AVAILABLE FLAVORS: chocolate, vanilla

CASE PACK OUT: 40 display boxes per case and 5 packets per display box

SHELF LIFE: 12 months

Proti-Square® is a Registered Trademark of Bariatric Nutrition Inc., Lachine, QC, Canada H8T 1B7.

Proti-Snax[®]

chocolate & caramel granola

Nutrition Facts

Serving Size 1 packet (30g)
Servings Per Container 7

Amount/Serving

Calories 130 Calories from fat 30

% Daily Value*

Total Fat 3g **5%**

Saturated Fat 0.5g **2%**

Trans Fat 0g

Cholesterol 0mg **0%**

Sodium 75mg **3%**

Potassium 135mg **4%**

Total Carbohydrate 15g **5%**

Dietary Fiber 2g **7%**

Sugars 5g

Protein 11g **21%**

Vitamin A 0%

Vitamin C 0%

Calcium 2%

Iron 10%

*Percent Daily Values are based on a 2,000 calorie diet. Your daily values may be higher or lower depending on your calorie needs.

Ingredients: whole grain rolled oats, **soy** protein isolate, **wheat** flour, sugar, wheat gluten, soybean oil, **pecans**, natural and artificial flavors, cocoa (processed with alkali), fructooligosaccharide, palm oil, molasses, whey protein concentrate (derived from milk), chocolate liquor, sucralose (non-nutritive sweetener), soy lecithin, sodium bicarbonate, salt, niacin, reduced iron, thiamine mononitrate, riboflavin, folic acid.

May contain traces of egg and sulphites.

O364



Our granola snacks are as versatile as they are tasty and satisfying. The single serving pouches make them the perfect snack on the go, but they're just as delicious sprinkled over yogurt or served with milk as a breakfast cereal.

OTHER AVAILABLE FLAVORS: chocolate & caramel, very berry

CASE PACK OUT: 24 display boxes per case and 7 packets per display box

SHELF LIFE: 12 months

Proti-Snax[®] is a Registered Trademark of Bariatrix Nutrition Inc., Lachine, QC, Canada H8T 1B7.

Proti-Snax[®]

very berry granola

Nutrition Facts

Serving Size 1 packet (30 g)
Servings Per Container 7

Amount/Serving

Calories 120 Calories from Fat 25

% Daily Value*

Total Fat 2.5g **4%**

Saturated Fat 0g **0%**

Trans Fat 0g

Cholesterol 0mg **0%**

Sodium 140mg **6%**

Potassium 90mg **3%**

Total Carbohydrate 14g **5%**

Dietary Fiber 1g **4%**

Sugars 6g

Protein 12g

Vitamin A 0%

Vitamin C 0%

Calcium 0%

Iron 8%

* Percent Daily Values are based on a 2,000 calorie diet. Your daily values may be higher or lower depending on your calorie needs:

Ingredients: Soy protein isolate, whole grain rolled oats, sugar, brown sugar, canola oil, tapioca starch, freeze dried strawberries, freeze dried cranberries, fructooligosaccharide, natural and artificial flavors, whey protein concentrate (milk), sucralose (non-nutritive sweetener).

Manufactured in a facility that processes egg, wheat, peanuts and tree nuts.

SKG365 - PD001270V01

Our granola snacks are as versatile as they are tasty and satisfying. The single serving pouches make them the perfect snack on the go, but they're just as delicious sprinkled over yogurt or served with milk as a breakfast cereal.

OTHER AVAILABLE FLAVORS: chocolate & caramel, very berry

CASE PACK OUT: 24 display boxes per case and 7 packets per display box

SHELF LIFE: 12 months

Proti-Snax[®] is a Registered Trademark of Bariatrix Nutrition Inc., Lachine, QC, Canada H8T 1B7.

Proti-Snax[®]

chocolate flavored soy snacks

Nutrition Facts

Serving Size: 1 packet (35 g)
Servings Per Container: 7

Amount/Serving

Calories 150 **Calories from fat** 60

% Daily Value*

Total Fat 6 g **9%**

Saturated Fat 4.5 g **25%**

Trans Fat 0 g

Cholesterol 0 mg **0%**

Sodium 170 mg **7%**

Potassium 150 mg **4%**

Total Carbohydrate 11 g **4%**

Dietary Fiber 1 g **4%**

Sugars 8 g

Protein 15 g **29%**

Vitamin A 0%

Vitamin C 0%

Calcium 20%

Iron 15%

* Percent Daily Values are based on a 2,000 calorie diet. Your daily values may be higher or lower depending on your calorie needs.

Ingredients: Protein blend (soy protein isolate, whey protein concentrate (derived from milk)), rice flour, tapioca starch, cocoa (processed with alkali), modified palm kernel oil, sugar, soy lecithin, calcium carbonate, natural and artificial flavors, sucralose (non-nutritive sweetener).

May contain wheat.

Manufactured on equipment that also processes peanuts, tree nuts, eggs, wheat and barley.

0331

Satisfy your sweet tooth and enjoy the benefits of soy with these sweet and crispy soy snacks. You'll ask yourself how anything so fun and tasty can be so good for you.

EXCELLENT SOURCE OF PROTEIN, EXCELLENT SOURCE OF CALCIUM, GOOD SOURCE OF IRON

OTHER AVAILABLE FLAVORS: peanut and caramel coated

CASE PACK OUT: 24 display boxes per case and 7 packets per display box

SHELF LIFE: 18 months

Proti-Snax[®] is a Registered Trademark of Bariatrix Nutrition Inc., Lachine, QC, Canada H8T 1B7.

Proti-Snax[®]

peanut & caramel coated soy snacks

Nutrition Facts	
Serving Size: 1 packet (35g)	
Servings Per Container 7	
Amount/Serving	
Calories 150	Calories from Fat 50
% Daily Value*	
Total Fat 6g	9%
Saturated Fat 4.5g	23%
Trans Fat 0g	
Cholesterol 5mg	2%
Sodium 200mg	8%
Potassium 135mg	4%
Total Carbohydrate 11g	4%
Dietary Fiber 1g	4%
Sugars 7g	
Protein 15g	30%
Vitamin A	0%
Vitamin C	0%
Calcium	15%
Iron	10%

* Percent Daily Values are based on a 2,000 calorie diet. Your daily values may be higher or lower depending on your calorie needs:

Ingredients: Protein blend (soy protein isolate, whey protein isolate [milk], reduced mineral whey powder), sugar, palm kernel and palm oil, partially defatted peanut flour, tapioca starch, rice flour, natural and artificial flavors, salt, calcium carbonate, soy lecithin, yogurt powder (cultured non-fat milk solids), citric acid, sucralose (non-nutritive sweetener).

Manufactured in a facility that processes wheat and tree nuts.
O337

Satisfy your sweet tooth and enjoy the benefits of soy with these sweet and crispy soy snacks. You'll ask yourself how anything so fun and tasty can be so good for you.

EXCELLENT SOURCE OF PROTEIN

OTHER AVAILABLE FLAVORS: chocolate

CASE PACK OUT: 24 display boxes per case and 7 packets per display box

SHELF LIFE: 18 months

Proti-Snax[®] is a Registered Trademark of Bariatrix Nutrition Inc., Lachine, QC, Canada H8T 1B7.

Proti-Snax[®]

chipotle barbecue zipper snacks

Nutrition Facts

Serving Size 1 packet (38g)
Servings Per Container 7

Amount/Serving

Calories 160 Calories from Fat 45

% Daily Value*

Total Fat 5g **8%**

Saturated Fat 0g **0%**

Trans Fat 0g

Cholesterol 0mg **0%**

Sodium 360mg **15%**

Potassium 95mg **3%**

Total Carbohydrate 13g **4%**

Dietary Fiber 2g **8%**

Sugars 1g

Protein 15g **29%**

Vitamin A 0%

Vitamin C 0%

Calcium 0%

Iron 10%

* Percent Daily Values are based on a 2,000 calorie diet. Your daily values may be higher or lower depending on your calorie needs.

Ingredients: Protein blend (soy protein isolate, pea protein isolate), potato flour, high oleic sunflower oil, soy flour, dehydrated vegetables (onion, tomato, garlic), potato starch, torula yeast, yeast extract, natural flavors, salt, calcium carbonate, color (paprika, turmeric), chipotle chili powder, potassium chloride, sodium gluconate, citric acid, silicon dioxide, spices.

Manufactured in a facility that processes milk, egg, wheat, peanuts and tree nuts.

SKZ321



Move over, potato chips! We've packed a lot of flavor into 38g of these super fun zipper snacks, not to mention the 15g of protein we've crammed into each packet.

EXCELLENT SOURCE OF PROTEIN, GOOD SOURCE OF VITAMIN C AND IRON

OTHER AVAILABLE FLAVORS: sour cream & fine herb

CASE PACK OUT: 12 display boxes per case and 7 packets per display box

SHELF LIFE: 18 months

Proti-Snax[®] is a Registered Trademark of Bariatrix Nutrition Inc., Lachine, QC, Canada H8T 1B7.

Proti-Snax[®]

sour cream & fine herb zipper snacks

Nutrition Facts

Serving Size 1 packet (38g)
Servings Per Container 7

Amount/Serving

Calories 160 Calories from Fat 45

% Daily Value*

Total Fat 5g **8%**

Saturated Fat 1g **5%**

Trans Fat 0g

Cholesterol 5mg **2%**

Sodium 360mg **15%**

Potassium 110mg **3%**

Total Carbohydrate 13g **4%**

Dietary Fiber 2g **8%**

Sugars 2g

Protein 15g **29%**

Vitamin A 0%

Vitamin C 0%

Calcium 0%

Iron 10%

* Percent Daily Values are based on a 2,000 calorie diet. Your daily values may be higher or lower depending on your calorie needs.

Ingredients: Protein blend (soy protein isolate, pea protein isolate), potato flour, high oleic sunflower oil, soy flour, sour cream (milk ingredients, bacterial culture, citric acid, tocopherols, silicon dioxide), dehydrated vegetables (onion, garlic), potato starch, torula yeast, yeast extract, sodium diacetate, salt, calcium carbonate, potassium chloride, sodium gluconate, spices, citric acid, parsley, silicon dioxide.

Manufactured in a facility that processes egg, wheat, peanuts and tree nuts.

SKZ322



Move over, potato chips! We've packed a lot of flavor into 38g of these super fun zipper snacks, not to mention the 15g of protein in each packet.

EXCELLENT SOURCE OF PROTEIN, GOOD SOURCE OF VITAMIN C, GOOD SOURCE OF IRON

OTHER AVAILABLE FLAVORS: chipotle barbecue

CASE PACK OUT: 12 display boxes per case and 7 packets per display box

SHELF LIFE: 18 months

Proti-Snax[®] is a Registered Trademark of Bariatrix Nutrition Inc., Lachine, QC, Canada H8T 1B7.

Proti-Max[®]

vanilla shake or pudding mix

Nutrition Facts

Serving Size 1 packet (26g)
Servings Per Container 7

Amount/Serving

Calories 100 Calories from Fat 15

% Daily Value*

Total Fat 1.5 g **2%**

Saturated Fat 0 g **0%**

Trans Fat 0 g

Cholesterol 5 mg **2%**

Sodium 70 mg **3%**

Potassium 190 mg **5%**

Total Carbohydrate 7 g **2%**

Dietary Fiber 0 g **0%**

Sugars 5 g

Protein 15g **30%**

Vitamin A 20% • Vitamin C 20%

Calcium 20% • Iron 20%

Vitamin D 20% • Vitamin E 20%

Vitamin K 20% • Thiamin 20%

Riboflavin 20% • Niacin 20%

Vitamin B6 20% • Folate 20%

Vitamin B12 20% • Biotin 20%

Pantothenate 20% • Phosphorus 20%

Iodine 20% • Magnesium 20%

Zinc 20% • Copper 20%

Manganese 20% • Chromium 20%

Molybdenum 20%

* Percent Daily Values are based on a 2,000 calorie diet. Your daily values may be higher or lower depending on your calorie needs.

Ingredients: Protein blend (calcium caseinate [milk], sodium caseinate), fructose, sunflower oil, natural and artificial flavors, maltodextrin, dipotassium phosphate, vitamin and mineral mix (ascorbic acid, ferrous fumarate, vitamin E as acetate, niacinamide, zinc oxide, copper gluconate, calcium d-pantothenate, manganese sulfate, pyridoxine, riboflavin, thiamin mononitrate, vitamin A as palmitate, chromium chloride, folic acid, d-biotin, potassium iodide, sodium molybdate, sodium selenite, phytonadione as vitamin K1, cholecalciferol as vitamin D3, cyanocobalamin as vitamin B12), salt, magnesium oxide, modified cellulose, sucralose (non-nutritive sweetener), monodiglycerides, tocopherols, silicon dioxide, beta-carotene (color).

Manufactured in a facility that processes soy, egg, wheat, peanuts and tree nuts.

PGM045

Delicious and simple to prepare, this rich and creamy pudding makes a perfect snack or dessert. Or, simply add more water to the mix to make a tasty drink! Full of high-quality and hunger-satisfying protein, our instant shake/pudding mixes have been a customer favorite for years!

OTHER AVAILABLE FLAVORS: strawberry, chocolate, chocolate mint, caramel caffe latte

CASE PACK OUT: 40 display boxes per case and 7 packets per display box

SHELF LIFE: 24 months

MIXING INSTRUCTIONS:

for drink: empty contents of one packet into a large glass (10oz) or blender, add 8oz of cold water and mix thoroughly.

for pudding: empty contents of one packet into a small bowl, add 3 to 4 oz of cold water and mix with a spoon until smooth.

Proti-Max[®] is a Registered Trademark of Bariatrix Nutrition Inc., Lachine, QC, Canada H8T 1B7.

54

 **Bariatrix Nutrition**

For more information on this or any of our innovative products, please contact one of our sales representatives.
Bariatrix Nutrition Corp., 308 Industrial Park Road., Georgia, Vermont, 05454 | (800) 468-3438 | www.bariatrix.com

Proti-Max[®]

strawberry shake or pudding mix

Nutrition Facts

Serving Size 1 packet (26g)
Servings Per Container 7

Amount/Serving	
Calories 100	Calories from Fat 15
% Daily Value*	
Total Fat 1.5 g	2%
Saturated Fat 0 g	0%
Trans Fat 0 g	
Cholesterol 5 mg	2%
Sodium 200 mg	8%
Potassium 200 mg	6%
Total Carbohydrate 7 g	2%
Dietary Fiber 0 g	0%
Sugars 4g	
Protein 15g	30%
Vitamin A 20%	• Vitamin C 20%
Calcium 20%	• Iron 20%
Vitamin D 20%	• Vitamin E 20%
Vitamin K 20%	• Thiamin 20%
Riboflavin 20%	• Niacin 20%
Vitamin B6 20%	• Folate 20%
Vitamin B12 20%	• Biotin 20%
Pantothenate 20%	• Phosphorus 20%
Iodine 20%	• Magnesium 20%
Zinc 20%	• Copper 20%
Manganese 20%	• Chromium 20%
Molybdenum 20%	

*Percent Daily Values are based on a 2,000 calorie diet. Your daily values may be higher or lower depending on your calorie needs:

Ingredients: Protein blend (calcium caseinate [milk], sodium caseinate), fructose, sunflower oil, maltodextrin, salt, color (beet juice powder, caramel), dipotassium phosphate, natural and artificial flavors, citric acid, malic acid, vitamin and mineral mix (ascorbic acid, ferrous fumarate, vitamin E as acetate, niacinamide, zinc oxide, copper gluconate, calcium d-pantothenate, manganese sulfate, pyridoxine, riboflavin, thiamin mononitrate, vitamin A as palmitate, chromium chloride, folic acid, d-biotin, potassium iodide, sodium molybdate, sodium selenite, phytonadione as vitamin K1, cholecalciferol as vitamin D3, cyanocobalamin as vitamin B12), magnesium oxide, modified cellulose, mono-diglycerides, tocopherols, sucralose (non-nutritive sweetener), silicon dioxide.

Manufactured in a facility that processes soy, egg, wheat, peanuts and tree nuts.

PGM046

Delicious and simple to prepare, this rich and creamy pudding makes a perfect snack or dessert. Or, simply add more water to the mix to make a tasty drink! Full of high-quality and hunger-satisfying protein, our instant shake/pudding mixes have been a customer favorite for years!

OTHER AVAILABLE FLAVORS: vanilla, chocolate, chocolate mint, caramel cafe latte

CASE PACK OUT: 40 display boxes per case and 7 packets per display box

SHELF LIFE: 24 months

MIXING INSTRUCTIONS:

for drink: empty contents of one packet into a large glass (10oz) or blender, add 8oz of cold water and mix thoroughly.

for pudding: empty contents of one packet into a small bowl, add 3 to 4 oz of cold water and mix with a spoon until smooth.

Proti-Max[®] is a Registered Trademark of Bariatrix Nutrition Inc., Lachine, QC, Canada H8T 1B7.

55

 Bariatrix Nutrition

For more information on this or any of our innovative products, please contact one of our sales representatives.
Bariatrix Nutrition Corp., 308 Industrial Park Road., Georgia, Vermont, 05454 | (800) 468-3438 | www.bariatrix.com

Proti-Max[®]

chocolate shake or pudding mix

Nutrition Facts

Serving Size 1 packet (27g)
Servings Per Container 7

Amount/Serving

Calories 100 Calories from Fat 15

% Daily Value*

Total Fat 1.5 g	2%
Saturated Fat 0 g	0%
Trans Fat 0 g	
Cholesterol 5 mg	2%
Sodium 200 mg	8%
Potassium 240 mg	7%
Total Carbohydrate 7 g	2%
Dietary Fiber 1 g	4%
Sugars 4g	
Protein 15g	30%

Vitamin A 20%	•	Vitamin C 20%
Calcium 20%	•	Iron 20%
Vitamin D 20%	•	Vitamin E 20%
Vitamin K 20%	•	Thiamin 20%
Riboflavin 20%	•	Niacin 20%
Vitamin B6 20%	•	Folate 20%
Vitamin B12 20%	•	Biotin 20%
Pantothenate 20%	•	Phosphorus 20%
Iodine 20%	•	Magnesium 20%
Zinc 20%	•	Copper 20%
Manganese 20%	•	Chromium 20%
Molybdenum 20%		

* Percent Daily Values are based on a 2,000 calorie diet. Your daily values may be higher or lower depending on your calorie needs:

Ingredients: Protein blend (calcium caseinate [milk], sodium caseinate), fructose, cocoa powder (processed with alkali), natural and artificial flavors, sunflower oil, maltodextrin, salt, dipotassium phosphate, vitamin and mineral mix (ascorbic acid, ferrous fumarate, vitamin E as acetate, niacinamide, zinc oxide, copper gluconate, calcium d-pantothenate, manganese sulfate, pyridoxine, riboflavin, thiamin mononitrate, vitamin A as palmitate, chromium chloride, folic acid, d-biotin, potassium iodide, sodium molybdate, sodium selenite, phytonadione as vitamin K1, cholecalciferol as vitamin D3, cyanocobalamin as vitamin B12), magnesium oxide, modified cellulose, silicon dioxide, mono-diglycerides, tocopherols, sucralose (non-nutritive sweetener), **soy** lecithin.

Manufactured in a facility that processes egg, wheat, peanuts and tree nuts.

PGM047

Delicious and simple to prepare, this rich and creamy pudding makes a perfect snack or dessert. Or, simply add more water to the mix to make a tasty drink! Full of high-quality and hunger-satisfying protein, our instant shake/pudding mixes have been a customer favorite for years!

OTHER AVAILABLE FLAVORS: vanilla, strawberry, chocolate mint, caramel cafe latte

CASE PACK OUT: 40 display boxes per case and 7 packets per display box

SHELF LIFE: 24 months

MIXING INSTRUCTIONS:

for drink: empty contents of one packet into a large glass (10oz) or blender, add 8oz of cold water and mix thoroughly.

for pudding: empty contents of one packet into a small bowl, add 3 to 4 oz of cold water and mix with a spoon until smooth.

Proti-Max[®] is a Registered Trademark of Bariatrix Nutrition Inc., Lachine, QC, Canada H8T 1B7.

56

 **Bariatrix Nutrition**

For more information on this or any of our innovative products, please contact one of our sales representatives.
Bariatrix Nutrition Corp., 308 Industrial Park Road., Georgia, Vermont, 05454 | (800) 468-3438 | www.bariatrix.com

Proti-Max[®]

chocolate mint shake or pudding mix

Nutrition Facts

Serving Size 1 packet (26g)
Servings Per Container 7

Amount/Serving

Calories 100 **Calories from Fat** 15

% Daily Value*

Total Fat 1.5g **2%**

Saturated Fat 0g **0%**

Trans Fat 0g

Cholesterol 5mg **2%**

Sodium 70mg **3%**

Potassium 230mg **7%**

Total Carbohydrate 6g **2%**

Dietary Fiber 1g **4%**

Sugars 3g

Protein 15g **30%**

Vitamin A 20% • Vitamin C 20%

Calcium 20% • Iron 20%

Vitamin D 20% • Vitamin E 20%

Vitamin K 20% • Thiamin 20%

Riboflavin 20% • Niacin 20%

Vitamin B6 20% • Folate 20%

Vitamin B12 20% • Biotin 20%

Pantothenate 20% • Phosphorus 20%

Iodine 20% • Magnesium 20%

Zinc 20% • Selenium 20%

Copper 20% • Manganese 20%

Chromium 20% • Molybdenum 20%

* Percent Daily Values are based on a 2,000 calorie diet. Your daily values may be higher or lower depending on your calorie needs.

Ingredients: Protein blend (calcium caseinate [milk], sodium caseinate), fructose, cocoa powder (processed with alkali), natural and artificial flavors, sunflower oil, maltodextrin, dipotassium phosphate, vitamin and mineral mix (ascorbic acid, ferrous fumarate, vitamin E as acetate, niacinamide, copper gluconate, zinc oxide, calcium d-pantothenate, manganese sulfate, pyridoxine HCl, riboflavin, thiamin mononitrate, vitamin A as palmitate, chromium chloride, folic acid, d-biotin, potassium iodide, sodium molybdate, sodium selenite, phytonadione as vitamin K1, cholecalciferol as vitamin D3, cyanocobalamin as vitamin B12), salt, sunflower lecithin, magnesium oxide, modified cellulose, sucralose (non-nutritive sweetener), mono-diglycerides, tocopherols, silicon dioxide, soy lecithin.

Manufactured in a facility that processes egg, wheat, peanuts and tree nuts.

PGM048

Delicious and simple to prepare, this rich and creamy pudding makes a perfect snack or dessert. Or, simply add more water to the mix to make a tasty drink! Full of high-quality and hunger-satisfying protein, our instant shake/pudding mixes have been a customer favorite for years!

OTHER AVAILABLE FLAVORS: vanilla, strawberry, chocolate, caramel caffe latte

CASE PACK OUT: 40 display boxes per case and 7 packets per display box

SHELF LIFE: 24 months

MIXING INSTRUCTIONS:

for drink: empty contents of one packet into a large glass (10oz) or blender, add 8oz of cold water and mix thoroughly.

for pudding: empty contents of one packet into a small bowl, add 3 to 4 oz of cold water and mix with a spoon until smooth.

Proti-Max[®] is a Registered Trademark of Bariatrix Nutrition Inc., Lachine, QC, Canada H8T 1B7.

57

 **Bariatrix Nutrition**

For more information on this or any of our innovative products, please contact one of our sales representatives.
Bariatrix Nutrition Corp., 308 Industrial Park Road., Georgia, Vermont, 05454 | (800) 468-3438 | www.bariatrix.com

Proti-Max[®]

caramel caffe latte shake or pudding mix

Nutrition Facts

Serving Size 1 packet (26g)
Servings Per Container 7

Amount/Serving

Calories 100 **Calories from Fat** 15

% Daily Value*

Total Fat 1.5g **2%**

Saturated Fat 0g **0%**

Trans Fat 0g

Cholesterol 5mg **2%**

Sodium 70mg **3%**

Potassium 170mg **5%**

Total Carbohydrate 7g **2%**

Dietary Fiber 0g **0%**

Sugars 4g

Protein 15g **30%**

Vitamin A 20% • Vitamin C 20%

Calcium 20% • Iron 20%

Vitamin D 20% • Vitamin E 20%

Vitamin K 20% • Thiamin 20%

Riboflavin 20% • Niacin 20%

Vitamin B6 20% • Folate 20%

Vitamin B12 20% • Biotin 20%

Pantothenate 20% • Phosphorus 20%

Iodine 20% • Magnesium 20%

Zinc 20% • Selenium 20%

Copper 20% • Manganese 20%

Chromium 20% • Molybdenum 20%

* Percent Daily Values are based on a 2,000 calorie diet. Your daily values may be higher or lower depending on your calorie needs.

Ingredients: Protein blend (calcium caseinate [milk], sodium caseinate), fructose, natural and artificial flavors, sunflower oil, decaffeinated coffee powder, maltodextrin, dipotassium phosphate, color (caramel, beta-carotene), vitamin and mineral mix (ascorbic acid, ferrous fumarate, vitamin E as acetate, niacinamide, copper gluconate, zinc oxide, calcium d-pantothenate, manganese sulfate, pyridoxine HCl, riboflavin, thiamin mononitrate, vitamin A as palmitate, chromium chloride, folic acid, d-biotin, potassium iodide, sodium molybdate, sodium selenite, phytonadione as vitamin K1, cholecalciferol as vitamin D3, cyanocobalamin as vitamin B12), sunflower lecithin, salt, modified cellulose, magnesium oxide, sucralose (non-nutritive sweetener), mono-diglycerides, tocopherols, silicon dioxide.

Manufactured in a facility that processes egg, soy, wheat, peanuts and tree nuts.

PGM049

Delicious and simple to prepare, this rich and creamy pudding makes a perfect snack or dessert. Or, simply add more water to the mix to make a tasty drink! Full of high-quality and hunger-satisfying protein, our instant shake/pudding mixes have been a customer favorite for years!

OTHER AVAILABLE FLAVORS: vanilla, strawberry, chocolate, chocolate mint

CASE PACK OUT: 40 display boxes per case and 7 packets per display box

SHELF LIFE: 24 months

MIXING INSTRUCTIONS:

for drink: empty contents of one packet into a large glass (10oz) or blender, add 8oz of cold water and mix thoroughly.

for pudding: empty contents of one packet into a small bowl, add 3 to 4 oz of cold water and mix with a spoon until smooth.

Proti-Max[®] is a Registered Trademark of Bariatrix Nutrition Inc., Lachine, QC, Canada H8T 1B7.

58

 **Bariatrix Nutrition**

For more information on this or any of our innovative products, please contact one of our sales representatives.
Bariatrix Nutrition Corp., 308 Industrial Park Road., Georgia, Vermont, 05454 | (800) 468-3438 | www.bariatrix.com

Proti-15[®]

maple brown sugar oatmeal instant hot cereal mix



Nutrition Facts

Serving Size 1 packet 1.1 OZ (32 g)
Servings Per Container 6

Amount/Serving	
Calories 120	Calories from fat 20
% Daily Value*	
Total Fat 2 g	3%
Saturated Fat 0.5 g	3%
Trans Fat 0 g	
Cholesterol 0 mg	0%
Sodium 65 mg	3%
Potassium 280 mg	8%
Total Carbohydrate 10 g	3%
Dietary Fiber 1 g	4%
Sugars 0g	
Protein 15g	30%
Vitamin A	0%
Vitamin C	0%
Calcium	35%
Iron	4%

* Percent Daily Values are based on a 2,000 calorie diet. Your daily values may be higher or lower depending on your calorie needs.

Ingredients: Protein blend (milk protein isolate, sodium caseinate), oat flakes (contains wheat), natural and artificial flavors, sunflower oil, maltodextrin, potassium phosphate, salt, caramel color, monodiglycerides, tocopherols, sucralose (non-nutritive sweetener), soy lecithin.

Manufactured in a facility that processes egg, sesame and tree nuts.

O367

Start the day off right with a Bariatrix Classic. Our hot cereal mixes provide all the great benefits of regular oatmeal plus a protein blend that keeps hunger in check longer – with the added benefits of low glycemic carbohydrates. A satisfying bowl of warm and creamy oatmeal takes only seconds to prepare in the microwave and is even better topped with fresh fruit.

EXCELLENT SOURCE OF PROTEIN, EXCELLENT SOURCE OF CALCIUM, LOW FAT, CHOLESTEROL FREE

OTHER AVAILABLE FLAVORS: classic, apple cinnamon

CASE PACK OUT: 24 display boxes per case and 6 packets per display box

SHELF LIFE: 36 months

DIRECTIONS: Empty contents of one packet in a large microwaveable bowl. Add 4 oz (115 mL) of cold water. Mix very well and cook on HIGH for 3 minutes. Stir, continue to heat another 30 seconds. Let stand before eating.

Proti-15[®] is a Registered Trademark of Bariatrix Nutrition Inc., Lachine, QC, Canada H8T 1B7.

Proti-15[®]

apple cinnamon oatmeal instant hot cereal mix



Nutrition Facts

Serving Size: 1 packet 1.1 OZ (31 g)
Servings Per Container: 6

Amount/Serving	
Calories 120	Calories from fat 15
% Daily Value*	
Total Fat 2 g	3%
Saturated Fat 0 g	0%
Trans Fat 0g	
Cholesterol 0mg	0%
Sodium 75 mg	3%
Potassium 280 mg	8%
Total Carbohydrate 10 g	3%
Dietary Fiber 1 g	4%
Sugars 2 g	
Protein 15 g	30%
Vitamin A	0%
Vitamin C	0%
Calcium	35%
Iron	4%

* Percent Daily Values are based on a 2,000 calorie diet. Your daily values may be higher or lower depending on your calorie needs.

Ingredients: Protein blend (milk protein isolate, sodium caseinate), oat flakes (contains wheat), apples, sunflower oil, maltodextrin, natural and artificial flavors, seasoning (cinnamon, honey powder, sugar), potassium phosphate, salt, caramel color, monodiglycerides, tocopherols, sucralose (non-nutritive sweetener), calcium stearate, sulfites, soy lecithin.

Manufactured in a facility that processes egg, sesame and tree nuts.

O366

Start the day off right with a Bariatrix Classic. Our hot cereal mixes provide all the great benefits of regular oatmeal plus a protein blend that keeps hunger in check longer – with the added benefits of low glycemic carbohydrates. A satisfying bowl of warm and creamy oatmeal takes only seconds to prepare in the microwave and is even better topped with fresh fruit.

EXCELLENT SOURCE OF PROTEIN, EXCELLENT SOURCE OF CALCIUM, LOW FAT, CHOLESTEROL FREE

OTHER AVAILABLE FLAVORS: classic, maple and brown sugar

CASE PACK OUT: 24 display boxes per case and 6 packets per display box

SHELF LIFE: 36 months

DIRECTIONS: Empty contents of one packet in a large microwaveable bowl. Add 4 oz (115 mL) of cold water. Mix very well and cook on HIGH for 3 minutes. Stir, continue to heat another 30 seconds. Let stand before consuming.

Proti-15[®] is a Registered Trademark of Bariatrix Nutrition Inc., Lachine, QC, Canada H8T 1B7.

Proti-15[®]

strawberry banana gelatin dessert mix

Nutrition Facts	
Serving Size 1 packet (21g)	
Servings Per Package 7	
Amount/Serving	
Calories 70	Calories from Fat 0
% Daily Value*	
Total Fat 0g	0%
Saturated Fat 0g	0%
Trans Fat 0g	
Cholesterol 0mg	0%
Sodium 30mg	1%
Potassium 50mg	1%
Total Carbohydrate 4g	1%
Dietary Fiber 2g	8%
Sugars 0g	
Protein 15g	
Vitamin A	0%
Vitamin C	0%
Calcium	0%
Iron	0%

* Percent Daily Values are based on a 2,000 calorie diet. Your daily values may be higher or lower depending on your calorie needs.

Ingredients: Hydrolyzed gelatin, gelatin, fructooligosaccharide, citric acid, color (beet juice powder, turmeric extract), pectin, natural and artificial flavors, potassium citrate, sucralose (non-nutritive sweetener), tricalcium phosphate.

Manufactured in a facility that processes soy, egg, milk, wheat, peanuts, sesame and tree nuts.

1350



Our fruity gelatin dessert offers a delicious treat with a high protein base. The perfect answer to sweet cravings without excessive fat and carbohydrates!

FAT-FREE, CHOLESTEROL-FREE

CASE PACK OUT: 40 display boxes per case and 7 packets per display box

SHELF LIFE: 36 months

DIRECTIONS: Empty contents of one packet into a small bowl add 2 oz (60 ml) of boiling water and stir until dissolved. Add 2 oz (60 ml) of cold water, mix well and chill in refrigerator approximately 90 minutes.

Proti-15[®] is a Registered Trademark of Bariatric Nutrition Inc., Lachine, QC, Canada H8T 1B7.

VHP

very high protein chocolate drink mix



Nutrition Facts

Serving Size 1 packet (68.5g)
Servings Per Container 7

Amount/Serving	
Calories 250	Calories from fat 25
% Daily Value*	
Total Fat 2.5g	4%
Saturated Fat 1g	5%
Trans Fat 0g	
Cholesterol 25mg	8%
Sodium 400mg	17%
Potassium 840mg	24%
Total Carbohydrate 22g	7%
Dietary Fiber 3g	12%
Sugars 10g	
Protein 35g	70%
Vitamin A 50 %	• Vitamin C 60 %
Calcium 60 %	• Iron 45 %
Vitamin D 60 %	• Vitamin E 60 %
Vitamin K 50 %	• Thiamin 60 %
Riboflavin 80 %	• Niacin 100 %
Vitamin B6 60 %	• Folate 50 %
Vitamin B12 50 %	• Biotin 60 %
Pantothenate 40 %	• Phosphorus 40 %
Iodine 30 %	• Magnesium 45 %
Zinc 40 %	• Copper 50 %
Manganese 50 %	• Chromium 40 %
Molybdenum 80 %	

* Percent Daily Values are based on a 2,000 calorie diet. Your daily values may be higher or lower depending on your calorie needs.

Ingredients: Protein blend (milk protein isolate, calcium caseinate, whey protein concentrate, egg white powder), fructose, maltodextrin, alkalized cocoa, soy lecithin, xanthan gum, vitamin and mineral blend (vitamin A as palmitate, cholecalciferol, vitamin E as acetate, biotin, folic acid, niacinamide, calcium pantothenate, thiamine mononitrate, cyanocobalamin, riboflavin, pyridoxine hydrochloride, dicalcium phosphate, chromium chloride, copper gluconate, potassium iodide, reduced iron, magnesium carbonate, manganese sulfate, sodium molybdate, zinc sulfate), dipotassium phosphate, potassium chloride, natural flavors, salt, potassium citrate, sucralose (non-nutritive sweetener), silicon dioxide, beta carotene (color). Contains 44mg of Choline

L920

Our VHP (Very High Protein) meal replacement drink mixes provide 35 grams of quality protein and have only 3.5 grams of fat per serving. They're also fortified with vitamins and minerals to give you an added boost and the flavors can't be beat!

EXCELLENT SOURCE OF PROTEIN, EXCELLENT SOURCE OF VITAMINS A, C, D, E, K, B6 AND B12. EXCELLENT SOURCE OF CALCIUM, IRON, THIAMIN, RIBOFLAVIN, NIACIN, FOLATE, BIOTIN, PANTOTHENIC ACID, PHOSPHORUS, IODINE, MAGNESIUM, ZINC, COPPER, MANGANESE, CHROMIUM, MOLYBDENUM AND CHLORIDE, GOOD SOURCE OF FIBER

OTHER AVAILABLE FLAVORS: strawberry, vanilla

CASE PACK OUT: 12 display boxes per case and 7 packets per display box

SHELF LIFE: 24 months

MIXING INSTRUCTIONS: Empty contents of one packet into a blender or shaker bottle. Add 2 cups of cold water and blend at high speed or shake for 30 seconds.

VHP

very high protein vanilla drink mix



Nutrition Facts

Serving Size 1 packet (67g)
Servings Per Container 7

Amount/Serving	
Calories 260	Calories from fat 30
% Daily Value*	
Total Fat 3g	5%
Saturated Fat 1g	5%
Trans Fat 0g	
Cholesterol 40mg	13%
Sodium 320mg	13%
Potassium 690mg	20%
Total Carbohydrate 21g	7%
Dietary Fiber 1g	4%
Sugars 10g	
Protein 35g	70%
Vitamin A 70 %	• Vitamin C 60 %
Calcium 60 %	• Iron 40 %
Vitamin D 60 %	• Vitamin E 60 %
Vitamin K 50 %	• Thiamin 60 %
Riboflavin 70 %	• Niacin 100 %
Vitamin B6 60 %	• Folate 50 %
Vitamin B12 50 %	• Biotin 60 %
Pantothenate 40 %	• Phosphorus 40 %
Iodine 25 %	• Magnesium 35 %
Zinc 35 %	• Copper 40 %
Manganese 50 %	• Chromium 40 %
Molybdenum 80 %	• Chloride 15 %

* Percent Daily Values are based on a 2,000 calorie diet. Your daily values may be higher or lower depending on your calorie needs.

Ingredients: Protein blend (calcium caseinate, whey protein concentrate, **milk** protein isolate, **egg** white powder), fructose, maltodextrin, vitamin and mineral blend (vitamin A as palmitate, cholecalciferol, vitamin E as acetate, biotin, folic acid, niacinamide, calcium pantothenate, thiamine mononitrate, cyanocobalamin, riboflavin, pyridoxine hydrochloride, dicalcium phosphate, chromium chloride, copper gluconate, potassium iodide, reduced iron, magnesium carbonate, manganese sulfate, sodium molybdate, zinc sulfate), sunflower oil, sodium caseinate, mono- and diglycerides, **soy** lecithin, dipotassium phosphate, potassium chloride, cellulose, carrageenan, guar gum, xanthan gum, natural and artificial flavors, salt, potassium citrate, silicon dioxide, sucralose (non-nutritive sweetener), tocopherol, beta-carotene (color). Contains 44 mg of Choline

L921

Our VHP (Very High Protein) meal replacement drink mixes provide 35 grams of quality protein and have only 3.5 grams of fat per serving. They're also fortified with vitamins and minerals to give you an added boost and the flavors can't be beat!

EXCELLENT SOURCE OF PROTEIN, EXCELLENT SOURCE OF VITAMINS A, C, D, E, K, B6 AND B12. EXCELLENT SOURCE OF CALCIUM, IRON, THIAMIN, RIBOFLAVIN, NIACIN, FOLATE, BIOTIN, PANTOTHENIC ACID, PHOSPHORUS, IODINE, MAGNESIUM, ZINC, COPPER, MANGANESE, CHROMIUM, MOLYBDENUM AND CHLORIDE

OTHER AVAILABLE FLAVORS: strawberry, chocolate

CASE PACK OUT: 12 display boxes per case and 7 packets per display box

SHELF LIFE: 24 months

MIXING INSTRUCTIONS: Empty contents of one packet into a blender or shaker bottle. Add 2 cups of cold water and blend at high speed or shake for 30 seconds.

VHP

very high protein strawberry drink mix



Nutrition Facts

Serving Size 1 packet (67g)
Servings Per Container 7

Amount/Serving	
Calories 250	Calories from fat 30
% Daily Value*	
Total Fat 3g	5%
Saturated Fat 1g	5%
Trans Fat 0g	
Cholesterol 40mg	13%
Sodium 320mg	13%
Potassium 690mg	20%
Total Carbohydrate 21g	7%
Dietary Fiber 1g	4%
Sugars 11g	
Protein 35g	70%
Vitamin A 40 %	• Vitamin C 60 %
Calcium 60 %	• Iron 40 %
Vitamin D 60 %	• Vitamin E 60 %
Vitamin K 50 %	• Thiamin 60 %
Riboflavin 70 %	• Niacin 100 %
Vitamin B6 60 %	• Folate 50 %
Vitamin B12 50 %	• Biotin 60 %
Pantothenate 40 %	• Phosphorus 40 %
Iodine 25 %	• Magnesium 35 %
Zinc 35 %	• Selenium 0 %
Copper 40 %	• Manganese 50 %
Chromium 40 %	• Molybdenum 80 %
Chloride 15 %	

* Percent Daily Values are based on a 2,000 calorie diet. Your daily values may be higher or lower depending on your calorie needs.

Ingredients: Protein blend (calcium caseinate, whey protein concentrate, **milk** protein isolate, **egg** white powder), fructose, maltodextrin, sunflower oil, sodium caseinate, mono- and diglycerides, tocopherol, **soy** lecithin, vitamin and mineral blend (vitamin A as palmitate, vitamin D3 as cholecalciferol, vitamin E as acetate, biotin, folic acid, niacinamide, calcium pantothenate, thiamine mononitrate, vitamin B12 as cyanocobalamin, riboflavin, vitamin B6 as pyridoxine hydrochloride, dicalcium phosphate, chromium chloride, copper gluconate, potassium iodide, reduced iron, magnesium carbonate, manganese sulfate, sodium molybdate, zinc sulfate), dipotassium phosphate, potassium chloride, citric acid, natural and artificial flavors, xanthan gum, salt, potassium citrate, cellulose, guar gum, carrageenan, beet extract color, silicon dioxide, sucralose (non-nutritive sweetener). Contains 44 mg of Choline.

L919

Our VHP (Very High Protein) meal replacement drink mixes provide 35 grams of quality protein and have only 3.5 grams of fat per serving. They're also fortified with vitamins and minerals to give you an added boost and the flavors can't be beat!

EXCELLENT SOURCE OF PROTEIN, EXCELLENT SOURCE OF VITAMINS A, C, D, E, K, B6 AND B12. EXCELLENT SOURCE OF CALCIUM, IRON, THIAMIN, RIBOFLAVIN, NIACIN, FOLATE, BIOTIN, PANTOTHENIC ACID, PHOSPHORUS, IODINE, MAGNESIUM, ZINC, COPPER, MANGANESE, CHROMIUM, MOLYBDENUM AND CHLORIDE

OTHER AVAILABLE FLAVORS: chocolate, vanilla

CASE PACK OUT: 12 display boxes per case and 7 packets per display box

SHELF LIFE: 24 months

MIXING INSTRUCTIONS: Empty contents of one packet into a blender or shaker bottle. Add 2 cups of cold water and blend at high speed or shake for 30 seconds.

Nutri-15 fast[®]

cream of tomato meal replacement soup mix

Nutrition Facts

Serving Size 1 packet (44g)

Amount/Serving

Calories 160 Calories from fat 15

% Daily Value*

Total Fat 2g **3%**

Saturated Fat 0g **0%**

Trans Fat 0g

Cholesterol Less than 5mg **<2%**

Sodium 520mg **22%**

Potassium 650mg **19%**

Total Carbohydrate 19g **6%**

Dietary Fiber 1g **4%**

Sugars 3g

Protein 15g **30%**

Vitamin A 25% • Vitamin C 50%

Calcium 35% • Iron 25%

Vitamin D 25% • Vitamin E 30%

Vitamin K 25% • Thiamin 35%

Riboflavin 35% • Niacin 25%

Vitamin B6 35% • Folate 25%

Vitamin B12 20% • Biotin 25%

Pantothenate 25% • Phosphorus 25%

Iodine 25% • Magnesium 25%

Zinc 30% • Selenium 35%

Copper 20% • Manganese 20%

Chromium 20% • Molybdenum 20%

Chloride 20%

* Percent Daily Values are based on a 2,000 calorie diet. Your daily values may be higher or lower depending on your calorie needs:

Ingredients: Protein blend (calcium caseinate, **milk** protein concentrate, sodium caseinate), maltodextrin, dehydrated vegetables (tomato, onion, garlic), sunflower oil, mono- and diglycerides, tapioca starch, vitamins and minerals (ascorbic acid, biotin, pantothenic acid, folic acid, niacinamide, pyridoxine hydrochloride, riboflavin, thiamine, vitamin A as palmitate, cyanocobalamin, cholecalciferol, tocopheryl acetate, phytonadione, choline citrate, chromium chloride, ferrous amino acid chelate, copper gluconate, magnesium phosphate, manganese sulfate, sodium molybdate, potassium iodide, zinc oxide). Contains 2 percent or less of: salt, colors (beet juice, caramel, lycopene, paprika, annatto, canthaxanthin), hydrolyzed **soy** and corn proteins (monosodium glutamate), xanthan gum, guar gum, sodium alginate, natural and artificial flavors, potassium citrate, potassium chloride, calcium lactate, potassium bicarbonate, dipotassium phosphate, citric acid, spice, silicon dioxide, disodium inosinate and guanylate, sucralose (non nutritive sweetener), soy lecithin.

May contain wheat and egg

M500

The Nutri-15[®]fast soup mixes contain 15 grams of protein, 19 grams of carbohydrates, and 160 calories per serving. With added fiber and 25% of the Daily Values (DV) of all vitamins and minerals, NutriFast can easily be used as part of a full fast diet. Simply mix up your soup to enjoy a delicious, nutritionally complete meal replacement.

EXCELLENT SOURCE OF PROTEIN, LOW-FAT, LOW CHOLESTEROL, EXCELLENT SOURCE OF VITAMINS A, C, D, E, K B6 AND B12, EXCELLENT SOURCE OF THIAMIN, RIBOFLAVIN, NIACIN, FOLATE, BIOTIN, PANTOTHENIC ACID, PHOSPHORUS, IODINE, MAGNESIUM, ZINC, COPPER, MANGANESE, CHROMIUM, MOLYBDENUM AND CHLORIDE.

OTHER AVAILABLE FLAVORS: cream of chicken

CASE PACK OUT: 12 display boxes per case and 7 packets per display box

SHELF LIFE: 24 months

DIRECTIONS: Empty contents of one packet into a large cup or bowl, add 6 - 8 OZ of hot water and stir vigorously until dissolved.

Nutri-15[®] is a Registered Trademark of Bariatrix Nutrition Inc., Lachine, QC, Canada H8T 1B7.

Nutri-15 fast[®]

cream of chicken meal replacement soup mix

Nutrition Facts	
Serving Size 1 packet (43g)	
Amount/Serving	
Calories 160	Calories from fat 15
% Daily Value*	
Total Fat 2g	3%
Saturated Fat 0g	0%
Trans Fat 0g	
Cholesterol Less than 5mg	<2%
Sodium 550mg	23%
Potassium 640mg	18%
Total Carbohydrate 19g	6%
Dietary Fiber 1g	4%
Sugars 1g	
Protein 15g	30%
Vitamin A 25 %	• Vitamin C 35 %
Calcium 30 %	• Iron 25 %
Vitamin D 25 %	• Vitamin E 25 %
Vitamin K 25 %	• Thiamin 35 %
Riboflavin 35 %	• Niacin 25 %
Vitamin B6 35 %	• Folate 25 %
Vitamin B12 20 %	• Biotin 25 %
Pantothenate 25 %	• Phosphorus 25 %
Iodine 25 %	• Magnesium 20 %
Zinc 30 %	• Selenium 35 %
Copper 20 %	• Manganese 20 %
Chromium 20 %	• Molybdenum 20 %
Chloride 15 %	

* Percent Daily Values are based on a 2,000 calorie diet. Your daily values may be higher or lower depending on your calorie needs.

Ingredients: Protein blend (calcium caseinate, **milk** protein concentrate, sodium caseinate), maltodextrin, sunflower oil, mono- and diglycerides, tapioca starch, natural and artificial flavors (**eggs**), vitamins and minerals (ascorbic acid, biotin, pantothenic acid, folic acid, niacinamide, pyridoxine hydrochloride, riboflavin, thiamine, vitamin A as palmitate, cyanocobalamin, cholecalciferol, tocopheryl acetate, phytonadione, choline citrate, chromium chloride, ferrous amino acid chelate, copper gluconate, magnesium phosphate, manganese sulfate, sodium molybdate, potassium iodide, zinc oxide), hydrolyzed corn and **wheat** proteins. Contains 2 percent or less of: dehydrated vegetables (onion, leek), salt, potassium citrate, potassium chloride, yeast extract, potassium chloride, xanthan gum, guar gum, sodium alginate, potassium bicarbonate, dipotassium phosphate, spice, silicon dioxide, color (turmeric), disodium inosinate and guanylate, parsley flakes, **soy** lecithin.

May contain wheat and egg.

M501

The Nutri-15[®]fast soup mixes contain 15 grams of protein, 19 grams of carbohydrates, and 160 calories per serving. With added fiber and 25% of the Daily Values (DV) of all vitamins and minerals, NutriFast can easily be used as part of a full fast diet. Simply mix up your soup to enjoy a delicious, nutritionally complete meal replacement.

EXCELLENT SOURCE OF PROTEIN, LOW FAT, LOW CHOLESTEROL, EXCELLENT SOURCE OF VITAMINS A, C, D, E, K, B6, B12, THIAMIN, RIBOFLAVIN, NIACIN, FOLATE, BIOTIN, PANTOTHENIC ACID, PHOSPHORUS, IODINE, MAGNESIUM, ZINC, COPPER, MANGANESE, CHROMIUM, MOLYBDENUM AND CHLORIDE

OTHER AVAILABLE FLAVORS: cream of tomato

CASE PACK OUT: 12 display boxes per case and 7 packets per display box

SHELF LIFE: 24 months

DIRECTIONS: Empty contents of one packet into a large cup or bowl, add 6 - 8 OZ of hot water and stir vigorously until dissolved.

Nutri-15[®] is a Registered Trademark of Bariatrix Nutrition Inc., Lachine, QC, Canada H8T 1B7.

Proti-Snax®

toast parisien rusk bread

Nutrition Facts	
Serving Size: 1/2 packet (30g)	
Servings Per Container 6	
Amount/Serving	
Calories 110	Calories from Fat 20
% Daily Value*	
Total Fat 2.5g	4%
Saturated Fat 0.5g	3%
Trans Fat 0g	
Cholesterol 0mg	0%
Sodium 160mg	7%
Potassium 180mg	5%
Total Carbohydrate 10g	3%
Dietary Fiber 5g	20%
Sugars 1g	
Protein 15g	15%
Vitamin A	0%
Vitamin C	0%
Calcium	0%
Iron	2%

* Percent Daily Values are based on a 2,000 calorie diet. Your daily values may be higher or lower depending on your calorie needs.

Ingredients: Protein blend (**wheat** protein isolate, whey protein isolate [**milk**]), water, wheat flour, polydextrose, inulin, **egg**-white powder, yeast, wheat gluten, sunflower oil, diacetyl tartaric acid esters of mono-diglycerides (DATEM), dextrose, natural and artificial flavors, dipotassium phosphate, **soy** lecithin, salt.

N300



Developed and baked in partnership with master bakers in the South of France, our mini rusk bread is made using only the finest flours and traditional French methods, but with all the benefits of additional high-quality protein.

Makes the perfect accompaniment to a Proti-Meal® quick fix meal or a Proti-15® soup!

GOOD SOURCE OF PROTEIN, EXCELLENT SOURCE OF FIBER, LOW FAT, LOW CHOLESTEROL

CASE PACK OUT: 12 display boxes per case and 3 packets per display box

SHELF LIFE: 12 months

Proti-Snax® is a Registered Trademark of Bariatrix Nutrition Inc., Lachine, QC, Canada H8T 1B7.

Proti Meal[®]

vegetable chili quick fix meal mix

Nutrition Facts

Serving Size 1 packet (33 g)
Servings Per Container 4

Amount/Serving

Calories 120 Calories from fat 25

% Daily Value*

Total Fat 3 g **5%**

Saturated Fat 0 g **0%**

Trans Fat 0g

Cholesterol 0 mg **0%**

Sodium 490 mg **20%**

Potassium 340 mg **10%**

Total Carbohydrate 13 g **4%**

Dietary Fiber 4 g **16%**

Sugars 3 g

Protein 12 g **21%**

Vitamin A 4%

Vitamin C 8%

Calcium 6%

Iron 10%

* Percent Daily Values are based on a 2,000 calorie diet. Your daily values may be higher or lower depending on your calorie needs.



Ingredients: Textured **soy** protein, dehydrated vegetables (red beans, tomatoes, onions, red bell peppers and garlic), modified corn starch, hydrolyzed vegetable proteins (**wheat**, soy and corn), sunflower oil, sugar, spices, guar gum, citric acid, silicon dioxide, salt, autolyzed yeast extract, caramel color (**sulfites**).

Manufactured in a facility that processes egg, soy, sesame and tree nuts.

W424

Bariatric Quick Fix hot meal entrees offer a unique savory option. These hearty vegetarian meal mixes are so satisfying, even the most committed carnivores won't miss the meat. Easy to prepare single serving portions are the next best thing to home made!

EXCELLENT SOURCE OF PROTEIN, EXCELLENT SOURCE OF CALCIUM, GOOD SOURCE OF FIBER, GOOD SOURCE OF IRON, LOW FAT

OTHER AVAILABLE FLAVORS: vegetable spaghetti bolognese, potato stew

CASE PACK OUT: 24 display boxes per case and 4 packets per display box

SHELF LIFE: 36 months

DIRECTIONS: Empty the contents of 1 packet into a small saucepan, add 2/3 cup (170ml) hot or boiling water. Bring to a boil and simmer 5-10 minutes. In a microwave, empty contents of one packet into a microwave safe dish, add 2/3 cup (170ml) boiling water and microwave on high for 2-3 minutes, stirring occasionally.

Proti Meal[®] is a Registered Trademark of Bariatric Nutrition Inc., Lachine, QC, Canada H8T 1B7.

Proti Meal®

vegetable spaghetti bolognese quick fix meal mix

Nutrition Facts

Serving Size 1 packet (43 g)
Servings Per Container 4

Amount/Serving

Calories 150 **Calories from fat** 25

% Daily Value*

Total Fat 2.5 g **4%**

Saturated Fat 0 g **0%**

Trans Fat 0 g

Cholesterol 10 mg **3%**

Sodium 930 mg **39%**

Potassium 410 mg **12%**

Total Carbohydrate 21 g **7%**

Dietary Fiber 4 g **16%**

Sugars 5 g

Protein 12 g **22%**

Vitamin A 2%

Vitamin C 10%

Calcium 10%

Iron 10%

* Percent Daily Values are based on a 2,000 calorie diet. Your daily values may be higher or lower depending on your calorie needs.

Ingredients: Textured **soy** protein, egg noodles (durum flour, water, **egg** yolks), dehydrated vegetables (tomatoes, onions, mushrooms, garlic), sugar, modified corn starch, hydrolyzed vegetable proteins (**wheat**, corn and soy), sunflower oil, salt, soy fibers, spices, caramel color (**sulfites**), annatto extract, natural flavors.

May contain milk.

W426



Bariatrx Quick Fix hot meal entrees offer a unique savory option. These hearty vegetarian meal mixes are so satisfying, even the most committed carnivores won't miss the meat. Easy to prepare single serving portions are the next best thing to home made!

EXCELLENT SOURCE OF PROTEIN, EXCELLENT SOURCE OF FIBER, GOOD SOURCE OF CALCIUM, GOOD SOURCE OF IRON, GOOD SOURCE OF VITAMIN A, LOW FAT, LOW CHOLESTEROL

OTHER AVAILABLE FLAVORS: vegetable chili, potato stew

CASE PACK OUT: 24 display boxes per case and 4 packets per display box

SHELF LIFE: 36 months

DIRECTIONS: Empty the contents of 1 packet into a small saucepan, add 2/3 cup (170ml) hot or boiling water. Bring to a boil and simmer 5-10 minutes. In a microwave, empty contents of one packet into a microwave safe dish, add 2/3 cup (170ml) boiling water and microwave on high for 2-3 minutes, stirring occasionally.

Proti Meal® is a Registered Trademark of Bariatrx Nutrition Inc., Lachine, QC, Canada H8T 1B7.

Proti Meal[®]

potato stew quick fix meal mix

Nutrition Facts

Serving Size 1 packet (36g)
Servings Per Container 7

Amount/Serving

Calories 120 **Calories from Fat** 15

% Daily Value*

Total Fat 1.5g **2%**

Saturated Fat 0g **0%**

Trans Fat 0g

Cholesterol 0mg **0%**

Sodium 420mg **18%**

Potassium 380mg **11%**

Total Carbohydrate 15g **5%**

Dietary Fiber 4g **16%**

Sugars 1g

Protein 15g **27%**

Vitamin A 0%

Vitamin C 0%

Calcium 6%

Iron 15%

* Percent Daily Values are based on a 2,000 calorie diet. Your daily values may be higher or lower depending on your calorie needs.



Ingredients: Protein blend (soy protein concentrate, pea protein isolate), dehydrated vegetables (potato, onion, carrot, garlic), yeast extract, salt, sunflower oil, caramel color, natural flavors, spices, guar gum.

Manufactured in a facility that processes egg, milk, peanuts and tree nuts.

MLW423 - PD001260V01

Bariatrx Quick Fix hot meal entrees offer a unique savory option. These hearty vegetarian meal mixes are so satisfying, even the most committed carnivores won't miss the meat. Easy to prepare single serving portions are the next best thing to home made!

EXCELLENT SOURCE OF PROTEIN, GOOD SOURCE OF FIBER, GOOD SOURCE OF IRON

OTHER AVAILABLE FLAVORS: vegetable chili, vegetable spaghetti bolognese

CASE PACK OUT: 24 display boxes per case and 7 packets per display box

SHELF LIFE: 36 months

DIRECTIONS:

Stove top: Empty the contents of one packet into a small saucepan. Add 170 ml (2/3 cup) of cold water. Cook on medium for 3 minutes or until desired texture.

Microwave : Empty the contents of one packet into a bowl. Add 170 ml (2/3 cup) of cold water; mix well. Cook on high for 3 minutes.

Proti Meal[®] is a Registered Trademark of Bariatrx Nutrition Inc., Lachine, QC, Canada H8T 1B7.

Proti-VLC

smoothie base mix

Nutrition Facts

Serving Size 1 packet (31g)
Servings Per Container 7

Amount/Serving	
Calories 110	Calories from Fat 15
% Daily Value*	
Total Fat 1.5g	2%
Saturated Fat 0g	0%
Trans Fat 0g	
Cholesterol 5mg	2%
Sodium 400mg	17%
Potassium 600mg	17%
Total Carbohydrate 2g	1%
Dietary Fiber 2g	8%
Sugars 0 g	
Protein 20g	40%

Vitamin A 20%	•	Vitamin C 20%
Calcium 20%	•	Iron 20%
Vitamin D 20%	•	Vitamin E 20%
Vitamin K 20%	•	Thiamin 20%
Riboflavin 20%	•	Niacin 20%
Vitamin B6 20%	•	Folate 20%
Vitamin B12 20%	•	Biotin 20%
Pantothenate 20%	•	Phosphorus 20%
Iodine 20%	•	Magnesium 20%
Zinc 20%	•	Selenium 20%
Copper 20%	•	Manganese 20%
Chromium 20%	•	Molybdenum 20%

* Percent Daily Values are based on a 2,000 calorie diet. Your daily values may be higher or lower depending on your calorie needs.

Ingredients: Protein blend (whey protein isolate, calcium caseinate), vitamin and mineral mix (potassium gluconate, trisodium phosphate, potassium citrate, magnesium oxide, tricalcium phosphate, ascorbic acid, ferrous fumarate, vitamin E as acetate, niacinamide, copper gluconate, zinc oxide, calcium d-pantothenate, manganese sulfate, pyridoxine HCl, riboflavin, thiamin mononitrate, vitamin A as palmitate, chromium chloride, folic acid, d-biotin, potassium iodide, sodium molybdate, sodium selenite, phytonadione as vitamin K1, cholecalciferol as vitamin D3, cyanocobalamin as vitamin B12), isomalto-oligosaccharide, high oleic sunflower oil, gum arabic, glucomannan (konjac flour), natural flavors, xanthan gum, mono- and diglycerides, salt, sunflower lecithin, flaxseed, canola oil, tocopherols, yogurt powder (milk ingredients, lactic acid, citric acid, bacterial culture), stevia extract (Rebaudioside A).

Contains milk. Manufactured in a facility that processes soy, egg, wheat, peanuts and tree nuts.

DKM826

Proti VLC smoothies provide an all natural blend of protein, fiber and healthy fats to serve as your base for creating great tasting smoothies. Choose to blend with our assortment of flavor packs, or blend with fresh ingredients for a smoothie that's all your own.

EXCELLENT SOURCE OF PROTEIN, LOW FAT, LOW CHOLESTEROL, SUGAR-FREE, SOURCE OF FIBER.

CASE PACK OUT: 24 display boxes per case and 7 packets per display box

SHELF LIFE: 36 months

DIRECTIONS: Add 8 fl. oz of cold water to a shaker bottle or blender, add contents of base packet to cold water. Add your choice of flavor packet or fresh ingredients and shake or blend until smooth

Proti-VLC

blueberry flavor pack

Nutrition Facts

Serving Size 1 packet (9 g)
Servings Per Container 7

Amount/Serving

Calories 50 Calories from Fat 35

% Daily Value*

Total Fat 4g 6%

Saturated Fat 3.5g 18%

Trans Fat 0g

Cholesterol 0mg 0%

Sodium 5mg 1%

Potassium 95mg 3%

Total Carbohydrate 3g 1%

Dietary Fiber 0g 0%

Sugars 1g

Protein 0g

Vitamin A 0 % • Vitamin C 0 %

Calcium 25 % • Iron 0 %

* Percent Daily Values are based on a 2,000 calorie diet. Your daily values may be higher or lower depending on your calorie needs.

Ingredients: Coconut oil, dried blueberry powder, maltodextrin, tricalcium phosphate, tartaric acid, natural flavors, citric acid, sodium caseinate, mono and diglycerides, monk fruit extract, tocopherols, stevia extract (Rebaudioside A), sodium silico aluminate.

Contains milk. Manufactured in a facility that processes egg, soy, wheat, peanuts and tree nuts.

DKI630 - PD00129V01



Blend flavor packs with Proti VLC Smoothie Base for a delicious, all-natural smoothie.

OTHER AVAILABLE FLAVORS: vanilla bean, California dreaming strawberry, chocolate indulgence, orange creamsicle, piña colada escape.

CASE PACK OUT: 24 display boxes per case and 7 packets per display box

SHELF LIFE: 36 months

DIRECTIONS: Add 8 fl. oz of cold water to a shaker bottle or blender, add contents of smoothie base packet to cold water, add flavor packet and shake or blend until smooth

Proti-VLC

chocolate indulgence flavor pack

Nutrition Facts

Serving Size 1 packet (11g)
Servings Per Container 7

Amount/Serving

Calories 50 Calories from Fat 40

% Daily Value*

Total Fat 4.5g 7%

Saturated Fat 4.5g 23%

Trans Fat 0g

Cholesterol 0mg 0%

Sodium 0mg 0%

Potassium 70mg 2%

Total Carbohydrate 5g 2%

Dietary Fiber 0g 0%

Sugars 0g

Protein 0g

Vitamin A 0% • Vitamin C 0%

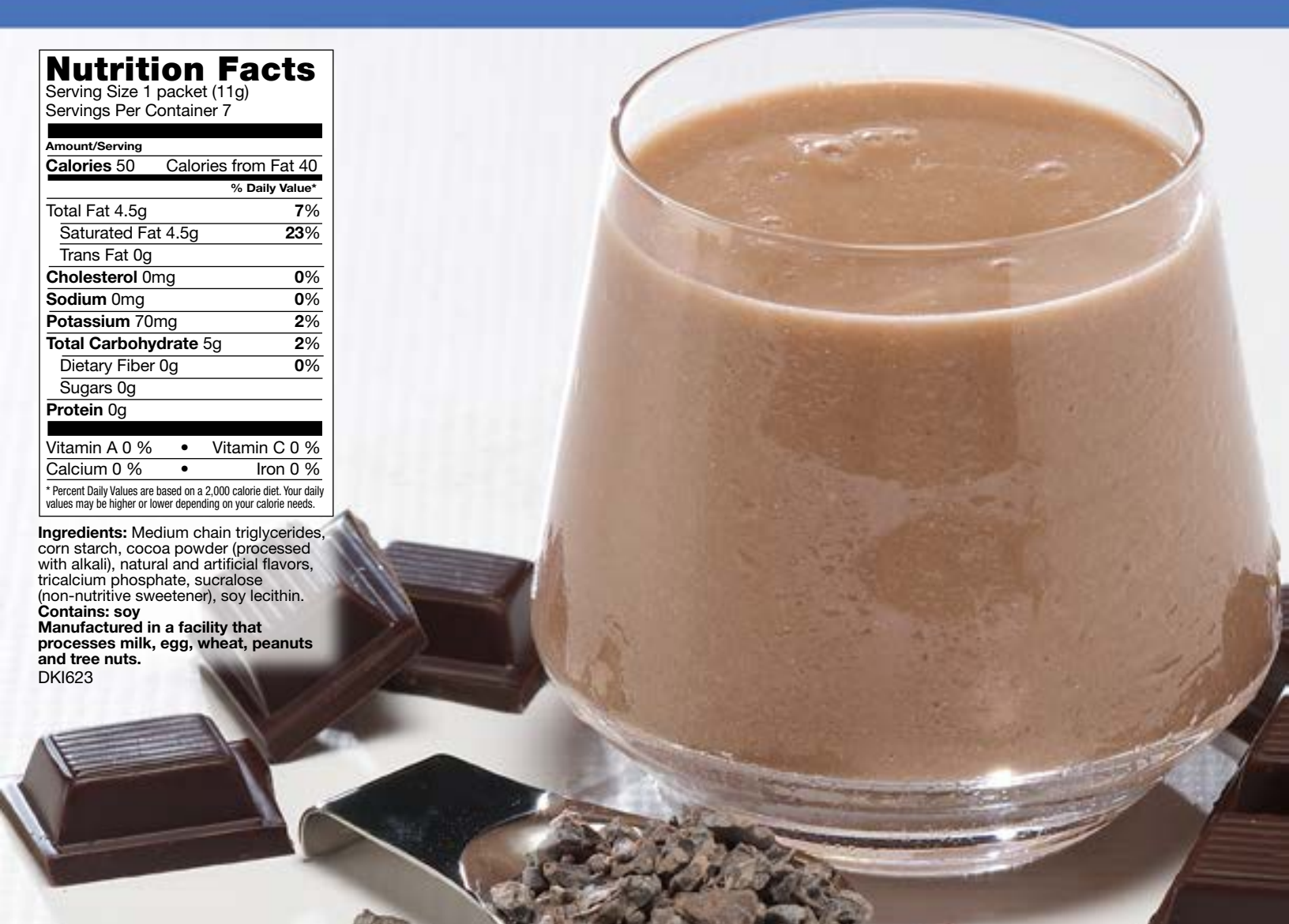
Calcium 0% • Iron 0%

* Percent Daily Values are based on a 2,000 calorie diet. Your daily values may be higher or lower depending on your calorie needs.

Ingredients: Medium chain triglycerides, corn starch, cocoa powder (processed with alkali), natural and artificial flavors, tricalcium phosphate, sucralose (non-nutritive sweetener), soy lecithin.

Contains: soy
Manufactured in a facility that processes milk, egg, wheat, peanuts and tree nuts.

DKI623



Blend flavor packs with Proti VLC Smoothie Base for a delicious, all-natural smoothie.

OTHER AVAILABLE FLAVORS: vanilla bean, blueberry delight, California dreaming strawberry, orange creamsicle, piña colada escape.

CASE PACK OUT: 24 display boxes per case and 7 packets per display box

SHELF LIFE: 36 months

DIRECTIONS: Add 8 fl. oz of cold water to a shaker bottle or blender, add contents of smoothie base packet to cold water, add flavor packet and shake or blend until smooth

Proti-VLC

orange creamsicle flavor pack

Nutrition Facts	
Serving Size 1 packet (8 g)	
Servings Per Container 7	
Amount/Serving	
Calories 50	Calories from Fat 40
% Daily Value*	
Total Fat 4.5g	7%
Saturated Fat 4g	20%
Trans Fat 0g	
Cholesterol 0mg	0%
Sodium 10mg	1%
Potassium 0mg	0%
Total Carbohydrate 3g	1%
Dietary Fiber 0g	0%
Sugars 0g	
Protein 0g	
Vitamin A 30 %	• Vitamin C 0 %
Calcium 0 %	• Iron 0 %

* Percent Daily Values are based on a 2,000 calorie diet. Your daily values may be higher or lower depending on your calorie needs.

Ingredients: Coconut oil, maltodextrin, natural flavors, citric acid, sodium caseinate, tricalcium phosphate, beta-carotene (color), mono and diglycerides, monk fruit extract, tocopherols, beet juice color, sodium silico aluminate, stevia extract (Rebadioside A).

Contains milk. Manufactured in a facility that processes egg, soy, wheat, peanuts and tree nuts.
DKI633 - PD001300V01

Blend flavor packs with Proti VLC Smoothie Base for a delicious, all-natural smoothie.

OTHER AVAILABLE FLAVORS: vanilla bean, blueberry delight, California dreaming strawberry, chocolate indulgence, piña colada escape.

CASE PACK OUT: 24 display boxes per case and 7 packets per display box

SHELF LIFE: 36 months

DIRECTIONS: Add 8 fl. oz of cold water to a shaker bottle or blender, add contents of smoothie base packet to cold water, add flavor packet and shake or blend until smooth

Proti-VLC

piña colada escape flavor pack

Nutrition Facts

Serving Size 1 packet (9 g)
Servings Per Container 7

Amount/Serving

Calories 50 Calories from Fat 35

% Daily Value*

Total Fat 3.5g 5%

Saturated Fat 3g 15%

Trans Fat 0g

Cholesterol 0mg 0%

Sodium 5mg 1%

Potassium 15mg 1%

Total Carbohydrate 4g 1%

Dietary Fiber 0g 0%

Sugars 2g

Protein 0g

Vitamin A 0 % • Vitamin C 0 %

Calcium 15 % • Iron 0 %

* Percent Daily Values are based on a 2,000 calorie diet. Your daily values may be higher or lower depending on your calorie needs

Ingredients: Coconut oil, natural flavors, dehydrated banana, maltodextrin, dried pineapple powder, tricalcium phosphate, sodium caseinate, citric acid, mono and diglycerides, monk fruit extract, tocopherols, stevia extract (Rebaudioside A), sodium silico aluminate.

Contains milk and coconut. Manufactured in a facility that processes egg, soy, wheat, peanuts and tree nuts.

DKI634 - PD001301V01

Blend flavor packs with Proti VLC Smoothie Base for a delicious, all-natural smoothie.

OTHER AVAILABLE FLAVORS: vanilla bean, blueberry delight, California dreaming strawberry, chocolate indulgence, orange creamsicle

CASE PACK OUT: 24 display boxes per case and 7 packets per display box

SHELF LIFE: 36 months

DIRECTIONS: Add 8 fl. oz of cold water to a shaker bottle or blender, add contents of smoothie base packet to cold water, add flavor packet and shake or blend until smooth

Proti-VLC

vanilla bean flavor pack

Nutrition Facts

Serving Size 1 packet (10g)
Servings Per Container 7

Amount/Serving	
Calories 50	Calories from Fat 35
% Daily Value*	
Total Fat 4g	6%
Saturated Fat 4g	20%
Trans Fat 0g	
Cholesterol 0mg	0%
Sodium 0mg	0%
Potassium 0mg	0%
Total Carbohydrate 5g	2%
Dietary Fiber 0g	0%
Sugars 1g	
Protein 0g	
Vitamin A 0 %	• Vitamin C 0 %
Calcium 0 %	• Iron 0 %

* Percent Daily Values are based on a 2,000 calorie diet. Your daily values may be higher or lower depending on your calorie needs.

Ingredients: Ingredients: Medium chain triglycerides, corn starch, natural and artificial flavors, maltodextrin, tricalcium phosphate, sucralose (non-nutritive sweetener), betacarotene (color).

Manufactured in a facility that processes milk, egg, soy, wheat, peanuts and tree nuts.

DKI610



Blend flavor packs with Proti VLC Smoothie Base for a delicious, all-natural smoothie.

OTHER AVAILABLE FLAVORS: vanilla bean, blueberry delight, California dreaming strawberry, chocolate indulgence, orange creamsicle, piña colada escape.

CASE PACK OUT: 24 display boxes per case and 7 packets per display box

SHELF LIFE: 36 months

DIRECTIONS: Add 8 fl. oz of cold water to a shaker bottle or blender, add contents of smoothie base packet to cold water, add flavor packet and shake or blend until smooth

Proti-VLC

strawberry shortcake bar

Nutrition Facts

Serving Size 1 bar (45g)
Servings Per Container 7

Amount/Serving	
Calories 160	Calories from Fat 60
% Daily Value*	
Total Fat 7g	11%
Saturated Fat 4g	20%
Trans Fat 0g	
Cholesterol 5mg	2%
Sodium 140mg	6%
Potassium 55mg	2%
Total Carbohydrate 17g	6%
Dietary Fiber 12g	48%
Sugars 2g	
Protein 15g	30%
Vitamin A	0%
Vitamin C	0%
Calcium	0%
Iron	0%

* Percent Daily Values are based on a 2,000 calorie diet. Your daily values may be higher or lower depending on your calorie needs.

Ingredients: Protein blend (soy protein isolate, whey protein isolate, acid casein, milk protein concentrate, whey protein concentrate), polydextrose, isomalto-oligosaccharide, vegetable oil (palm kernel oil, palm oil, shea oil), hydrolyzed gelatin, glycerin, cocoa butter, high oleic sunflower oil, tapioca starch, dehydrated fruit (raspberry, strawberry), natural and artificial flavors, soy lecithin, yogurt powder (cultured non-fat milk solids), cranberry juice concentrate powder, citric acid, skim milk powder, salt, calcium carbonate, beet red color, malic acid, monoglycerides, sucralose & acesulfame-potassium (non-nutritive sweeteners).

Contains: milk, soy, egg, peanuts and tree nuts (almonds).

BRD339V01

Proti VLC bars offer the great taste and the 15g of protein that our proti bars are famous for, but with lower net carbs and no gluten!

EXCELLENT SOURCE OF PROTEIN, GLUTEN-FREE, 5g NET CARBS

OTHER AVAILABLE FLAVORS: chocolate crisp, almond coconut, peanut batter nougat, chocolate chip, zesty lemon crisp, fluffy vanilla crisp, salted toffee pretzel

CASE PACK OUT: 24 display boxes per case and 7 packets per display box

SHELF LIFE: 13 months

Proti-VLC

chocolate crisp bar

Nutrition Facts

Serving Size 1 bar (45g)
Servings Per Container 7

Amount/Serving

Calories 160 Calories from Fat 60

% Daily Value*

Total Fat 7g	11%
Saturated Fat 4.5g	23%
Trans Fat 0g	
Cholesterol 5mg	2%
Sodium 130mg	5%
Potassium 160mg	5%
Total Carbohydrate 17g	6%
Dietary Fiber 12g	48%
Sugars 1g	
Protein 15g	30%
Vitamin A	0%
Vitamin C	0%
Calcium	6%
Iron	0%

* Percent Daily Values are based on a 2,000 calorie diet. Your daily values may be higher or lower depending on your calorie needs.

Ingredients: Protein blend (soy protein isolate, whey protein isolate, milk protein concentrate, acid casein, whey protein concentrate), polydextrose, isomalto-oligosaccharide, vegetable oil (palm kernel oil, palm oil, shea oil), hydrolyzed gelatin, glycerin, cocoa powder (processed with alkali), cocoa butter, high oleic sunflower oil, tapioca starch, soy lecithin, natural and artificial flavors, salt, calcium carbonate, monoglycerides, sucralose & acesulfame-potassium (non-nutritive sweeteners). **Contains: milk, soy, egg, peanuts and tree nuts (almonds).**
BRD338V01

Proti VLC bars offer the great taste and the 15g of protein that our proti bars are famous for, but with lower net carbs and no gluten!

EXCELLENT SOURCE OF PROTEIN, GLUTEN-FREE, 5g NET CARBS

OTHER AVAILABLE FLAVORS: strawberry shortcake, almond coconut, peanut batter nougat, chocolate chip, zesty lemon crisp, fluffy vanilla crisp, salted toffee pretzel

CASE PACK OUT: 24 display boxes per case and 7 packets per display box

SHELF LIFE: 15 months

Proti-VLC

almond coconut bar

Nutrition Facts

Serving Size 1 bar (49g)

Servings Per Container 7

Amount/Serving

Calories 160 Calories from Fat 60

% Daily Value*

Total Fat 7g **11%**

Saturated Fat 4.5g **23%**

Trans Fat 0g

Cholesterol 5mg **2%**

Sodium 120mg **5%**

Potassium 100mg **3%**

Total Carbohydrate 17g **6%**

Dietary Fiber 12g **48%**

Sugars 4g

Protein 15g **30%**

Vitamin A 0%

Vitamin C 0%

Calcium 6%

Iron 0%

* Percent Daily Values are based on a 2,000 calorie diet. Your daily values may be higher or lower depending on your calorie needs.

Ingredients: Protein blend (whey protein isolate, milk protein isolate), isomaltoligosaccharide, maltodextrin, invert sugar, coconut oil, natural flavors, almonds, cocoa butter, almond butter, coconut flakes, sea salt, sunflower lecithin, monk fruit extract, xanthan gum, canola oil, tocopherols. **Contains: milk, soy, egg, peanuts and tree nuts (almonds and coconut).**
BRD356V01

Proti VLC bars offer the great taste and the 15g of protein that our proti bars are famous for, but with lower net carbs and no gluten!

EXCELLENT SOURCE OF PROTEIN, GLUTEN-FREE, 5g NET CARBS, NO ADDED SUGAR ALCOHOLS, NO ARTIFICIAL SWEETENERS, NO ARTIFICIAL FLAVORS

OTHER AVAILABLE FLAVORS: strawberry shortcake, chocolate crisp, peanut batter nougat, chocolate chip, zesty lemon crisp, fluffy vanilla crisp, salted toffee pretzel

CASE PACK OUT: 24 display boxes per case and 7 packets per display box

SHELF LIFE: 13 months

Proti-VLC

peanut batter bar

Nutrition Facts

Serving Size 1 bar (49g)
Servings Per Container 7

Amount/Serving

Calories 160 Calories from Fat 60

% Daily Value*

Total Fat 7g	11%
Saturated Fat 1.5g	8%
Trans Fat 0g	
Cholesterol 5mg	2%
Sodium 170mg	7%
Potassium 150mg	4%
Total Carbohydrate 17g	6%
Dietary Fiber 12g	48%
Sugars 4g	
Protein 15g	30%
Vitamin A	0%
Vitamin C	0%
Calcium	6%
Iron	0%

* Percent Daily Values are based on a 2,000 calorie diet. Your daily values may be higher or lower depending on your calorie needs.

Ingredients: Protein blend (whey protein isolate, milk protein isolate), isomalto-oligosaccharide, maltodextrin, peanuts, invert sugar, natural flavors, peanut oil, partially defatted peanut flour, sea salt, coconut oil, cocoa butter, sunflower lecithin, monk fruit extract, xanthan gum, canola oil, tocopherols.

Contains: milk, soy, egg, peanuts and tree nuts (almonds).

BRD358V01

Proti VLC bars offer the great taste and the 15g of protein that our proti bars are famous for, but with lower net carbs and no gluten!

EXCELLENT SOURCE OF PROTEIN, GLUTEN-FREE, 5g NET CARBS, NO ADDED SUGAR ALCOHOLS, NO ARTIFICIAL SWEETENERS, NO ARTIFICIAL FLAVORS

OTHER AVAILABLE FLAVORS: strawberry shortcake, chocolate crisp, almond coconut, chocolate chip, zesty lemon crisp, fluffy vanilla crisp, salted toffee pretzel

CASE PACK OUT: 24 display boxes per case and 7 packets per display box

SHELF LIFE: 13 months

Proti-VLC

chocolate chip bar

Nutrition Facts

Serving Size 1 bar (49g)
Servings Per Container 7

Amount/Serving	
Calories 160	Calories from Fat 60
% Daily Value*	
Total Fat 7g	11%
Saturated Fat 5g	25%
Trans Fat 0g	
Cholesterol 5mg	2%
Sodium 120mg	5%
Potassium 110mg	3%
Total Carbohydrate 17g	6%
Dietary Fiber 12g	48%
Sugars 4g	
Protein 15g	30%
Vitamin A	0%
Vitamin C	0%
Calcium	6%
Iron	0%

* Percent Daily Values are based on a 2,000 calorie diet. Your daily values may be higher or lower depending on your calorie needs.

Ingredients: Protein blend (whey protein isolate, milk protein isolate), isomalto-oligosaccharide, maltodextrin, invert sugar, coconut oil, natural flavors, chocolate liquor, almonds, cocoa butter, sea salt, cocoa powder (processed with alkali), sunflower lecithin, monk fruit extract, color (annatto, turmeric), xanthan gum, canola oil, tocopherols. **Contains: milk, soy, egg, peanuts and tree nuts (almonds).**
BRD357V01



Proti VLC bars offer the great taste and the 15g of protein that our proti bars are famous for, but with lower net carbs and no gluten!

EXCELLENT SOURCE OF PROTEIN, GLUTEN-FREE, 5g NET CARBS, NO ADDED SUGAR ALCOHOLS, NO ARTIFICIAL SWEETENERS, NO ARTIFICIAL FLAVORS

OTHER AVAILABLE FLAVORS: strawberry shortcake, chocolate crisp, almond coconut, peanut batter nougat, zesty lemon crisp, fluffy vanilla crisp, salted toffee pretzel

CASE PACK OUT: 24 display boxes per case and 7 bars per display box

SHELF LIFE: 13 months

Proti-VLC

fluffy vanilla crisp bar

Nutrition Facts

Serving Size 1 bar (44g)
Servings Per Container 7

Amount/Serving	
Calories 160	Calories from Fat 60
% Daily Value*	
Total Fat 7g	11%
Saturated Fat 5g	25%
Trans Fat 0g	
Cholesterol 0mg	0%
Sodium 180mg	8%
Potassium 85mg	2%
Total Carbohydrate 18g	6%
Dietary Fiber 10g	40%
Sugars 3g	
Protein 15g	30%
Vitamin A	0%
Vitamin C	0%
Calcium	0%
Iron	0%

* Percent Daily Values are based on a 2,000 calorie diet. Your daily values may be higher or lower depending on your calorie needs.

Ingredients: Protein blend (soy protein isolate, milk protein concentrate, whey protein concentrate, whey protein isolate, dried egg albumen), isomaltooligosaccharide, vegetable oil (palm kernel oil, palm oil, shea oil), polydextrose, tapioca starch, glycerin, invert sugar, rice crisps (brown rice, rice syrup, salt), water, yogurt powder (cultured non-fat milk solids), natural and artificial flavors (contains **peanuts** and **almonds**), calcium carbonate, skim milk powder, agar, salt, soy lecithin, sucralose (non-nutritive sweetener), tocopherols.
BRF100



Proti VLC bars offer the great taste and the 15g of protein that our proti bars are famous for, but with lower net carbs and no gluten!

EXCELLENT SOURCE OF PROTEIN, GLUTEN-FREE, 5g NET CARBS

OTHER AVAILABLE FLAVORS: strawberry shortcake, chocolate crisp, almond coconut, peanut batter nougat, chocolate chip, zesty lemon crisp, salted toffee pretzel

CASE PACK OUT: 24 display boxes per case and 7 packets per display box

SHELF LIFE: 13 months

Proti-VLC

zesty lemon crisp bar

Nutrition Facts

Serving Size 1 bar (44g)
Servings Per Container 7

Amount/Serving	
Calories 160	Calories from Fat 60
% Daily Value*	
Total Fat 7g	11%
Saturated Fat 4.5g	23%
Trans Fat 0g	
Cholesterol 0mg	0%
Sodium 140mg	6%
Potassium 50mg	1%
Total Carbohydrate 16g	5%
Dietary Fiber 11g	44%
Sugars 1g	
Protein 15g	30%
Vitamin A	0%
Vitamin C	0%
Calcium	0%
Iron	0%

* Percent Daily Values are based on a 2,000 calorie diet. Your daily values may be higher or lower depending on your calorie needs.

Ingredients: Protein blend (soy protein isolate, whey protein isolate, acid casein, milk protein concentrate, whey protein concentrate), polydextrose, isomaltooligosaccharide, vegetable oil (palm kernel oil, palm oil, shea oil), hydrolyzed gelatin, glycerin, high oleic sunflower oil, tapioca starch, natural and artificial flavors (egg, peanuts, almonds), soy lecithin, yogurt powder (cultured non-fat milk solids), citric acid, skim milk powder, calcium carbonate, salt, ascorbic acid, malic acid, sucralose & acesulfame-potassium (non-nutritive sweeteners), monoglycerides, turmeric extract (color).

BRC368



Proti VLC bars offer the great taste and the 15g of protein that our proti bars are famous for, but with lower net carbs and no gluten!

EXCELLENT SOURCE OF PROTEIN, GLUTEN-FREE, 5g NET CARBS,

OTHER AVAILABLE FLAVORS: strawberry shortcake, chocolate crisp, almond coconut, peanut batter nougat, chocolate chip, fluffy vanilla crisp, salted toffee pretzel

CASE PACK OUT: 24 display boxes per case and 7 bars per display box

SHELF LIFE: 13 months

Proti-VLC

salted toffee pretzel bar

Nutrition Facts

Serving Size 1 bar (44g)
Servings Per Container 7

Amount/Serving	
Calories 160	Calories from Fat 60
% Daily Value*	
Total Fat 6g	9%
Saturated Fat 4.5g	23%
Trans Fat 0g	
Cholesterol 0mg	0%
Sodium 230mg	10%
Potassium 80mg	2%
Total Carbohydrate 18g	6%
Dietary Fiber 8g	32%
Sugars 4g	
Protein 15g	30%
Vitamin A	0%
Vitamin C	0%
Calcium	0%
Iron	0%

* Percent Daily Values are based on a 2,000 calorie diet. Your daily values may be higher or lower depending on your calorie needs.

Ingredients: Protein blend (soy protein isolate, milk protein concentrate, whey protein concentrate, whey protein isolate), isomalto-oligosaccharide, vegetable oil (palm kernel oil, palm oil, shea oil, sunflower oil), tapioca starch, polydextrose, glycerin, sugar, organic invert sugar, butter, water, corn starch, soy flour, natural and artificial flavors (peanuts), sesame seeds, yogurt powder (cultured non-fat milk solids), inulin, salt, dried egg-white, roasted almonds, calcium carbonate, milk ingredients (non-fat milk, milk fat, milk), pea fiber, agar, vanilla extract, rice syrup, cocoa butter, soy lecithin, sucralose (non-nutritive sweetener), xanthan gum, monocalcium phosphate, sodium bicarbonate, tocopherols, yeast, unsweetened chocolate, lactose, sodium hydroxide.

Manufactured in a facility that processes wheat.
BRF104 PD001401V01



Proti VLC bars offer the great taste and the 15g of protein that our proti bars are famous for, but with lower net carbs and no gluten!

EXCELLENT SOURCE OF PROTEIN, GLUTEN-FREE, 10g NET CARBS

OTHER AVAILABLE FLAVORS: strawberry shortcake, chocolate crisp, almond coconut, peanut batter nougat, chocolate chip, zesty lemon crisp, fluffy vanilla crisp

CASE PACK OUT: 24 display boxes per case and 7 packets per display box

SHELF LIFE: 13 months

Proti-VLC

Hot Base Mix

Nutrition Facts

Serving Size 1 packet (31g)
Servings Per Container 7

Amount/Serving

Calories 120 **Calories from Fat 30**

% Daily Value*

Total Fat 3.5g **5%**

Saturated Fat 3.5g **18%**

Trans Fat 0g

Cholesterol 0mg **0%**

Sodium 35mg **1%**

Potassium 600mg **17%**

Total Carbohydrate 5g **2%**

Dietary Fiber 3g **12%**

Sugars 1 g

Protein 18g **36%**

Vitamin A 20 % • Vitamin C 20 %

Calcium 50 % • Iron 20 %

Vitamin D 20 % • Vitamin E 20 %

Vitamin K 20 % • Thiamin 20 %

Riboflavin 20 % • Niacin 20 %

Vitamin B6 20 % • Folate 20 %

Vitamin B12 20 % • Biotin 20 %

Pantothenic acid 20 % • Phosphorus 20 %

Iodine 20 % • Magnesium 15 %

Zinc 20 % • Selenium 20 %

Copper 20 % • Manganese 20 %

Chromium 20 % • Molybdenum 20 %

* Percent Daily Values are based on a 2,000 calorie diet. Your daily values may be higher or lower depending on your calorie needs.

Ingredients: Milk protein isolate, medium chain triglycerides, isomalto-oligosaccharide, potassium chloride, glucose syrup, sodium caseinate, natural flavors, potassium citrate, vitamin and mineral mix (ascorbic acid, ferrous fumarate, vitamin E as acetate, niacinamide, copper gluconate, zinc oxide, calcium d-pantothenate, manganese sulfate, pyridoxine HCL, riboflavin, thiamin mononitrate, vitamin A as palmitate, chromium chloride, folic acid, d-biotin, potassium iodide, sodium molybdate, sodium selenite, phytonadione as vitamin K1, cholecalciferol as vitamin D3, cyanocobalamin as vitamin B12), guar gum, sodium alginate, xanthan gum, mono and diglycerides, magnesium oxide, silicon dioxide, tocopherols.

Manufactured in a facility that processes soy, egg, wheat, peanuts and tree nuts.

HBM100

Proti VLC Hot Base provides an all natural blend of protein, fiber and healthy fats to serve as your base for creating great tasting hot meals and snacks. Choose to blend with our assortment of flavor packs, or blend with recipes calling for fresh ingredients.

EXCELLENT SOURCE OF PROTEIN, HIGH FIBER, FULLY FORTIFIED

CASE PACK OUT: 24 display boxes per case and 7 packets per display box

SHELF LIFE: 24 months

Proti-VLC

Hungarian Mushroom Soup Flavor Pack

Nutrition Facts	
Serving Size 1 packet (12g)	
Servings Per Container 7	
Amount/Serving	
Calories 40	Calories from Fat 15
% Daily Value*	
Total Fat 1.5g	2%
Saturated Fat 1g	5%
Trans Fat 0g	
Cholesterol 0mg	0%
Sodium 570mg	24%
Potassium 180mg	5%
Total Carbohydrate 5g	2%
Dietary Fiber 1g	4%
Sugars 1g	
Protein 2g	
Vitamin A	10 %
Vitamin C	0 %
Calcium	8 %
Iron	0 %

Ingredients: Dehydrated vegetables (mushroom, onion, garlic), Hungarian paprika, mushroom juice powder, salt, medium chain triglycerides, yeast extract, spices, natural flavors, tricalcium phosphate, glucose syrup, sodium caseinate (**milk**), caramel color, mono and diglycerides, tocopherols.
Manufactured in a facility that processes soy, egg, wheat, peanuts and tree nuts.
SPI102V01

Blend this delicious Flavor Pack with our Hot Base Mix for a hot and satisfying bowl of soup.

GLUTEN-FREE, CONTAINS 1 SERVING OF VEGETABLES IN EVERY BOWL

OTHER AVAILABLE FLAVORS: country chicken and vegetable, farmhouse cheddar and broccoli, Thai tomato

CASE PACK OUT: 12 display boxes per case and 7 packets per display box

SHELF LIFE: 24 months

Proti-VLC

Country Chicken & Vegetable Soup Flavor Pack

Nutrition Facts

Serving Size 1 packet (13 g)
Servings Per Container 7

Amount/Serving	
Calories 40	Calories from Fat 10
% Daily Value*	
Total Fat 1g	2%
Saturated Fat 1g	5%
Trans Fat 0g	
Cholesterol 0mg	0%
Sodium 580mg	24%
Potassium 135mg	4%
Total Carbohydrate 6g	2%
Dietary Fiber 2g	8%
Sugars 1g	
Protein 3g	
Vitamin A	10 %
Vitamin C	10 %
Calcium	8 %
Iron	0 %

* Percent Daily Values are based on a 2,000 calorie diet. Your daily values may be higher or lower depending on your calorie needs.

Ingredients: Dehydrated vegetables (carrot, broccoli, kale, onion, garlic, celery), natural flavors, yeast extract, salt, isomalto-oligosaccharide, medium chain triglycerides, spices, tricalcium phosphate, glucose syrup, sodium caseinate (milk), mono and diglycerides, tocopherols.

Manufactured in a facility that processes soy, egg, wheat, peanuts and tree nuts.
SPI100V01



Blend this delicious Flavor Pack with our Hot Base Mix for a hot and satisfying bowl of soup.

GLUTEN-FREE, CONTAINS 1 SERVING OF VEGETABLES IN EVERY BOWL

OTHER AVAILABLE FLAVORS: Hungarian mushroom, farmhouse cheddar and broccoli, Thai tomato

CASE PACK OUT: 12 display boxes per case and 7 packets per display box

SHELF LIFE: 24 months

Proti-VLC

Farmhouse Cheddar & Broccoli Soup Flavor Pack

Nutrition Facts	
Serving Size 1 packet (13g)	
Servings Per Container 7	
Amount/Serving	
Calories 40	Calories from Fat 10
% Daily Value*	
Total Fat 1g	2%
Saturated Fat 1g	5%
Trans Fat 0g	
Cholesterol 0mg	0%
Sodium 710mg	30%
Potassium 140mg	4%
Total Carbohydrate 4g	2%
Dietary Fiber 2g	8%
Sugars 1g	
Protein 4g	
Vitamin A	70 %
Vitamin C	15 %
Calcium	0 %
Iron	0 %

Ingredients: Dehydrated vegetables (broccoli, onion, garlic, celery), yeast extract, natural flavors, salt, medium chain triglycerides, beta-carotene (color), spices, glucose syrup, sodium caseinate (**milk**), mono and diglycerides, tocopherols.
Manufactured in a facility that processes soy, egg, wheat, peanuts and tree nuts.
SPI101V01

Blend this delicious Flavor Pack with our Hot Base Mix for a hot and satisfying bowl of soup.

GLUTEN-FREE, CONTAINS 1 SERVING OF VEGETABLES IN EVERY BOWL

OTHER AVAILABLE FLAVORS: Hungarian mushroom, country chicken and vegetable, Thai tomato

CASE PACK OUT: 12 display boxes per case and 7 packets per display box

SHELF LIFE: 24 months

Proti-VLC

Thai Tomato Soup Flavor Pack

Nutrition Facts

Serving Size 1 packet (13g)
Servings Per Container 7

Amount/Serving	
Calories 40	Calories from Fat 5
% Daily Value*	
Total Fat 0.5g	1%
Saturated Fat 0g	0%
Trans Fat 0g	
Cholesterol 0mg	0%
Sodium 580mg	24%
Potassium 85mg	2%
Total Carbohydrate 7g	2%
Dietary Fiber 1g	4%
Sugars 2g	
Protein 2g	
Vitamin A	0%
Vitamin C	15%
Calcium	0%
Iron	0%

* Percent Daily Values are based on a 2,000 calorie diet. Your daily values may be higher or lower depending on your calorie needs.

Ingredients: Dehydrated vegetables (tomato, onion, red bell pepper, garlic), salt, yeast extract, lime juice powder, spices, color (lycopene extract, caramel, turmeric), natural flavors, **coconut** milk, citric acid, maltodextrin, sodium caseinate (**milk**). **Manufactured in a facility that processes soy, egg, wheat, peanuts and tree nuts.**
SPI103V01

Blend this delicious Flavor Pack with our Hot Base Mix for a hot and satisfying bowl of soup.

GLUTEN-FREE, CONTAINS 1 SERVING OF VEGETABLES IN EVERY BOWL

OTHER AVAILABLE FLAVORS: Hungarian mushroom, country chicken and vegetable, farmhouse cheddar and broccoli

CASE PACK OUT: 12 display boxes per case and 7 packets per display box

SHELF LIFE: 24 months

Proti-VLC

Gluten Free Pasta

Nutrition Facts

Serving Size 1 packet (31g)
Servings Per Container 7

Amount/Serving	
Calories 110	Calories from Fat 15
% Daily Value*	
Total Fat 2g	3%
Saturated Fat 0.5g	3%
Trans Fat 0g	
Cholesterol 0mg	0%
Sodium 350mg	15%
Potassium 105mg	3%
Total Carbohydrate 6g	2%
Dietary Fiber 3g	12%
Sugars 0g	
Protein 20g	31%
Vitamin A	0 %
Vitamin C	0 %
Calcium	0 %
Iron	20 %

* Percent Daily Values are based on a 2,000 calorie diet. Your daily values may be higher or lower depending on your calorie needs.

Ingredients: Protein blend (pea protein isolate, dried egg albumen), water, lentil flour, gum arabic, monoglycerides, bamboo fiber.

Manufactured in a facility that processes milk, soy, wheat, peanuts and tree nuts.

BKN801 - PD001320V01



At last, a pasta that isn't out of bounds for dieters! And in case that's not good enough news, our fettuccine is gluten free, high in iron and, with 20 g of protein per serving, it will fit perfectly into a high protein diet. Proti-VLC Pasta can be used with our range of Pasta Flavor Packs or with fresh ingredients to make an endless variety of tasty and nutritious pasta dishes.

GLUTEN-FREE, HIGH PROTEIN

CASE PACK OUT: 12 display boxes per case and 7 packets per display box

SHELF LIFE: 18 months

DIRECTIONS:

STOVE TOP: Empty contents of packet into a pot of boiling water. Cook for 5 minutes (al dente) or until desired texture.

MICROWAVE: Empty the contents of the pasta pouch into a microwave-safe bowl. Add 6 oz (3/4 cup) of water to the bowl and place in the microwave for 5-7 minutes (or until the pasta is cooked as desired).

Drain well and serve with your favorite dishes or combine with one of our Pasta Flavor Packs for a quick meal.

Proti-VLC

Asian Inspired Pasta Sauce Flavor Pack

Nutrition Facts

Serving Size 1 packet (14g)
Servings Per Container 7

Amount/Serving

Calories 50 Calories from Fat 25

% Daily Value*

Total Fat 2.5g 4%

Saturated Fat 0.5g 3%

Trans Fat 0g

Cholesterol 0mg 0%

Sodium 200mg 8%

Potassium 520mg 15%

Total Carbohydrate 5g 2%

Dietary Fiber <1g 4%

Sugars 0g

Protein 1g

Vitamin A 20% • Vitamin C 20%

Calcium 20% • Iron 20%

Vitamin D 20% • Vitamin E 20%

Vitamin K 20% • Thiamin 20%

Riboflavin 20% • Niacin 20%

Vitamin B6 20% • Folate 20%

Vitamin B12 20% • Biotin 20%

Pantothenate 20% • Phosphorus 8%

Iodine 20% • Magnesium 20%

Zinc 20% • Selenium 20%

Copper 20% • Manganese 20%

Chromium 20% • Molybdenum 20%

* Percent Daily Values are based on a 2,000 calorie diet. Your daily values may be higher or lower depending on your calorie needs:

Calories: 2,000 2,500

Total Fat Less than 65g 80g

Sat Fat Less than 20g 25g

Cholesterol Less than 300mg 300mg

Sodium Less than 2,400mg 2,400mg

Potassium 3,500mg 3,500mg

Total Carbohydrate 300g 375g

Dietary Fiber 25g 30g

Protein 50g 65g

Calories per gram:

Fat 9 • Carbohydrates 4 • Protein 4

Ingredients: Potassium gluconate, sunflower oil, maltodextrin, dehydrated vegetables (garlic, onion, red bell pepper), spices, yeast extract, sesame seeds, natural flavors, tricalcium phosphate, salt, citric acid, mono- and diglycerides, vitamin and mineral mix (ascorbic acid, ferrous fumarate, vitamin E as acetate, niacinamide, copper gluconate, zinc oxide, calcium d-pantothenate, manganese sulfate, pyridoxine HCL, riboflavin, thiamin mononitrate, vitamin A as palmitate, chromium chloride, folic acid, d-biotin, potassium iodide, sodium molybdate, sodium selenite, phytonadione as vitamin K1, cholecalciferol as vitamin D3, cyanocobalamin as vitamin B12), caramel color, guar gum, sodium alginate, xanthan gum, magnesium oxide, honey powder, sodium diacetate, tocopherols, silicon dioxide, sodium caseinate (milk), potassium chloride, sodium gluconate, spice extract.

Manufactured in a facility that processes egg, soy, peanuts and tree nuts.

M100 - PD001321V01

Prepare with our Proti VLC gluten-free fettuccine for a delicious pasta treat.

GLUTEN-FREE

OTHER AVAILABLE FLAVORS: garlic & herb, lemon & herb, Tex Mex, tomato parmesan

CASE PACK OUT: 24 display boxes per case and 7 packets per display box

SHELF LIFE: 18 months

DIRECTIONS: Empty the contents of the pasta pouch into a microwave-safe bowl. Add 6 oz (3/4 cup water) to the bowl and place in the microwave for 5-7 minutes (or until the pasta is cooked as desired). Empty the contents of the Flavor Pack into the bowl and stir with remaining water, about 3 tablespoons (add extra water if needed). Add back in microwave for another 30-45 seconds until done. Based on microwave variability, quantity of water and cooking time may be adjusted.

Proti-VLC

Garlic & Herb Pasta Sauce Flavor Pack

Nutrition Facts	
Serving Size 1 packet (14g)	
Servings Per Container 7	
Amount/Serving	
Calories 50	Calories from Fat 20
% Daily Value*	
Total Fat 2g	3%
Saturated Fat 1g	5%
Trans Fat 0g	
Cholesterol 5mg	2%
Sodium 210mg	9%
Potassium 520mg	15%
Total Carbohydrate 6g	3%
Dietary Fiber 3g	12%
Sugars 0g	
Protein 1g	
Vitamin A 20 %	Vitamin C 20 %
Calcium 20 %	Iron 20 %
Vitamin D 20%	Vitamin E 20%
Vitamin K 20%	Thiamin 20%
Riboflavin 20%	Niacin 20%
Vitamin B6 20%	Folate 20%
Vitamin B12 20%	Biotin 20%
Pantothenate 20%	Phosphorus 8%
Iodine 20%	Magnesium 20%
Zinc 20%	Selenium 20%
Copper 20%	Manganese 20%
Chromium 20%	Molybdenum 20%

* Percent Daily Values are based on a 2,000 calorie diet. Your daily values may be higher or lower depending on your calorie needs:

	Calories:	2,000	2,500
Total Fat	Less than	65g	80g
Sat Fat	Less than	20g	25g
Cholesterol	Less than	300mg	300mg
Sodium	Less than	2,400mg	2,400mg
Potassium		3,500mg	3,500mg
Total Carbohydrate		300g	375g
Dietary Fiber		25g	30g
Protein		50g	65g

Calories per gram:
Fat 9 • Carbohydrates 4 • Protein 4

Ingredients: Potassium gluconate, isomalt oligosaccharide, dehydrated vegetables (garlic, onion), cream cheese powder [cream cheese (cream, milk, salt, bacterial culture), sodium phosphate, sodium citrate, tocopherols, silicon dioxide], sunflower oil, maltodextrin, yeast extract, natural flavors, spices, tricalcium phosphate, salt, parsley, vitamin and mineral mix (ascorbic acid, ferrous fumarate, vitamin E as acetate, niacinamide, copper gluconate, zinc oxide, calcium d-pantothenate, manganese sulfate, pyridoxine HCL, riboflavin, thiamin mononitrate, vitamin A as palmitate, chromium chloride, folic acid, d-biotin, potassium iodide, sodium molybdate, sodium selenite, phytonadione as vitamin K1, cholecalciferol as vitamin D3, cyanocobalamin as vitamin B12), mono- and diglycerides, magnesium oxide, guar gum, sodium alginate, xanthan gum, silicon dioxide, tocopherols, sodium caseinate, potassium chloride, sodium gluconate.

Manufactured in a facility that processes egg, soy, peanuts and tree nuts.
MSM101 PD001322V01



Prepare with our Proti VLC gluten-free fettuccine for a delicious pasta treat.

GLUTEN-FREE

OTHER AVAILABLE FLAVORS: Asian Inspired, lemon & herb, Tex Mex, tomato parmesan

CASE PACK OUT: 24 display boxes per case and 7 packets per display box

SHELF LIFE: 18 months

DIRECTIONS: Empty the contents of the pasta pouch into a microwave-safe bowl. Add 6 oz (3/4 cup water) to the bowl and place in the microwave for 5-7 minutes (or until the pasta is cooked as desired). Empty the contents of the Flavor Pack into the bowl and stir with remaining water, about 3 tablespoons (add extra water if needed). Add back in microwave for another 30-45 seconds until done. Based on microwave variability, quantity of water and cooking time may be adjusted.

Proti-VLC

Lemon & Herb Pasta Sauce Flavor Pack

Nutrition Facts	
Serving Size 1 packet (15g)	
Servings Per Container 7	
Amount/Serving	
Calories 50	Calories from Fat 20
% Daily Value*	
Total Fat 2g	3%
Saturated Fat 1g	5%
Trans Fat 0g	
Cholesterol 0mg	0%
Sodium 260mg	11%
Potassium 500mg	14%
Total Carbohydrate 6g	2%
Dietary Fiber 2g	8%
Sugars 0g	
Protein 1g	
Vitamin A 20%	Vitamin C 20%
Calcium 20%	Iron 20%

Vitamin D 20%	Vitamin E 20%
Vitamin K 20%	Thiamin 20%
Riboflavin 20%	Niacin 20%
Vitamin B6 20%	Folate 20%
Vitamin B12 20%	Biotin 20%
Pantothenate 20%	Phosphorus 20%
Iodine 20%	Magnesium 20%
Zinc 20%	Selenium 20%
Copper 20%	Manganese 20%
Chromium 20%	Molybdenum 20%

* Percent Daily Values are based on a 2,000 calorie diet. Your daily values may be higher or lower depending on your calorie needs:

	Calories:	2,000	2,500
Total Fat	Less than	65g	80g
Sat Fat	Less than	20g	25g
Cholesterol	Less than	300mg	300mg
Sodium	Less than	2,400mg	2,400mg
Potassium		3,500mg	3,500mg
Total Carbohydrate		300g	375g
Dietary Fiber		25g	30g
Protein		50g	65g

Calories per gram:
Fat 9 • Carbohydrates 4 • Protein 4

Ingredients: Potassium gluconate, natural flavors, isomalto-oligosaccharide, maltodextrin, tricalcium phosphate, sunflower oil, coconut oil, protein blend (whey protein isolate (milk), sodium caseinate), yeast extract, salt, dehydrated vegetables (garlic, onion), capers, citric acid, vitamin and mineral mix (ascorbic acid, ferrous fumarate, vitamin E as acetate, niacinamide, copper gluconate, zinc oxide, calcium d-pantothenate, manganese sulfate, pyridoxine HCL, riboflavin, thiamin mononitrate, vitamin A as palmitate, chromium chloride, folic acid, d-biotin, potassium iodide, sodium molybdate, sodium selenite, phytanadione as vitamin K1, cholecalciferol as vitamin D3, cyanocobalamin as vitamin B12), mono- and diglycerides, magnesium oxide, guar gum, sodium alginate, xanthan gum, dill weed, silicon dioxide, spices, tocopherols, turmeric extract (color), potassium chloride, sodium gluconate, sodium silico aluminate.

Manufactured in a facility that processes egg, soy, peanuts and tree nuts.
MSM102 - PD001323V01



Prepare with our Proti VLC gluten-free fettuccine for a delicious pasta treat.

GLUTEN-FREE

OTHER AVAILABLE FLAVORS: Asian Inspired, garlic & herb, Tex Mex, tomato parmesan

CASE PACK OUT: 24 display boxes per case and 7 packets per display box

SHELF LIFE: 18 months

DIRECTIONS: Empty the contents of the pasta pouch into a microwave-safe bowl. Add 6 oz (3/4 cup water) to the bowl and place in the microwave for 5-7 minutes (or until the pasta is cooked as desired). Empty the contents of the Flavor Pack into the bowl and stir with remaining water, about 3 tablespoons (add extra water if needed). Add back in microwave for another 30-45 seconds until done. Based on microwave variability, quantity of water and cooking time may be adjusted.

Proti-VLC

Tex Mex Pasta Sauce Flavor Pack

Nutrition Facts	
Serving Size 1 packet (12g)	
Servings Per Container 7	
Amount/Serving	
Calories 50	Calories from Fat 25
% Daily Value*	
Total Fat 3g	5%
Saturated Fat 2g	10%
Trans Fat 0g	
Cholesterol 10mg	3%
Sodium 250mg	10%
Potassium 510mg	15%
Total Carbohydrate 3g	1%
Dietary Fiber <1g	4%
Sugars 1g	
Protein 1g	
Vitamin A 20%	Vitamin C 20%
Calcium 20%	Iron 20%
Vitamin D 20%	Vitamin E 20%
Vitamin K 20%	Thiamin 20%
Riboflavin 20%	Niacin 20%
Vitamin B6 20%	Folate 20%
Vitamin B12 20%	Biotin 20%
Pantothenate 20%	Phosphorus 10%
Iodine 20%	Magnesium 20%
Zinc 20%	Selenium 20%
Copper 20%	Manganese 20%
Chromium 20%	Molybdenum 20%

* Percent Daily Values are based on a 2,000 calorie diet. Your daily values may be higher or lower depending on your calorie needs:

	Calories:	2,000	2,500
Total Fat	Less than	65g	80g
Sat Fat	Less than	20g	25g
Cholesterol	Less than	300mg	300mg
Sodium	Less than	2,400mg	2,400mg
Potassium		3,500mg	3,500mg
Total Carbohydrate		300g	375g
Dietary Fiber		25g	30g
Protein		50g	65g

Calories per gram:
 Fat 9 • Carbohydrates 4 • Protein 4

Ingredients: Cream cheese powder [cream cheese (cream, milk, salt, bacterial culture), sodium phosphate, sodium citrate, tocopherols, silicon dioxide], potassium gluconate, natural flavors, dehydrated vegetables (red bell pepper, tomato, garlic, onion, jalapeno), spices, tricalcium phosphate, yeast extract, salt, vitamin and mineral mix (ascorbic acid, ferrous fumarate, vitamin E as acetate, niacinamide, copper gluconate, zinc oxide, calcium d-pantothenate, manganese sulfate, pyridoxine HCL, riboflavin, thiamin mononitrate, vitamin A as palmitate, chromium chloride, folic acid, d-biotin, potassium iodide, sodium molybdate, sodium selenite, phytonadione as vitamin K1, cholecalciferol as vitamin D3, cyanocobalamin as vitamin B12), guar gum, sodium alginate, xanthan gum, magnesium oxide, mono- and diglycerides, annatto extract (color), silicon dioxide, tocopherols.

Manufactured in a facility that processes egg, soy, peanuts and tree nuts.
MSM103 - PD001324V01



Prepare with our Proti VLC gluten-free fettuccine for a delicious pasta treat.

GLUTEN-FREE

OTHER AVAILABLE FLAVORS: Asian Inspired, garlic & herb, lemon & herb, tomato parmesan

CASE PACK OUT: 24 display boxes per case and 7 packets per display box

SHELF LIFE: 18 months

DIRECTIONS: Empty the contents of the pasta pouch into a microwave-safe bowl. Add 6 oz (3/4 cup water) to the bowl and place in the microwave for 5-7 minutes (or until the pasta is cooked as desired). Empty the contents of the Flavor Pack into the bowl and stir with remaining water, about 3 tablespoons (add extra water if needed). Add back in microwave for another 30-45 seconds until done. Based on microwave variability, quantity of water and cooking time may be adjusted.

Proti-VLC

Tomato Parmesan Pasta Sauce Flavor Pack

Nutrition Facts	
Serving Size 1 packet (15g)	
Servings Per Container 7	
Amount/Serving	
Calories 50	Calories from Fat 15
% Daily Value*	
Total Fat 1.5g	2%
Saturated Fat 1.5g	8%
Trans Fat 0g	
Cholesterol 0mg	0%
Sodium 190mg	8%
Potassium 510mg	15%
Total Carbohydrate 7g	2%
Dietary Fiber 3g	12%
Sugars 2g	
Protein 1g	
Vitamin A 20 %	Vitamin C 20 %
Calcium 20 %	Iron 20 %
Vitamin D 20%	Vitamin E 20%
Vitamin K 20%	Thiamin 20%
Riboflavin 20%	Niacin 20%
Vitamin B6 20%	Folate 20%
Vitamin B12 20%	Biotin 20%
Pantothenate 20%	Phosphorus 10%
Iodine 20%	Magnesium 20%
Zinc 20%	Selenium 20%
Copper 20%	Manganese 20%
Chromium 20%	Molybdenum 20%

* Percent Daily Values are based on a 2,000 calorie diet. Your daily values may be higher or lower depending on your calorie needs:

Calories:		
Calories:	2,000	2,500
Total Fat	Less than 65g	80g
Sat Fat	Less than 20g	25g
Cholesterol	Less than 300mg	300mg
Sodium	Less than 2,400mg	2,400mg
Potassium	3,500mg	3,500mg
Total Carbohydrate	300g	375g
Dietary Fiber	25g	30g
Protein	50g	65g

Calories per gram:
Fat 9 • Carbohydrates 4 • Protein 4

Ingredients: Dehydrated vegetables (tomato, garlic, onion), potassium gluconate, isomaltol-oligosaccharide, coconut oil, natural flavors, yeast extract, tricalcium phosphate, salt, maltodextrin, vitamin and mineral mix (ascorbic acid, ferrous fumarate, vitamin E as acetate, niacinamide, copper gluconate, zinc oxide, calcium d-pantothenate, manganese sulfate, pyridoxine HCL, riboflavin, thiamin mononitrate, vitamin A as palmitate, chromium chloride, folic acid, d-biotin, potassium iodide, sodium molybdate, sodium selenite, phytonadione as vitamin K1, cholecalciferol as vitamin D3, cyanocobalamin as vitamin B12), spices, mono- and diglycerides, magnesium oxide, guar gum, sodium alginate, xanthan gum, citric acid, sodium caseinate (milk), silicon dioxide, lycopene extract (color), potassium chloride, sodium gluconate, tocopherols, sodium silico aluminate.

Manufactured in a facility that processes egg, soy, peanuts and tree nuts.

MSM104 - PD001325V01



Prepare with our Proti VLC gluten-free fettuccine for a delicious pasta treat.

GLUTEN-FREE

OTHER AVAILABLE FLAVORS: Asian Inspired, garlic & herb, lemon & herb, Tex Mex

CASE PACK OUT: 24 display boxes per case and 7 packets per display box

SHELF LIFE: 18 months

DIRECTIONS: Empty the contents of the pasta pouch into a microwave-safe bowl. Add 6 oz (3/4 cup water) to the bowl and place in the microwave for 5-7 minutes (or until the pasta is cooked as desired). Empty the contents of the Flavor Pack into the bowl and stir with remaining water, about 3 tablespoons (add extra water if needed). Add back in microwave for another 30-45 seconds until done. Based on microwave variability, quantity of water and cooking time may be adjusted.